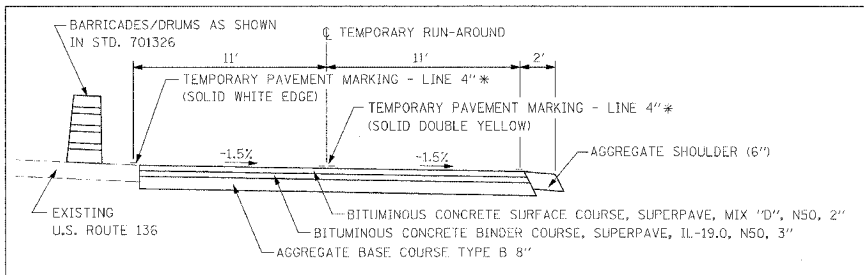
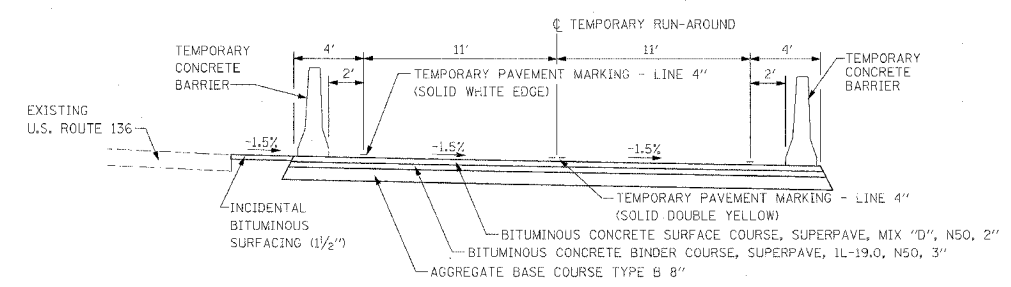


DATE	
BY	
REVISIONS	
NO.	DESCRIPTION
1	REVISED
2	REVISED
3	REVISED
4	REVISED
5	REVISED
6	REVISED
7	REVISED
8	REVISED
9	REVISED
10	REVISED

DATE	
BY	
REVISIONS	
NO.	DESCRIPTION
1	REVISED
2	REVISED
3	REVISED
4	REVISED
5	REVISED
6	REVISED
7	REVISED
8	REVISED
9	REVISED
10	REVISED



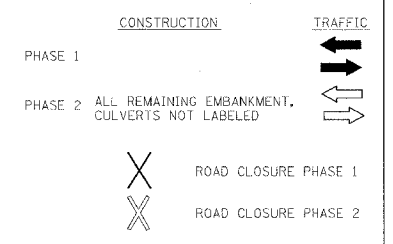
SECTION A-A STA. 214+08 TO STA. 219+33



SECTION B-B STA. 210+00 TO STA. 214+08

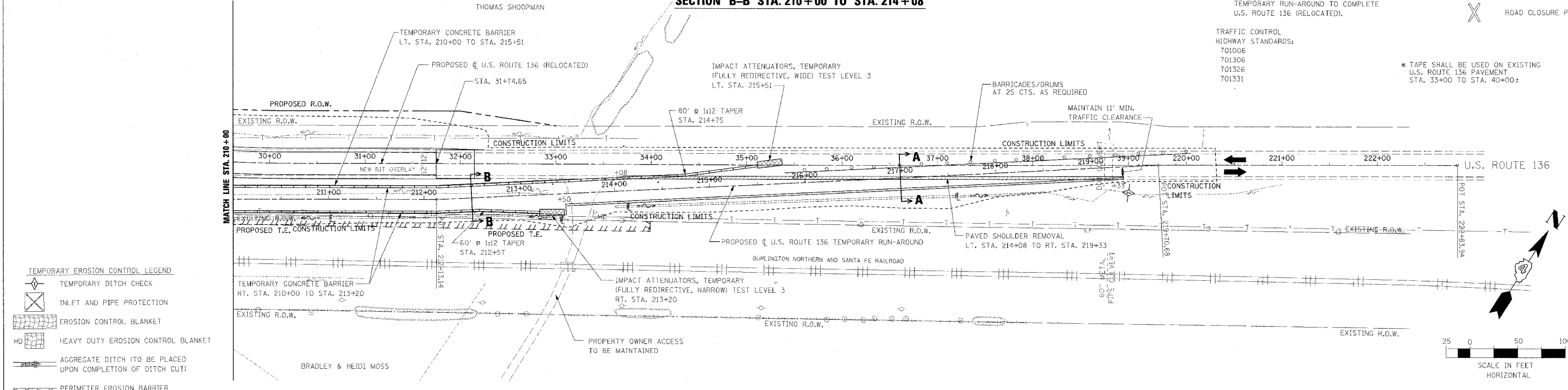
- CONSTRUCTION:**
1. CONSTRUCT U.S. ROUTE 136 TEMPORARY RUN-AROUND.
 - a. TEMPORARY DRAINAGE
 - b. EARTHWORK
 - c. PAVEMENT
 - d. TEMPORARY CONCRETE BARRIER AND ATTENUATORS
 2. COMPLETE U.S. ROUTE 136 (RELOCATED).
- TRAFFIC:**
1. MAINTAIN 2 WAY TRAFFIC ON EXISTING U.S. ROUTE 136 WHEN TEMPORARY RUN-AROUND IS CONSTRUCTED.
 2. SHIFT U.S. ROUTE 136 TRAFFIC TO TEMPORARY RUN-AROUND TO COMPLETE U.S. ROUTE 136 (RELOCATED).

F.A.P. RTE.	SECTION	COUNTY	TOTAL SHEETS	SHEET NO.
315	55-2	McDONOUGH	1025	74
STA. 210+00 TO STA. 222+00		FED. ROAD DIST. NO. 4 ILLINOIS FED. AID PROJECT		

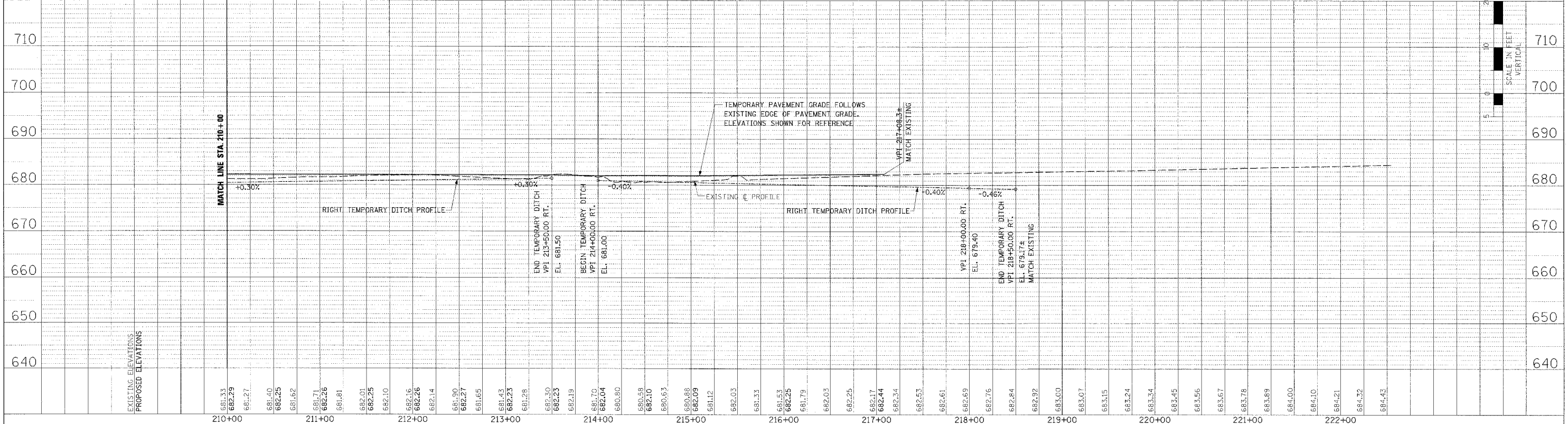
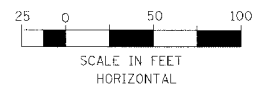


- TRAFFIC CONTROL**
HIGHWAY STANDARDS:
- 701006
 - 701306
 - 701326
 - 701331

* TAPE SHALL BE USED ON EXISTING U.S. ROUTE 136 PAVEMENT STA. 33+00 TO STA. 40+00±



- TEMPORARY EROSION CONTROL LEGEND**
- TEMPORARY DITCH CHECK
 - INLET AND PIPE PROTECTION
 - EROSION CONTROL BLANKET
 - HEAVY DUTY EROSION CONTROL BLANKET
 - AGGREGATE DITCH (TO BE PLACED UPON COMPLETION OF DITCH CUT)
 - PERIMETER EROSION BARRIER



MAINTENANCE OF TRAFFIC - STAGE I - PHASE 1 - U.S. ROUTE 136 (TEMPORARY RUN-AROUND) - STA. 210+00 TO STA. 222+00