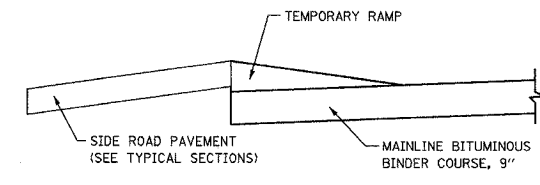
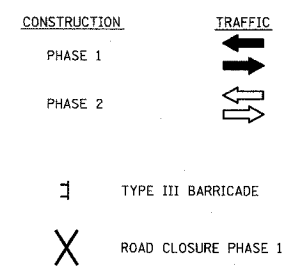


F.A.P. RTE.	SECTION	COUNTY	TOTAL SHEETS	SHEET NO.
315	55-2	McDONOUGH	1025	78
STA. 321+00		TO STA. 329+50		
FED. ROAD DIST. NO. 4 ILLINOIS FED. AID PROJECT				



**TEMPORARY RAMP FOR TEMPORARY CROSSINGS**  
NOT TO SCALE

NOTE:  
SEE SPECIAL PROVISIONS FOR CLOSURE RESTRICTIONS.  
TOP TWO LIFTS OF BITUMINOUS ON IL. RTE. 336 TO BE PLACED IN STAGE II.



- CONSTRUCTION:  
PHASE 1
- CLOSE TWP. RD. 150 FOR RECONSTRUCTION OF DRAINAGE STRUCTURES AND ROADWAY. STA. 25+75 TO STA. 34+00
  - RECONSTRUCTION OF INTERSECTION CO. HWY. 8 AND TWP. RD. 150 AND TWP. RD. 900N. STA. 34+00 TO STA. 38+00
  - CONSTRUCT INTERSECTION OF IL. RTE. 336 AND CO. HWY. 8 (RELOCATED) STA. 323+00± TO STA. 326+00±.

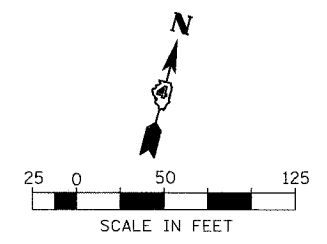
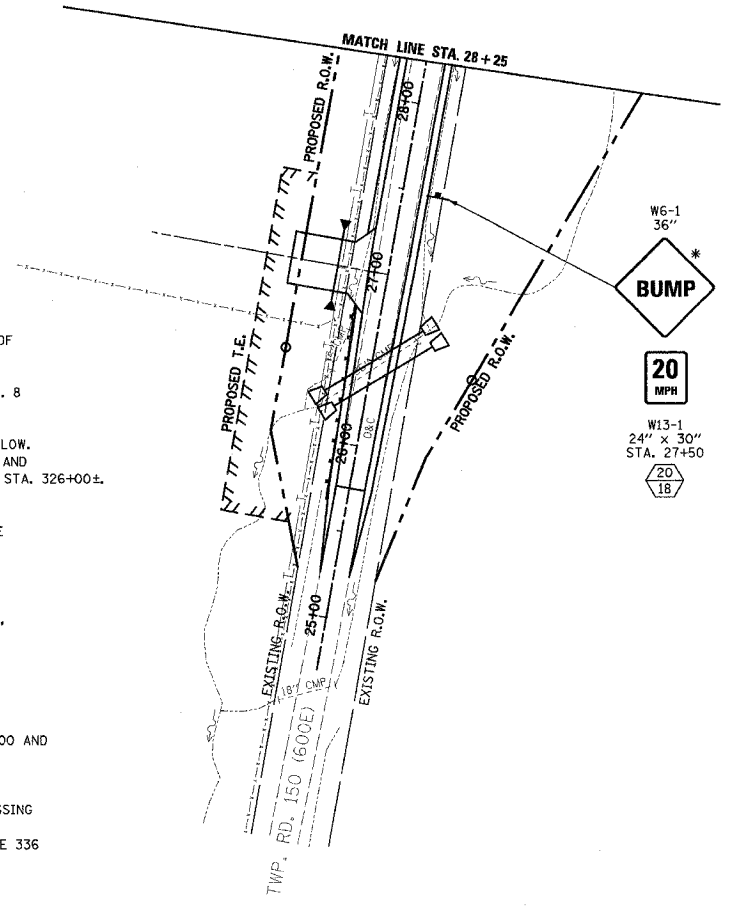
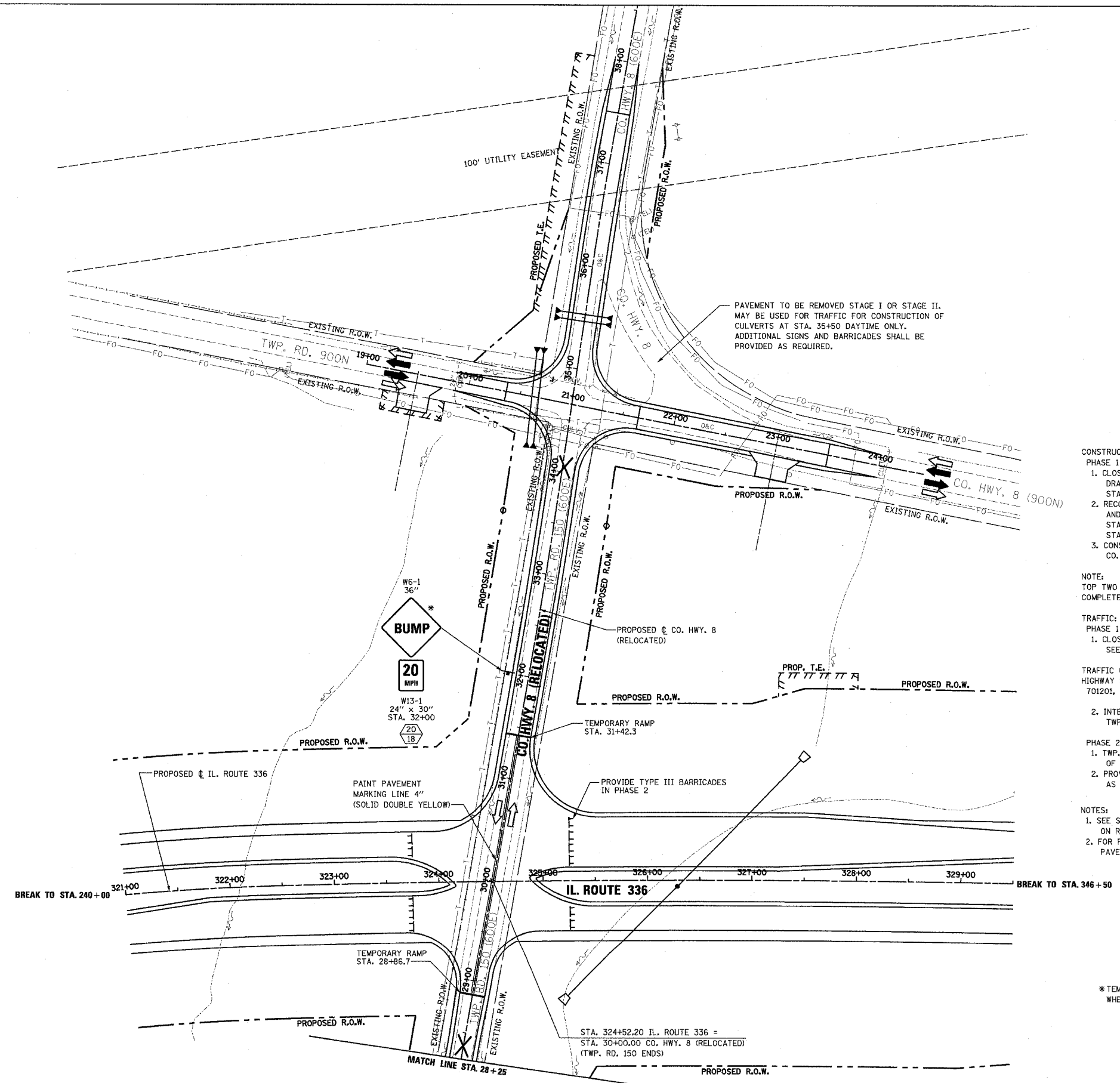
NOTE:  
TOP TWO LIFTS OF BITUMINOUS PAVEMENT TO BE COMPLETED IN STAGE II.

- TRAFFIC:  
PHASE 1
- CLOSE TWP. RD. 150, SIGNED DETOUR ROUTE, SEE DETOURS SHEET

- TRAFFIC CONTROL  
HIGHWAY STANDARD:  
701201, BLR 18, BLR-21
- INTERSECTION IMPROVEMENT OF TWP. RD. 900 AND TWP. RD. 200.

- PHASE 2
- TWP. RD. 150 OPEN, USING TEMPORARY CROSSING OF IL. ROUTE 336.
  - PROVIDE TYPE III BARRICADES ON IL. ROUTE 336 AS SHOWN.

- NOTES:
- SEE SPECIAL PROVISIONS FOR RESTRICTIONS ON ROAD CLOSURE.
  - FOR PERMANENT PAVEMENT MARKING SEE PAVEMENT MARKING AND SIGNING PLAN.



\* TEMPORARY SIGN TO BE REMOVED WHEN NO LONGER REQUIRED.

REVISIONS	
NAME	DATE

ILLINOIS DEPARTMENT OF TRANSPORTATION  
**MAINTENANCE OF TRAFFIC -- STAGE I**  
**IL. ROUTE 336**  
**STA. 321+00 TO STA. 329+50**

DATE 3/30/06  
DRAWN BY  
CHECKED BY

NOT FOR CONSTRUCTION 4/17/06 B-12-09 AM