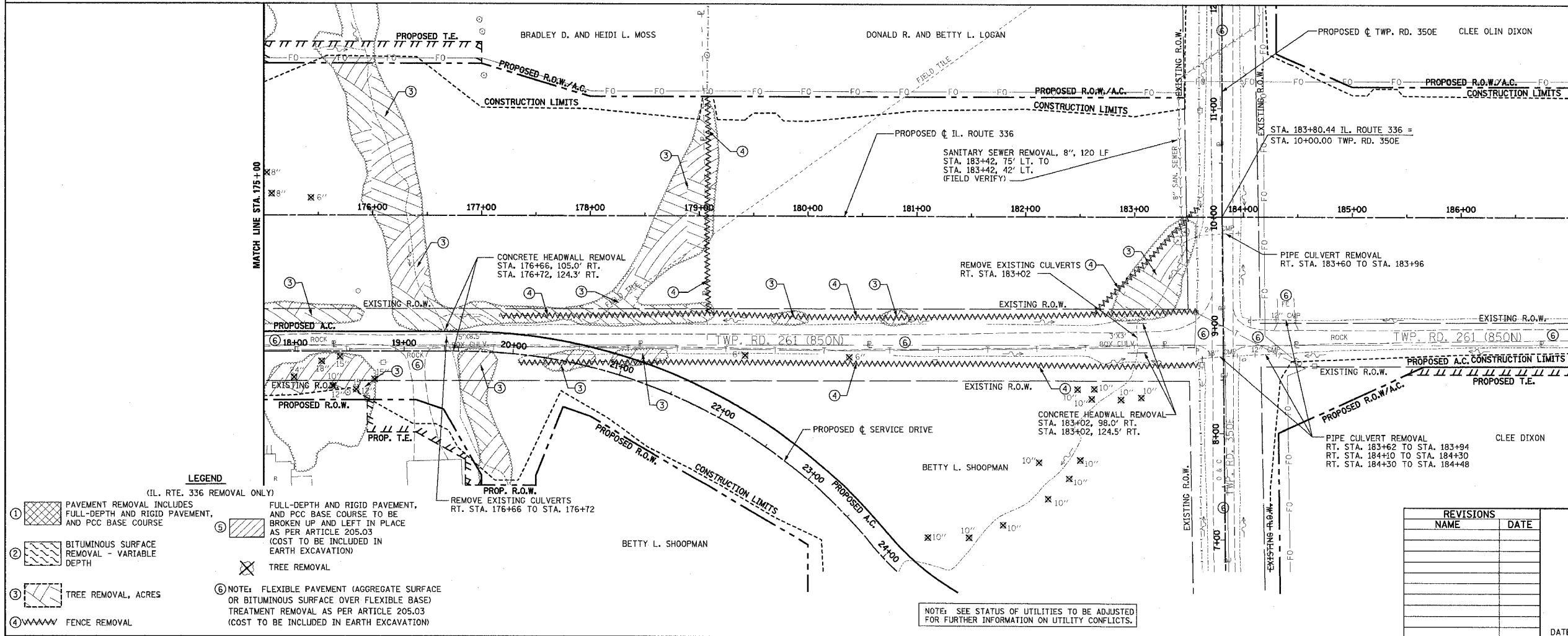
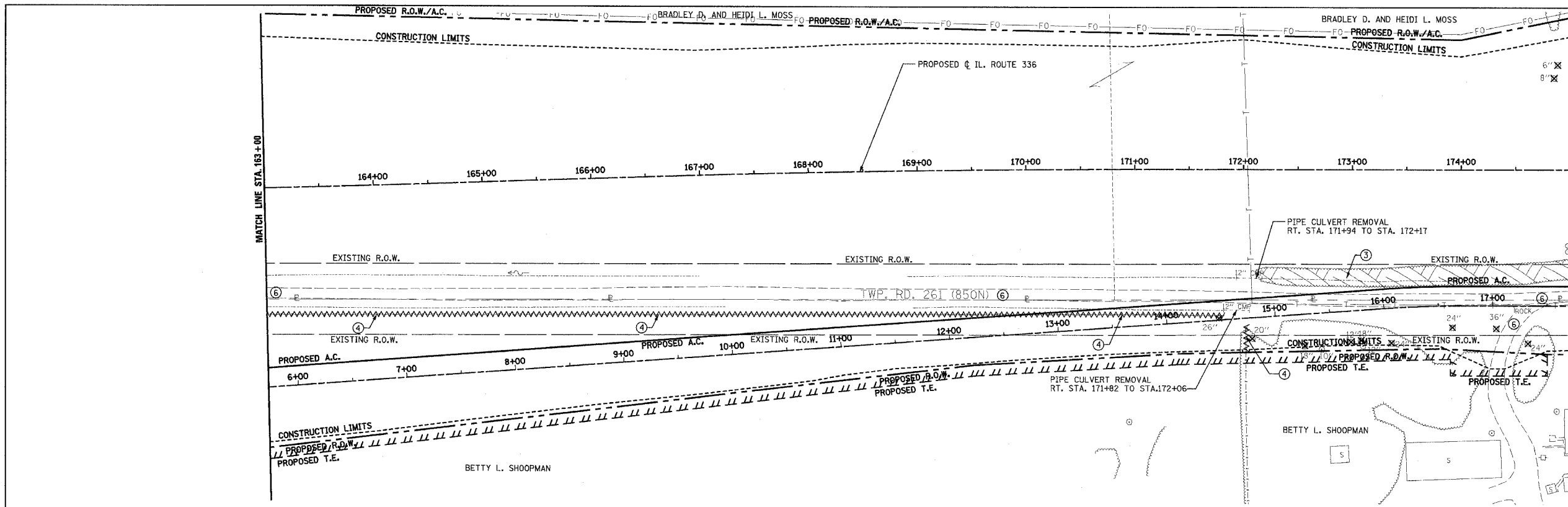


F.A.P. RTE.	SECTION	COUNTY	TOTAL SHEETS	SHEET NO.
315	55-2	McDONOUGH	1025	97
STA. 163+00		TO STA. 187+00		
FED. ROAD DIST. NO. 4 ILLINOIS FED. AID PROJECT				

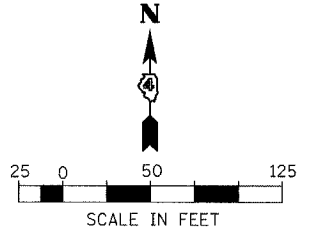
- ③ TREE REMOVAL, ACRES
RT. STA. 172+10 TO RT. STA. 175+00
- ④ FENCE REMOVAL
RT. STA. 163+00 TO RT. STA. 171+80
RT. STA. 172+02



- ③ TREE REMOVAL, ACRES
RT. STA. 175+00 TO RT. STA. 175+90
RT. STA. 175+00 TO RT. STA. 176+00
LT. STA. 175+55 TO LT. STA. 179+20
RT. STA. 176+75 TO RT. STA. 177+25
RT. STA. 177+55 TO RT. STA. 178+00
RT. STA. 178+20 TO RT. STA. 178+70
RT. STA. 179+65 TO RT. STA. 180+00
RT. STA. 180+65 TO RT. STA. 180+90
RT. STA. 182+80 TO RT. STA. 183+55
- ④ FENCE REMOVAL
RT. STA. 177+16 TO RT. STA. 183+58
RT. STA. 177+34 TO RT. STA. 183+60
LT. STA. 179+07 TO RT. STA. 179+09
RT. STA. 182+60 TO LT. STA. 183+55

LEGEND

- ① (IL. RTE. 336 REMOVAL ONLY) PAVEMENT REMOVAL INCLUDES FULL-DEPTH AND RIGID PAVEMENT, AND PCC BASE COURSE
- ② BITUMINOUS SURFACE REMOVAL - VARIABLE DEPTH
- ③ TREE REMOVAL, ACRES
- ④ FENCE REMOVAL
- ⑤ FULL-DEPTH AND RIGID PAVEMENT, AND PCC BASE COURSE TO BE BROKEN UP AND LEFT IN PLACE AS PER ARTICLE 205.03 (COST TO BE INCLUDED IN EARTH EXCAVATION)
- ⑥ NOTE: FLEXIBLE PAVEMENT (AGGREGATE SURFACE OR BITUMINOUS SURFACE OVER FLEXIBLE BASE) TREATMENT REMOVAL AS PER ARTICLE 205.03 (COST TO BE INCLUDED IN EARTH EXCAVATION)
- REMOVE EXISTING CULVERTS RT. STA. 176+66 TO STA. 176+72



REVISIONS	
NAME	DATE

ILLINOIS DEPARTMENT OF TRANSPORTATION
REMOVAL ITEMS
IL. ROUTE 336
STA. 163+00 TO STA. 187+00
DATE 3/30/06
DRAWN BY
CHECKED BY

NOTE: SEE STATUS OF UTILITIES TO BE ADJUSTED FOR FURTHER INFORMATION ON UTILITY CONFLICTS.