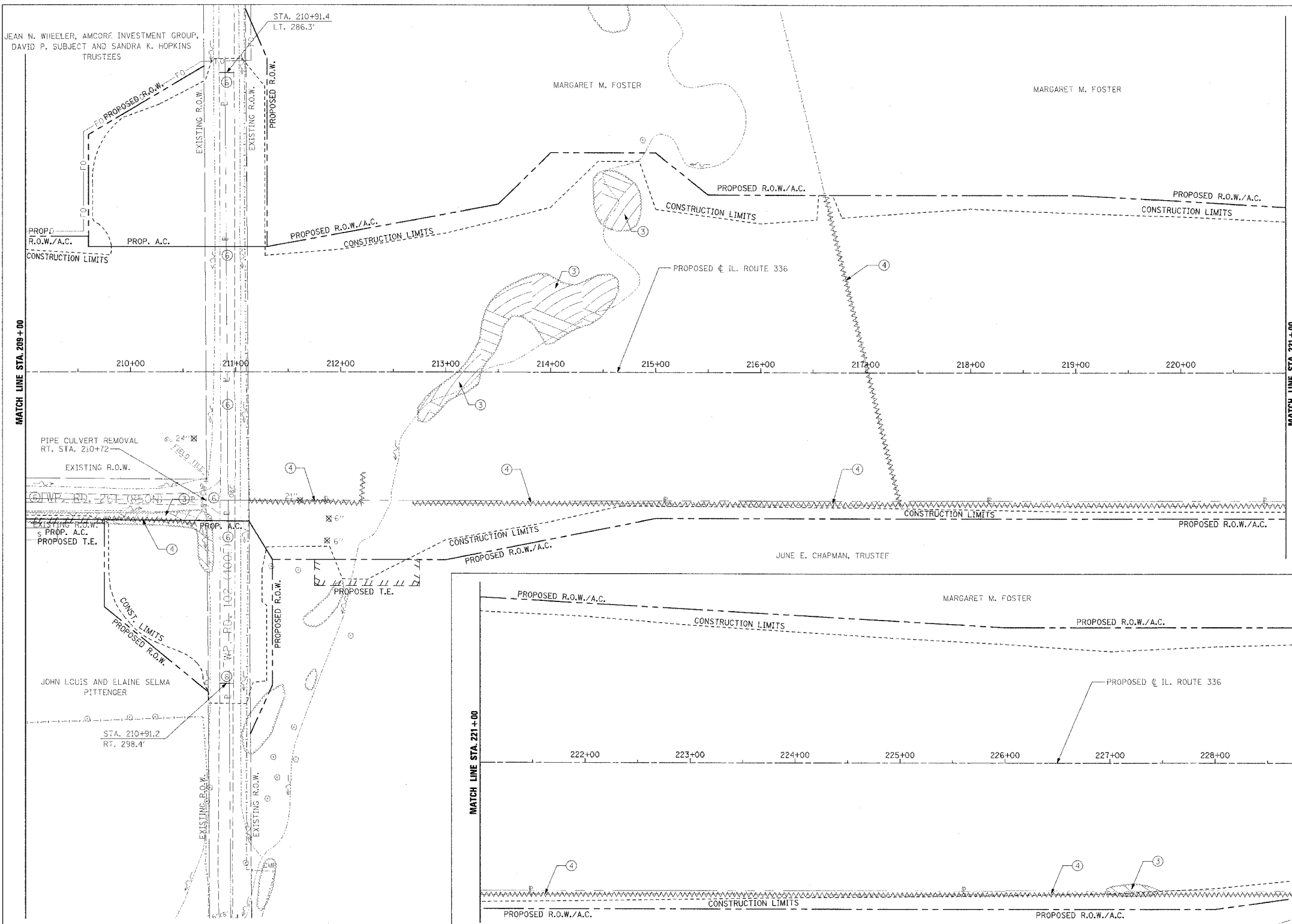


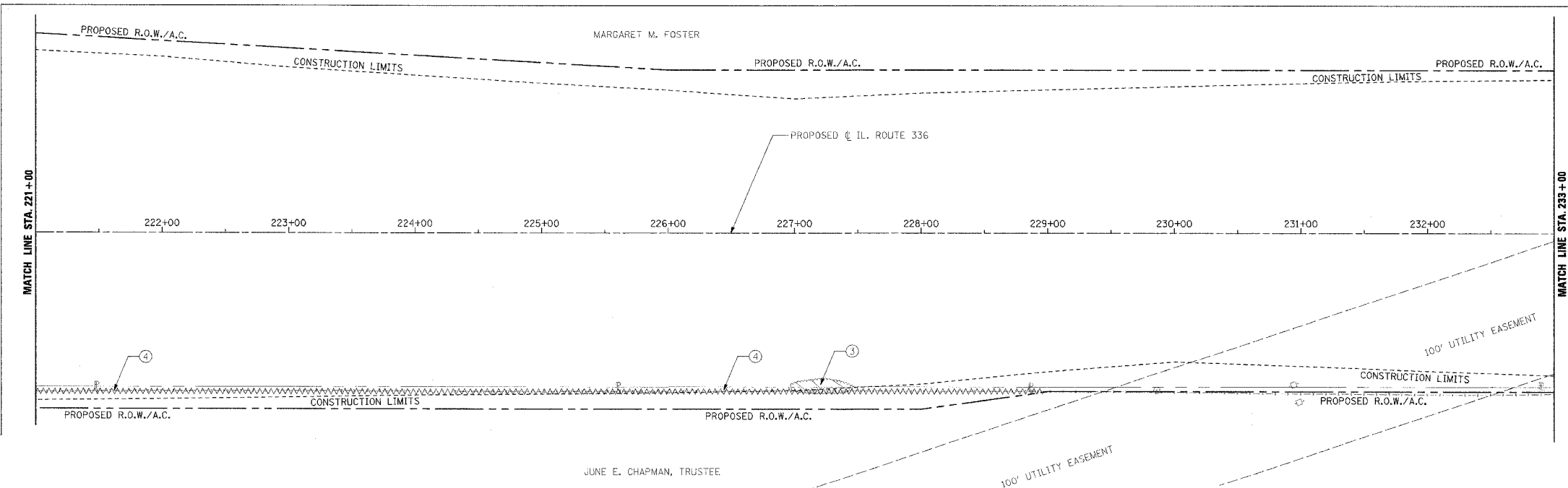
F.A.P. RTE.	SECTION	COUNTY	TOTAL SHEETS	SHEET NO.
315	55-2	McDONOUGH	1025	99
STA. 209+00		TO STA. 233+00		
FED. ROAD DIST. NO. 4		ILLINOIS FED. AID PROJECT		

- ③ TREE REMOVAL, ACRES  
RT. STA. 209+00 TO RT. STA. 210+75  
RT. STA. 212+70 TO RT. STA. 214+60  
LT. STA. 214+41 TO LT. STA. 214+87
- ④ FENCE REMOVAL  
RT. STA. 209+75 TO RT. STA. 210+65  
RT. STA. 211+10 TO RT. STA. 212+21  
RT. STA. 212+68 TO RT. STA. 221+00  
LT. STA. 216+61 TO RT. STA. 217+32



**LEGEND**

① [Symbol] PAVEMENT REMOVAL INCLUDES FULL-DEPTH AND RIGID PAVEMENT, AND PCC BASE COURSE	⑤ [Symbol] FULL-DEPTH AND RIGID PAVEMENT, AND PCC BASE COURSE TO BE BROKEN UP AND LEFT IN PLACE AS PER ARTICLE 205.03 (COST TO BE INCLUDED IN EARTH EXCAVATION)
② [Symbol] BITUMINOUS SURFACE REMOVAL - VARIABLE DEPTH	⑥ [Symbol] NOTE: FLEXIBLE PAVEMENT (AGGREGATE SURFACE OR BITUMINOUS SURFACE OVER FLEXIBLE BASE) TREATMENT REMOVAL AS PER ARTICLE 205.03 (COST TO BE INCLUDED IN EARTH EXCAVATION)
③ [Symbol] TREE REMOVAL, ACRES	[Symbol] TREE REMOVAL
④ [Symbol] FENCE REMOVAL	



NOTE: SEE STATUS OF UTILITIES TO BE ADJUSTED FOR FURTHER INFORMATION ON UTILITY CONFLICTS.

- ③ TREE REMOVAL, ACRES  
RT. STA. 226+95 TO RT. STA. 227+50
- ④ FENCE REMOVAL  
RT. STA. 221+00 TO RT. STA. 229+00

REVISIONS	
NAME	DATE

ILLINOIS DEPARTMENT OF TRANSPORTATION

**REMOVAL ITEMS**  
**IL. ROUTE 336**  
**STA. 209+00 TO STA. 233+00**

DATE 3/30/06

DRAWN BY \_\_\_\_\_  
CHECKED BY \_\_\_\_\_