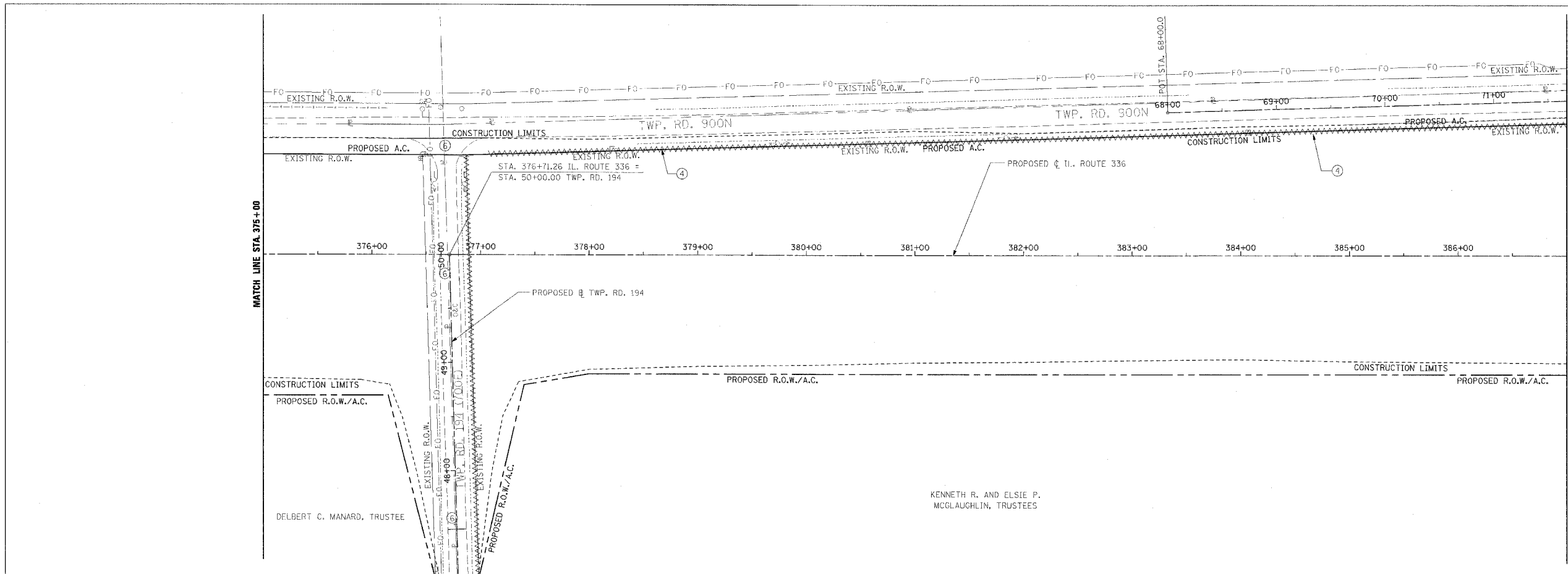
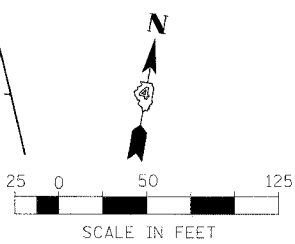
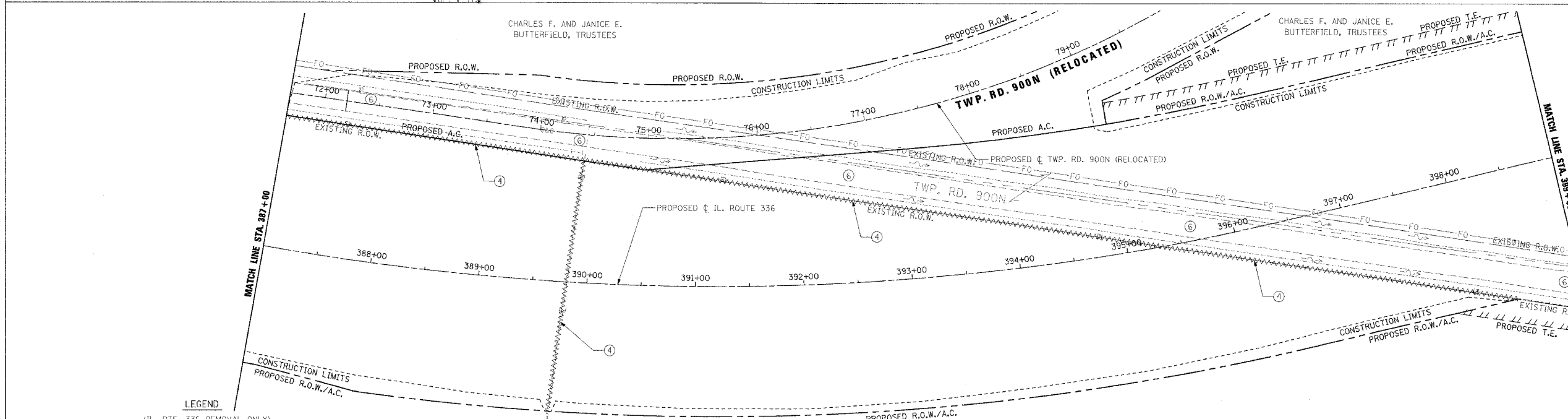


F.A.P. RTE.	SECTION	COUNTY	TOTAL SHEETS	SHEET NO.
315	55-2	McDONOUGH	1025	106
STA. 375+00		TO STA. 399+00		
FED. ROAD DIST. NO. 4 ILLINOIS FED. AID PROJECT				

④ FENCE REMOVAL
LT. STA. 377+07 TO LT. STA. 387+00



④ FENCE REMOVAL
LT. STA. 387+00 TO RT. STA. 398+35
RT. STA. 389+70 TO LT. STA. 389+90



- LEGEND**
- ① PAVEMENT REMOVAL INCLUDES FULL-DEPTH AND RIGID PAVEMENT, AND PCC BASE COURSE
 - ② BITUMINOUS SURFACE REMOVAL - VARIABLE DEPTH
 - ③ TREE REMOVAL, ACRES
 - ④ FENCE REMOVAL
 - ⑤ FULL-DEPTH AND RIGID PAVEMENT, AND PCC BASE COURSE TO BE BROKEN UP AND LEFT IN PLACE AS PER ARTICLE 205.03 (COST TO BE INCLUDED IN EARTH EXCAVATION)
 - ⑥ NOTE: FLEXIBLE PAVEMENT (AGGREGATE SURFACE OR BITUMINOUS SURFACE OVER FLEXIBLE BASE) TREATMENT REMOVAL AS PER ARTICLE 205.03 (COST TO BE INCLUDED IN EARTH EXCAVATION)
 - ⊗ TREE REMOVAL

NOTE: SEE STATUS OF UTILITIES TO BE ADJUSTED FOR FURTHER INFORMATION ON UTILITY CONFLICTS.

REVISIONS	
NAME	DATE

ILLINOIS DEPARTMENT OF TRANSPORTATION

REMOVAL ITEMS
IL. ROUTE 336
STA. 375+00 TO STA. 399+00

DATE 3/30/06

DRAWN BY
CHECKED BY