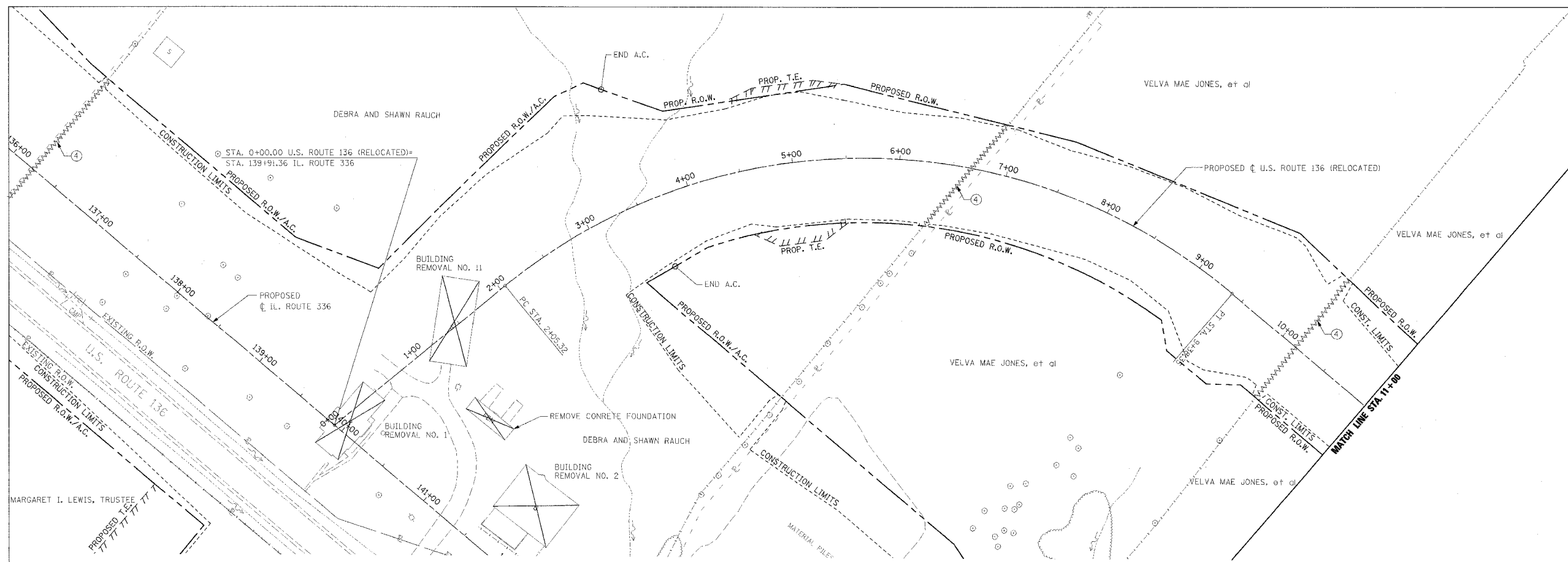
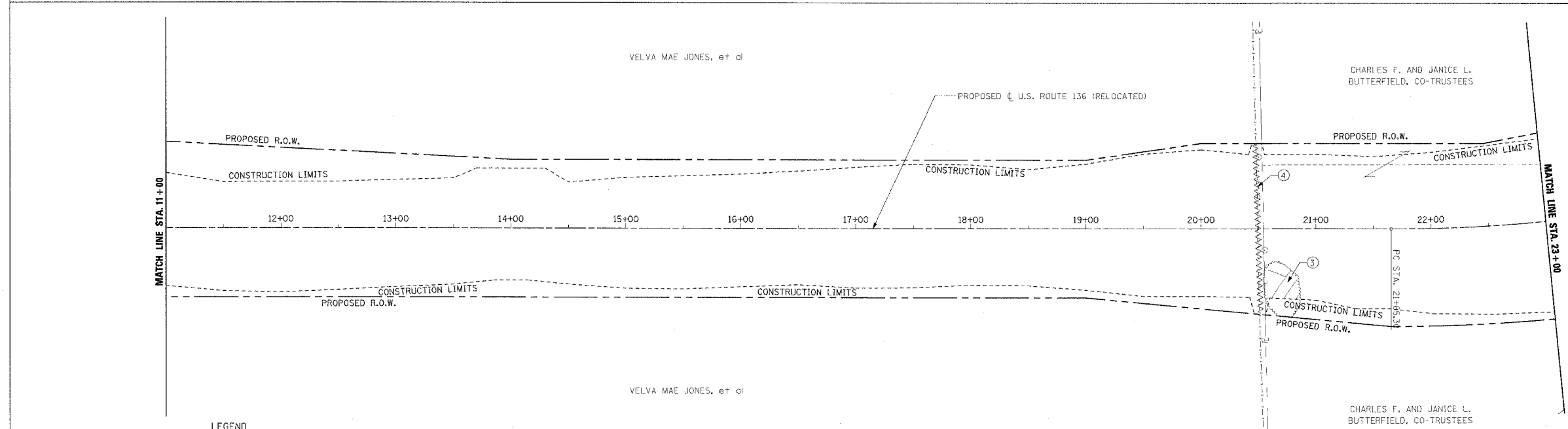


F.A.P. RTE.	SECTION	COUNTY	TOTAL SHEET SHEETS	NO.
315	55-2	McDONOUGH	1025	116
STA. 0+00.00		TO STA. 23+00		
FED. ROAD DIST. NO. 4 ILLINOIS FED. AID PROJECT				



④ FENCE REMOVAL
RT. STA. 6+29 TO LT. STA. 6+91
LT. STA. 10+13 TO RT. STA. 10+18



③ TREE REMOVAL, ACRES
RT. STA. 20+55 TO RT. STA. 20+75

④ FENCE REMOVAL
LT. STA. 20+48 TO RT. STA. 20+51

LEGEND

- (U.S. RTE. 136 (RELOCATED) REMOVAL ONLY)
- ① [Hatched Box] PAVEMENT REMOVAL INCLUDES FULL-DEPTH AND RIGID PAVEMENT, AND PCC BASE COURSE
 - ② [Wavy Box] BITUMINOUS SURFACE REMOVAL - VARIABLE DEPTH
 - ③ [Cross-hatched Box] TREE REMOVAL, ACRES
 - ④ [Wavy Line] FENCE REMOVAL
 - ⑤ [Diagonal Hatched Box] FULL-DEPTH AND RIGID PAVEMENT, AND PCC BASE COURSE TO BE BROKEN UP AND LEFT IN PLACE AS PER ARTICLE 205.03 (COST TO BE INCLUDED IN EARTH EXCAVATION)
 - [Crossed Box] TREE REMOVAL
 - ⑥ NOTE: FLEXIBLE PAVEMENT (AGGREGATE SURFACE OR BITUMINOUS SURFACE OVER FLEXIBLE BASE) TREATMENT REMOVAL AS PER ARTICLE 205.03 (COST TO BE INCLUDED IN EARTH EXCAVATION)

REVISIONS	
NAME	DATE

ILLINOIS DEPARTMENT OF TRANSPORTATION

REMOVAL PLAN
U.S. ROUTE 136 (RELOCATED)
STA. 0+00.00 TO STA. 23+00

DATE 3/30/06

DRAWN BY _____
CHECKED BY _____