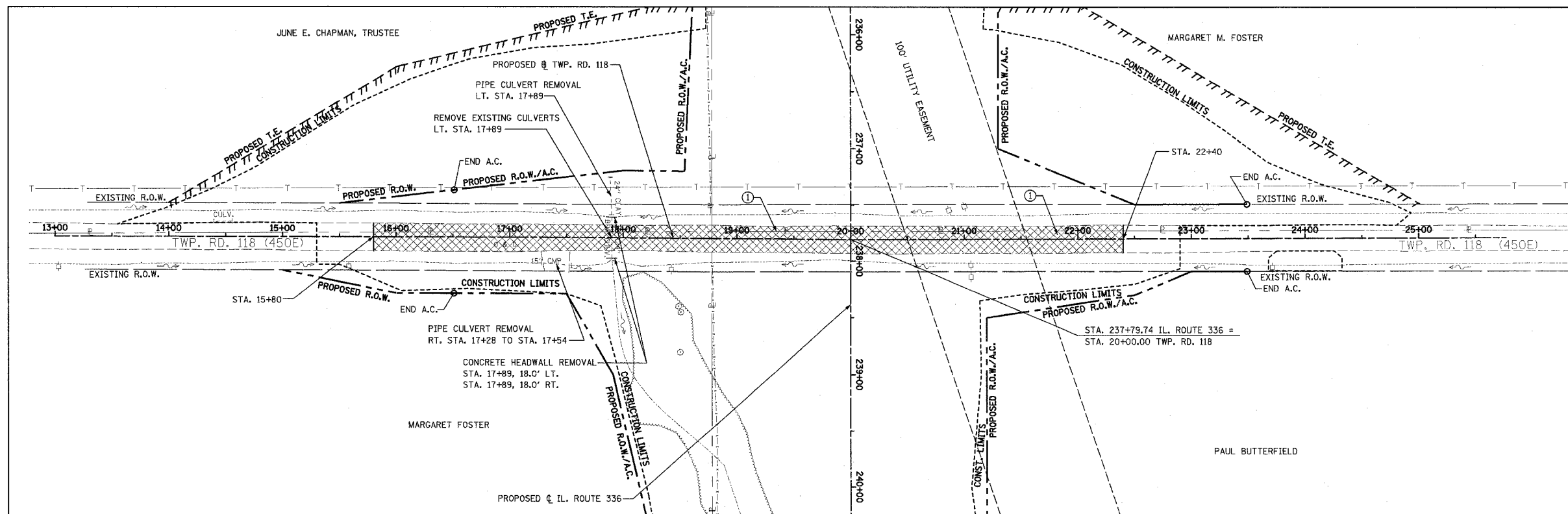
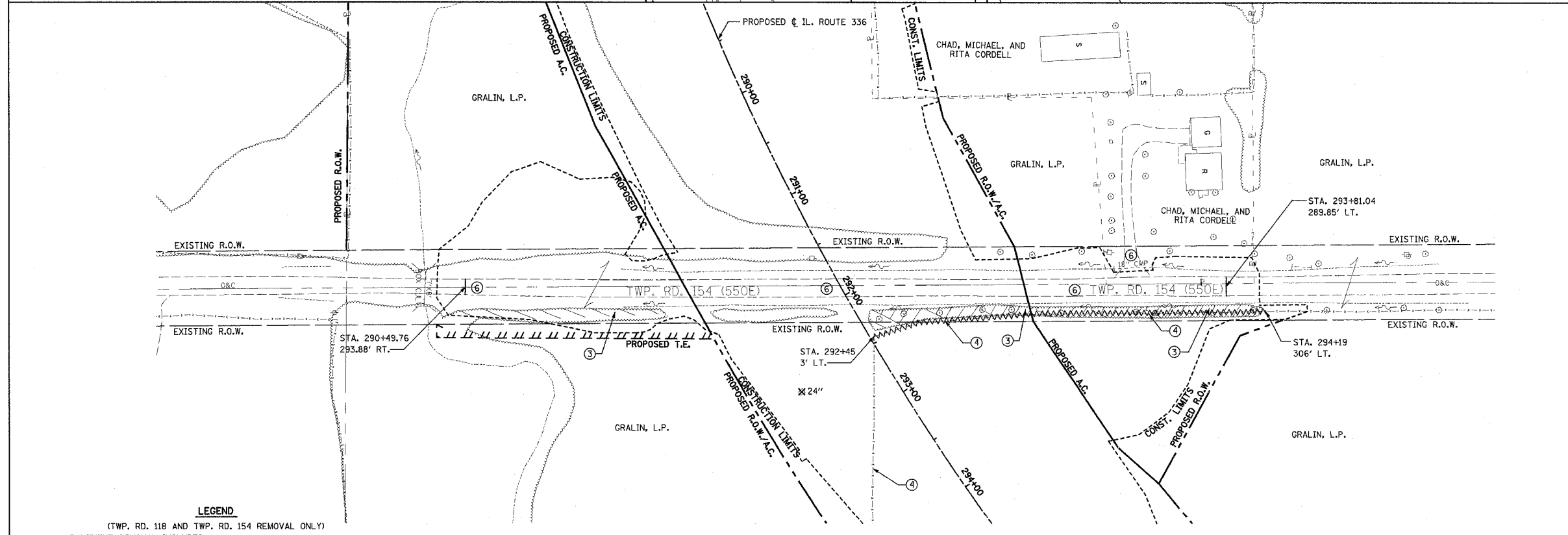


F.A.P. RTE.	SECTION	COUNTY	TOTAL SHEETS	SHEET NO.
315	55-2	MCDONOUGH	1025	119
STA. 13+50		TO STA. 25+00		
FED. ROAD DIST. NO. 4 ILLINOIS FED. AID PROJECT				



① PAVEMENT REMOVAL
STA. 15+80 TO STA. 22+40



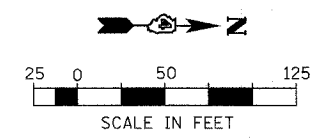
③ TREE REMOVAL, ACRES
RT. STA. 290+65 TO RT. STA. 291+40
LT. STA. 292+24 TO LT. STA. 294+19

④ FENCE REMOVAL
LT. STA. 292+50 TO LT. STA. 294+25

LEGEND

- ① (TWP. RD. 118 AND TWP. RD. 154 REMOVAL ONLY)
PAVEMENT REMOVAL INCLUDES FULL-DEPTH AND RIGID PAVEMENT, AND PCC BASE COURSE
- ② BITUMINOUS SURFACE REMOVAL - VARIABLE DEPTH
- ③ TREE REMOVAL, ACRES
- ④ FENCE REMOVAL
- ⑤ FULL-DEPTH AND RIGID PAVEMENT, AND PCC BASE COURSE TO BE BROKEN UP AND LEFT IN PLACE AS PER ARTICLE 205.03 (COST TO BE INCLUDED IN EARTH EXCAVATION)
- ⑥ NOTE: FLEXIBLE PAVEMENT (AGGREGATE SURFACE OR BITUMINOUS SURFACE OVER FLEXIBLE BASE) TREATMENT REMOVAL AS PER ARTICLE 205.03 (COST TO BE INCLUDED IN EARTH EXCAVATION)
- ✕ TREE REMOVAL

NOTE: SEE STATUS OF UTILITIES TO BE ADJUSTED FOR FURTHER INFORMATION ON UTILITY CONFLICTS.



REVISIONS	
NAME	DATE

ILLINOIS DEPARTMENT OF TRANSPORTATION
REMOVAL ITEMS
TWP. RD 118
STA. 13+50 TO STA. 25+00
TWP. RD. 154
DATE 3/30/06
DRAWN BY
CHECKED BY