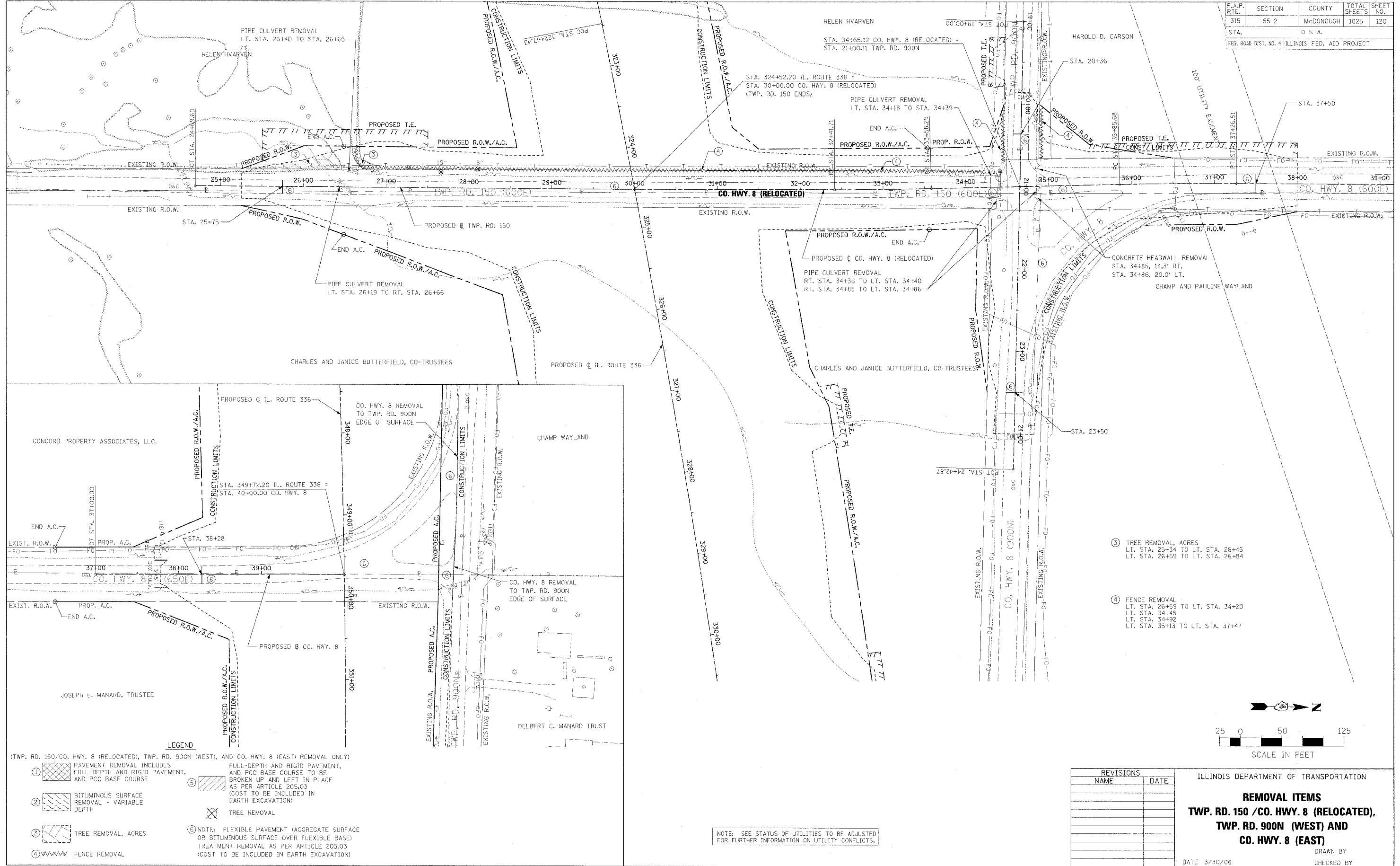


F.A.P. RTE.	SECTION	COUNTY	TOTAL SHEETS	SHEET NO.
315	55-2	MCDONOUGH	1025	120
STA.		TO STA.		
FED. ROAD DIST. NO. 4 ILLINOIS		FED. AID PROJECT		



- ③ TREE REMOVAL, ACRES
LT. STA. 25+34 TO LT. STA. 26+45
LT. STA. 26+59 TO LT. STA. 26+84
- ④ FENCE REMOVAL
LT. STA. 26+59 TO LT. STA. 34+20
LT. STA. 34+45
LT. STA. 34+92
LT. STA. 35+13 TO LT. STA. 37+47

LEGEND

- ① [Symbol] PAVEMENT REMOVAL INCLUDES FULL-DEPTH AND RIGID PAVEMENT, AND PCC BASE COURSE
- ② [Symbol] BITUMINOUS SURFACE REMOVAL - VARIABLE DEPTH
- ③ [Symbol] TREE REMOVAL, ACRES
- ④ [Symbol] FENCE REMOVAL
- ⑤ [Symbol] FULL-DEPTH AND RIGID PAVEMENT, AND PCC BASE COURSE TO BE BROKEN UP AND LEFT IN PLACE AS PER ARTICLE 205.03 (COST TO BE INCLUDED IN EARTH EXCAVATION)
- [Symbol] TREE REMOVAL
- ⑥ NOTE: FLEXIBLE PAVEMENT (AGGREGATE SURFACE OR BITUMINOUS SURFACE OVER FLEXIBLE BASE) TREATMENT REMOVAL AS PER ARTICLE 205.03 (COST TO BE INCLUDED IN EARTH EXCAVATION)

NOTE: SEE STATUS OF UTILITIES TO BE ADJUSTED FOR FURTHER INFORMATION ON UTILITY CONFLICTS.

REVISIONS	
NAME	DATE

ILLINOIS DEPARTMENT OF TRANSPORTATION

REMOVAL ITEMS
TWP. RD. 150 / CO. HWY. 8 (RELOCATED),
TWP. RD. 900N (WEST) AND
CO. HWY. 8 (EAST)

DATE 3/30/06

DRAWN BY _____
 CHECKED BY _____