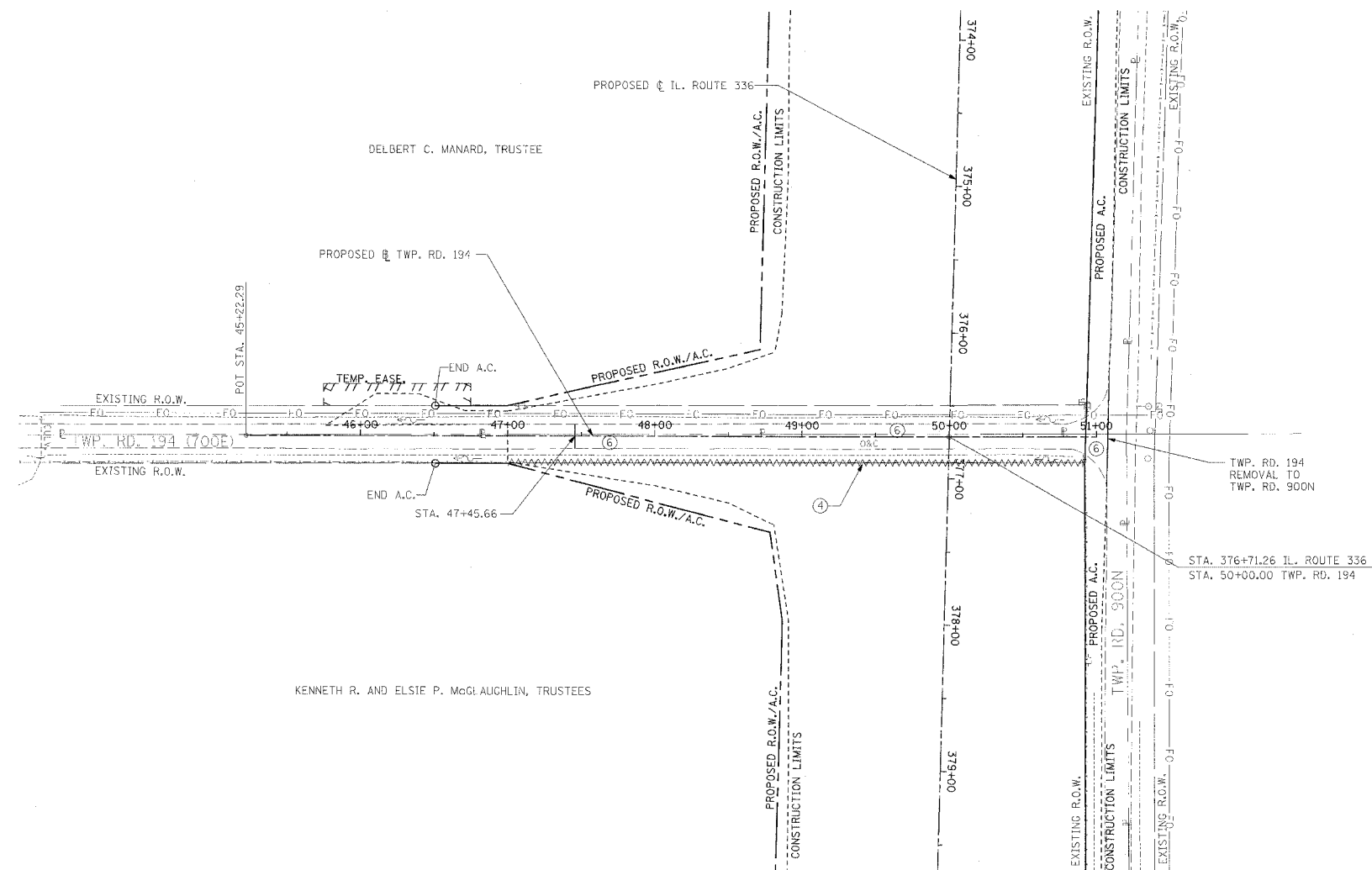
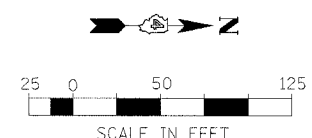


F.A.P. RTE.	SECTION	COUNTY	TOTAL SHEETS	SHEET NO.
315	55-2	MCDONOUGH	1025	121
STA. 46+00		TO STA. 51+15.22		
FED. ROAD DIST. NO. 4		ILLINOIS FED. AID PROJECT		

④ FENCE REMOVAL  
RT. STA. 47+00 TO RT. STA. 50+92



TWP. RD. 194 REMOVAL TO TWP. RD. 900N  
STA. 376+71.26 IL. ROUTE 336 = STA. 50+00.00 TWP. RD. 194



**LEGEND**

- ① [Symbol] PAVEMENT REMOVAL INCLUDES FULL-DEPTH AND RIGID PAVEMENT, AND PCC BASE COURSE
- ② [Symbol] BITUMINOUS SURFACE REMOVAL - VARIABLE DEPTH
- ③ [Symbol] TREE REMOVAL, ACRES
- ④ [Symbol] FENCE REMOVAL
- (TWP. RD. 194 REMOVAL ONLY)
- ⑤ [Symbol] FULL-DEPTH AND RIGID PAVEMENT, AND PCC BASE COURSE TO BE BROKEN UP AND LEFT IN PLACE AS PER ARTICLE 205.03 (COST TO BE INCLUDED IN EARTH EXCAVATION)
- [Symbol] TREE REMOVAL
- ⑥ NOTE: FLEXIBLE PAVEMENT (AGGREGATE SURFACE OR BITUMINOUS SURFACE OVER FLEXIBLE BASE) TREATMENT REMOVAL AS PER ARTICLE 205.03 (COST TO BE INCLUDED IN EARTH EXCAVATION)

NOTE: SEE STATUS OF UTILITIES TO BE ADJUSTED FOR FURTHER INFORMATION ON UTILITY CONFLICTS.

REVISIONS	
NAME	DATE

ILLINOIS DEPARTMENT OF TRANSPORTATION  
**REMOVAL ITEMS**  
**TWP. RD.194**  
**STA. 46+00 TO STA. 51+15.22**  
DATE 3/30/06  
DRAWN BY  
CHECKED BY