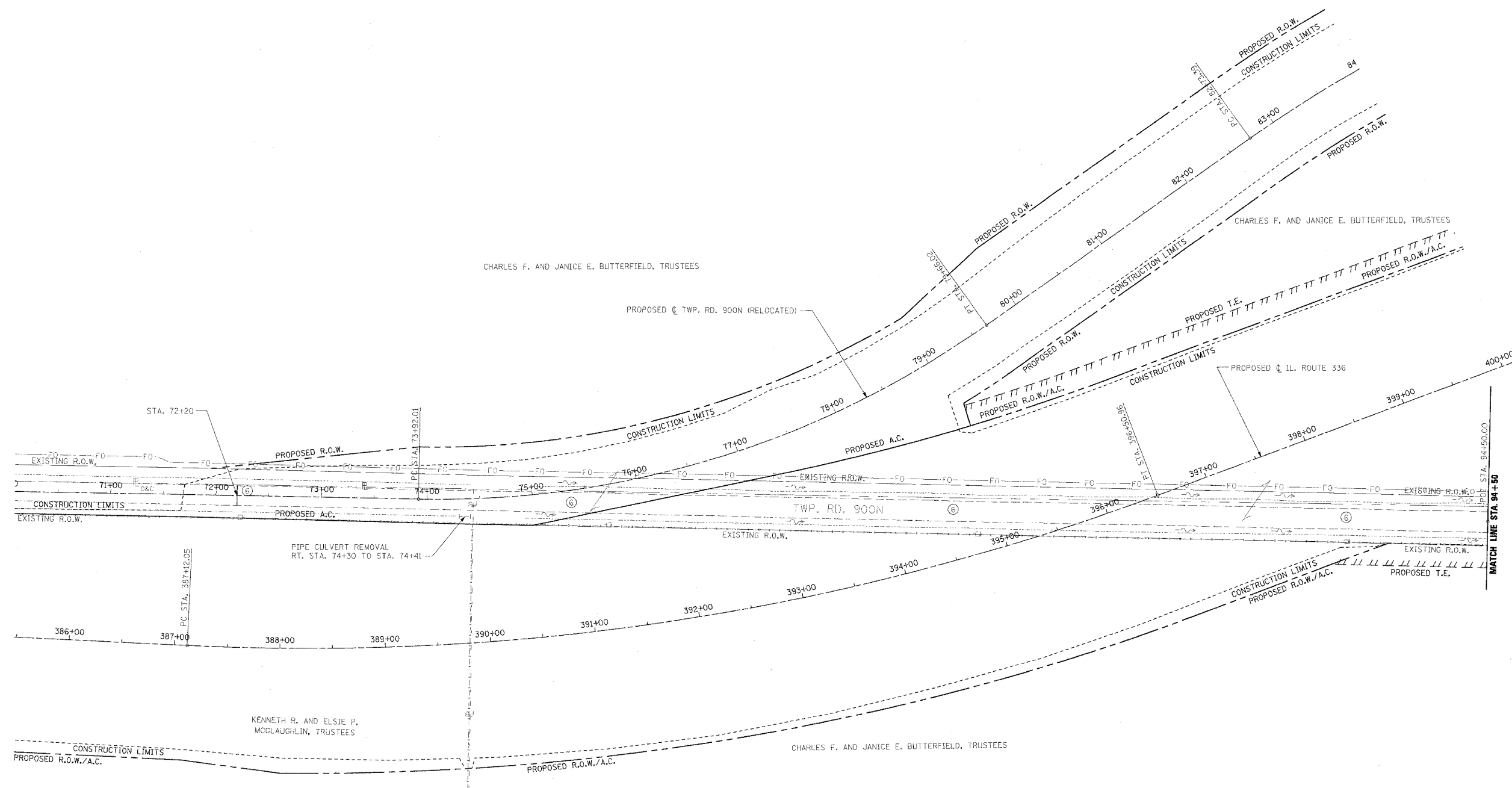
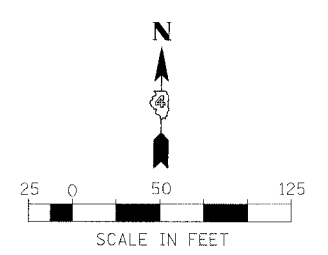


F.A.P. RTE.	SECTION	COUNTY	TOTAL SHEETS	SHEET NO.
315	55-2	McDONOUGH	1025	122
STA. 71+00		TO STA. 83+00		
FED. ROAD DIST. NO. 4		ILLINOIS	FED. AID PROJECT	



- LEGEND**
(TWP. RD. 900N (RELOCATED) REMOVAL ONLY)
- ① [Hatched Box] PAVEMENT REMOVAL INCLUDES FULL-DEPTH AND RIGID PAVEMENT, AND PCC BASE COURSE
 - ② [Hatched Box] BITUMINOUS SURFACE REMOVAL - VARIABLE DEPTH
 - ③ [Hatched Box] TREE REMOVAL, ACRES
 - ④ [Wavy Line] FENCE REMOVAL
 - ⑤ [Hatched Box] FULL-DEPTH AND RIGID PAVEMENT, AND PCC BASE COURSE TO BE BROKEN UP AND LEFT IN PLACE AS PER ARTICLE 205.03 (COST TO BE INCLUDED IN EARTH EXCAVATION)
 - ⊗ TREE REMOVAL
 - ⑥ NOTE: FLEXIBLE PAVEMENT (AGGREGATE SURFACE OR BITUMINOUS SURFACE OVER FLEXIBLE BASE) TREATMENT REMOVAL AS PER ARTICLE 205.03 (COST TO BE INCLUDED IN EARTH EXCAVATION)

NOTE: SEE STATUS OF UTILITIES TO BE ADJUSTED FOR FURTHER INFORMATION ON UTILITY CONFLICTS.



REVISIONS	
NAME	DATE

ILLINOIS DEPARTMENT OF TRANSPORTATION

REMOVAL ITEMS
TWP. RD. 900N (RELOCATED)
STA. 71+00 TO STA. 83+00

DATE 3/30/06

DRAWN BY _____
CHECKED BY _____