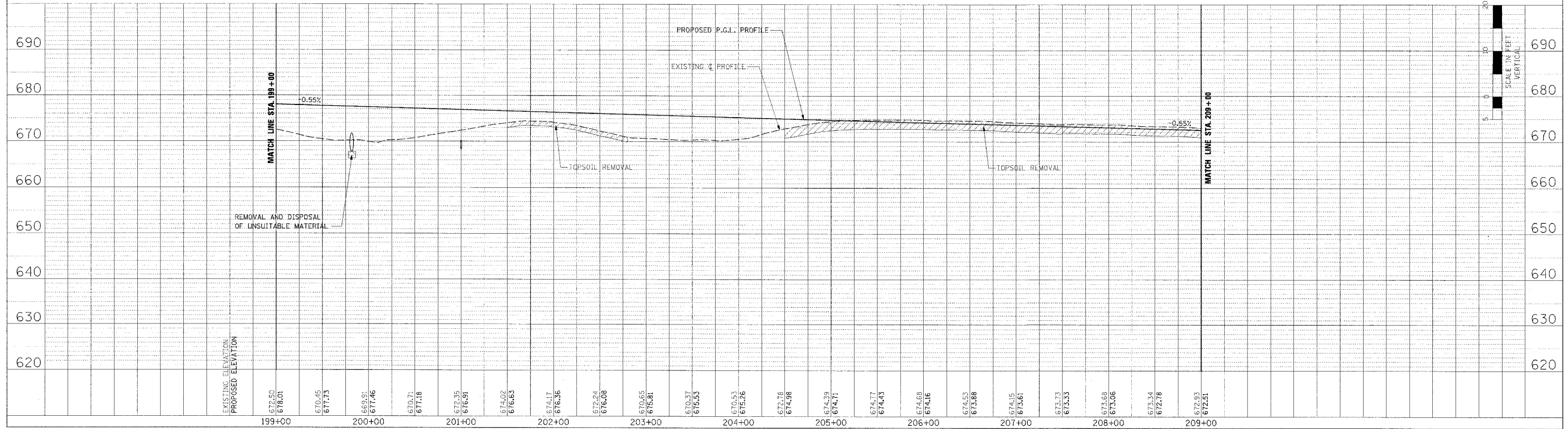
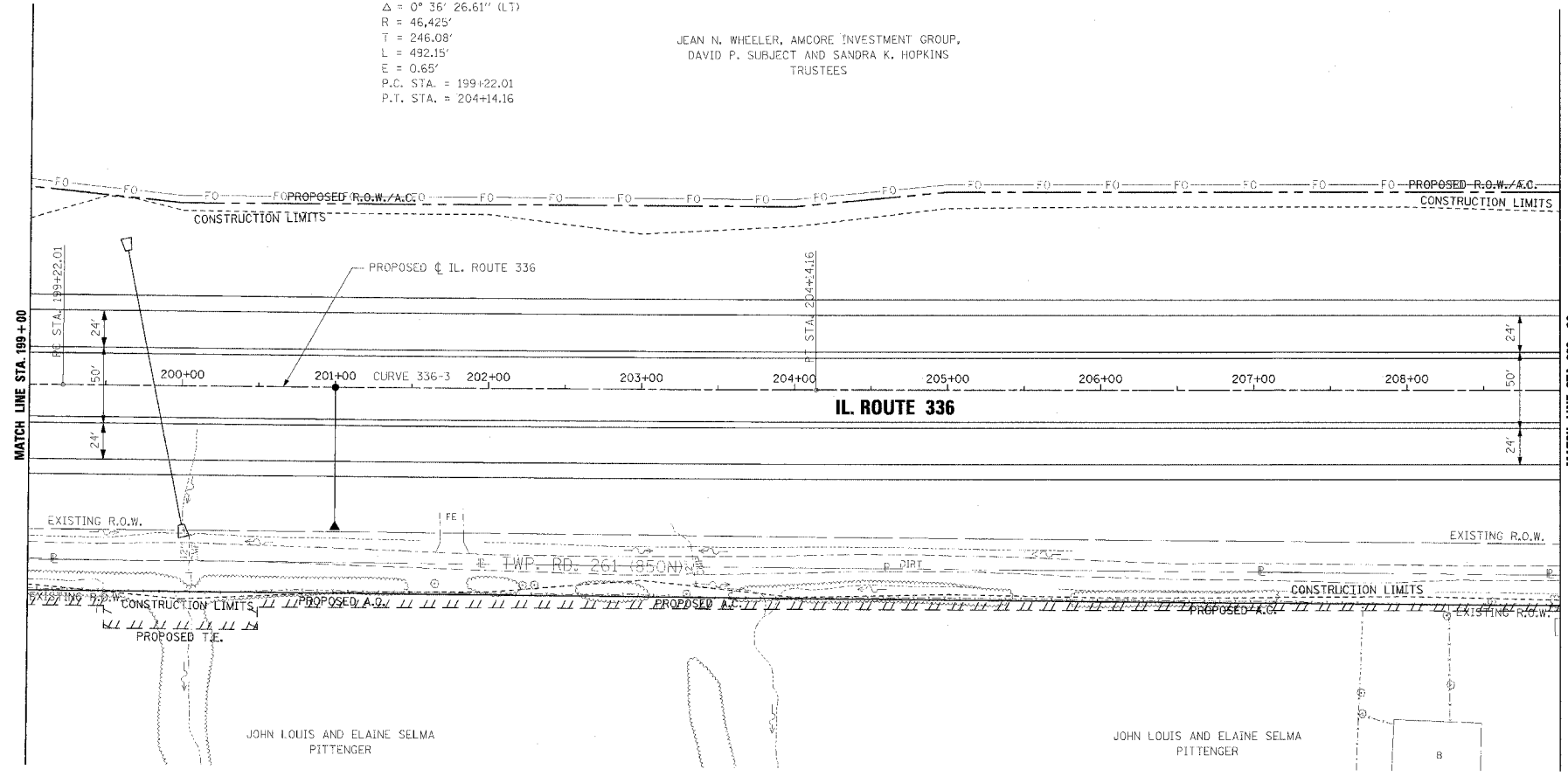


F.A.P. RTE.	SECTION	COUNTY	TOTAL SHEETS	SHEET NO.
315	55-2	McDONOUGH	1025	133
STA. 199+00		TO STA. 209+00		
FED. ROAD DIST. NO. 4		ILLINOIS FED. AID PROJECT		

PROPOSED CURVE 336-3 DATA
 P.I. STA. = 201+66.09
 $\Delta = 0^\circ 36' 26.61''$ (L1)
 R = 46,425'
 T = 246.08'
 L = 492.15'
 E = 0.65'
 P.C. STA. = 199+22.01
 P.T. STA. = 204+14.16

JEAN N. WHEELER, AMCORE INVESTMENT GROUP,
 DAVID P. SUBJECT AND SANDRA K. HOPKINS
 TRUSTEES



ROADWAY PLAN AND PROFILE - IL. ROUTE 336 - STA. 199+00 TO STA. 209+00

DATE	BY	REVISION

PLAN

DESIGNED BY: _____
 CHECKED BY: _____
 DATE: _____

DATE	BY	REVISION

PROFILE

DESIGNED BY: _____
 CHECKED BY: _____
 DATE: _____