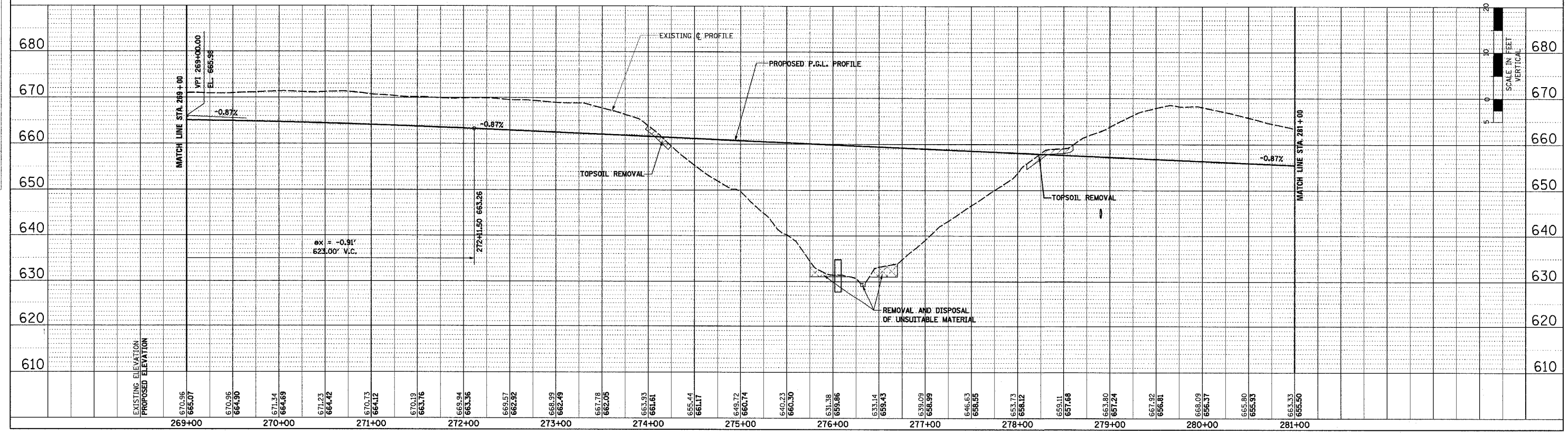
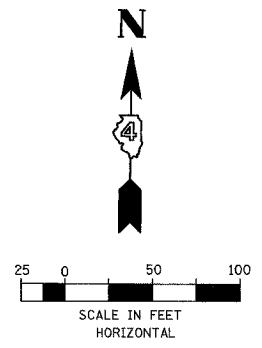
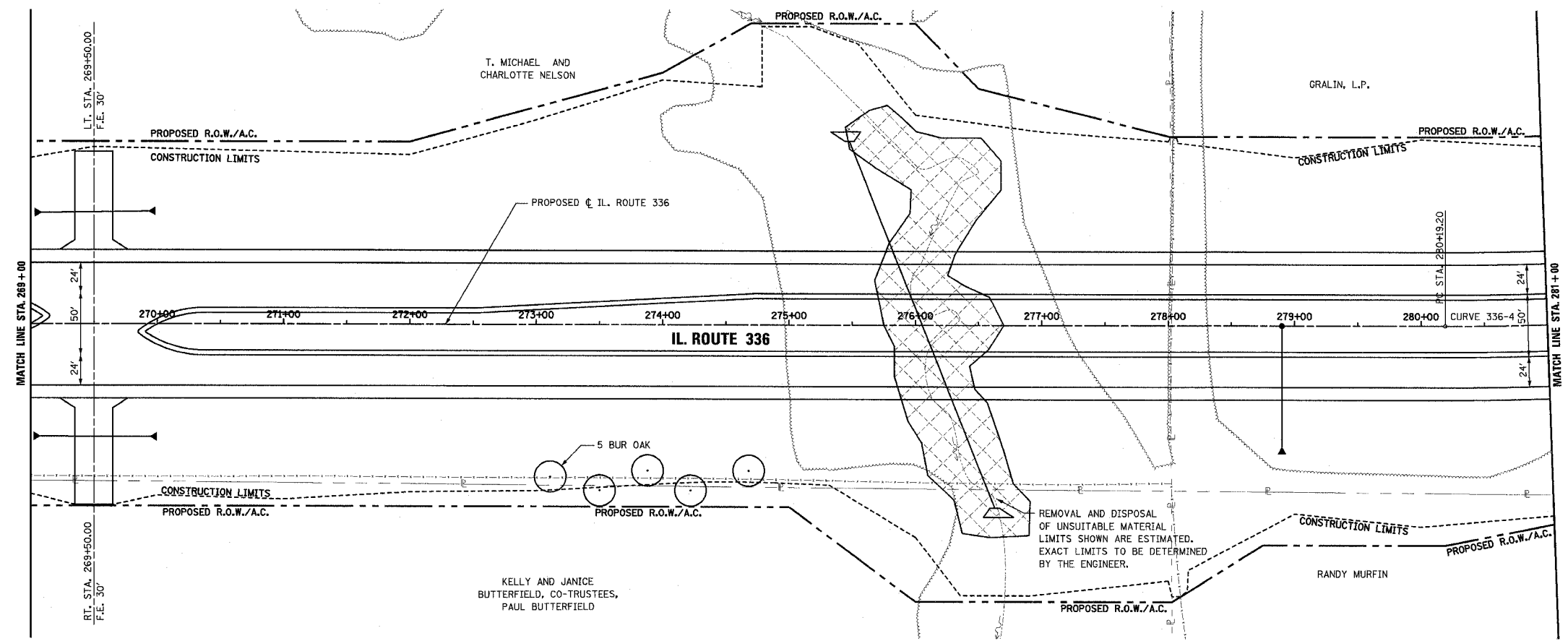


F.A.P. RTE.	SECTION	COUNTY	TOTAL SHEETS	SHEET NO.
315	55-2	MCDONOUGH	1025	139
STA. 269+00 TO STA. 281+00				
FED. ROAD DIST. NO. 4 ILLINOIS FED. AID PROJECT				

PROPOSED CURVE 336-4 DATA
P.I. STA. = 289+07.47
 Δ = 42° 14' 01.17" (LT)
R = 2,300'
T = 888.27'
L = 1,695.37'
E = 165.57'
S.E. = 5.90%
TRANSITION IN = 278+03 TO 281+08
TRANSITION OUT = 296+26 TO 299+30
P.C. STA. = 280+19.20
P.T. STA. = 297+14.57

PLAN	DATE
BY	
NO.	

PROFILE	DATE
BY	
NO.	



ROADWAY PLAN AND PROFILE - IL. ROUTE 336 - STA. 269+00 TO STA. 281+00

1395814-091 4/17/2005 11:25:11 AM