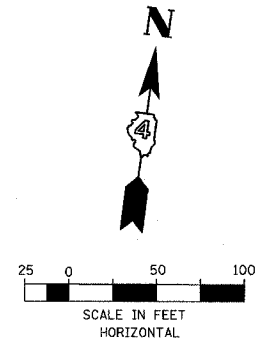
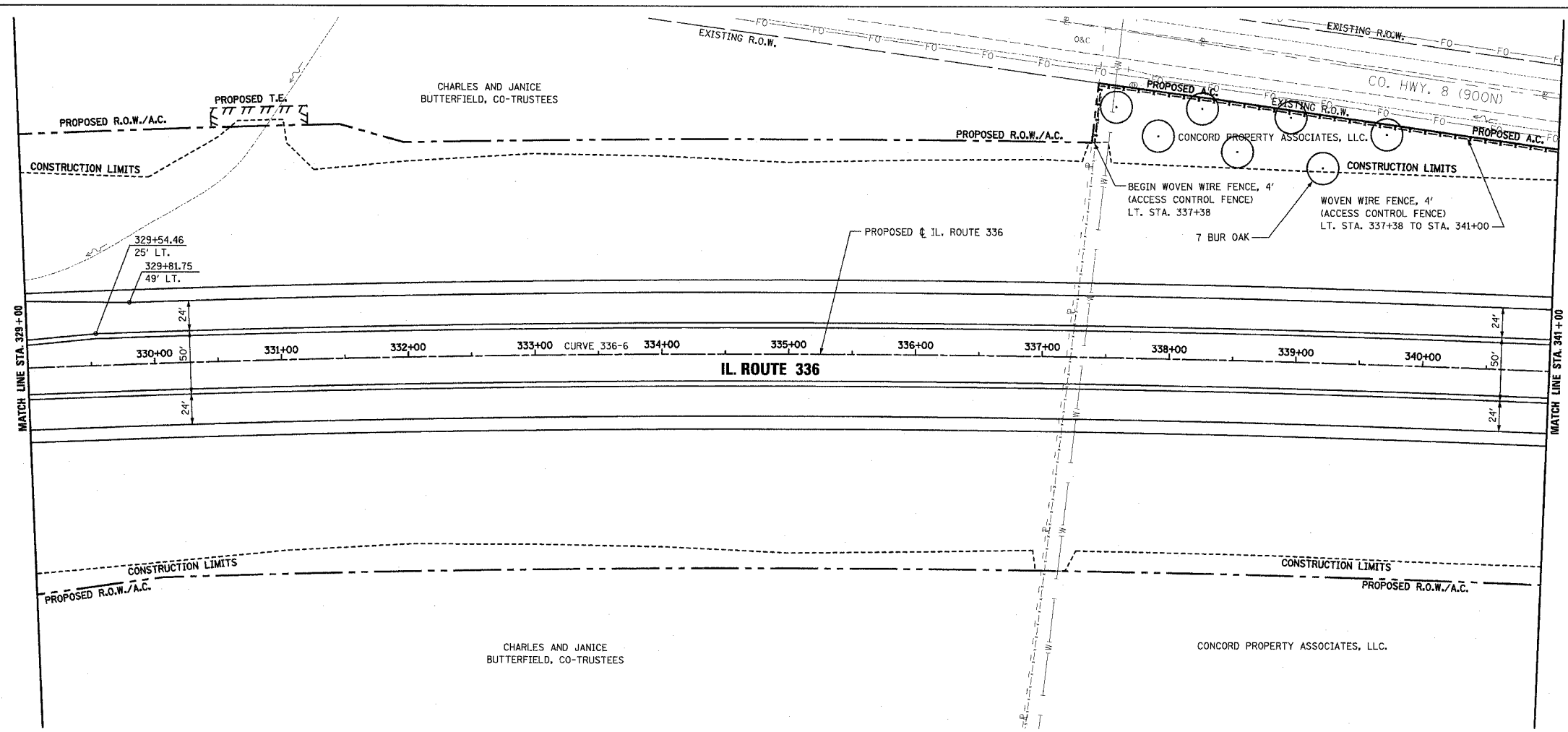


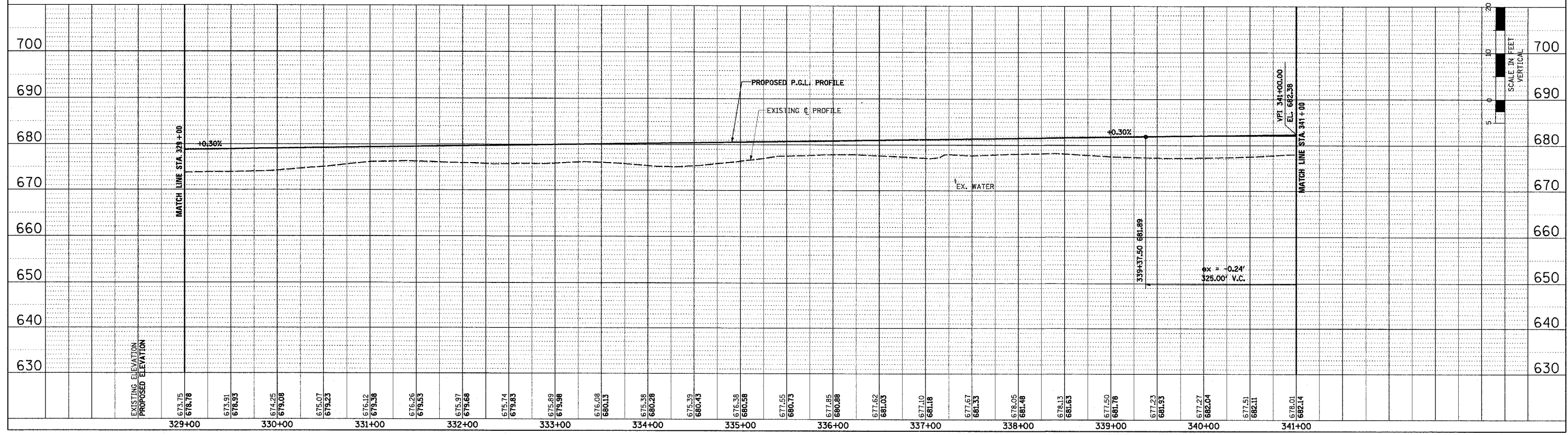
F.A.P. RTE.	SECTION	COUNTY	TOTAL SHEETS	SHEET NO.
315	55-2	McDONOUGH	1025	144
STA. 329+00		TO STA. 341+00		
FED. ROAD DIST. NO. 4 ILLINOIS FED. AID PROJECT				

PROPOSED CURVE 336-6 DATA
P.I. STA. = 339+78.20
 $\Delta = 13^\circ 25' 48.37''$ (RT)
R = 14,700'
T = 1,730.77'
L = 3,445.61'
E = 101.54'
P.C.C. STA. = 322+47.43
P.T. STA. = 356+93.10



PLAN	BY	DATE
DESIGNED		
PLOTTED		
ALIGNMENT CHECKED		
NOTE BOOK NO.		
ADD FILE NAME		

PROFILE	BY	DATE
DESIGNED		
PLOTTED		
GRADES CHECKED		
STRUCTURE NOTATIONS OK'D		
NOTE BOOK NO.		



ROADWAY PLAN AND PROFILE - IL. ROUTE 336 - STA. 329+00 TO STA. 341+00

3/28/15 5:07 4/7/2016 7:34:11 AM