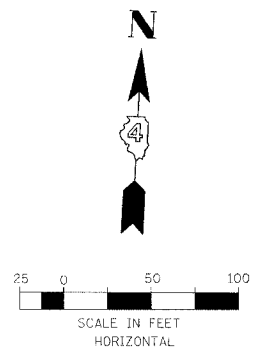
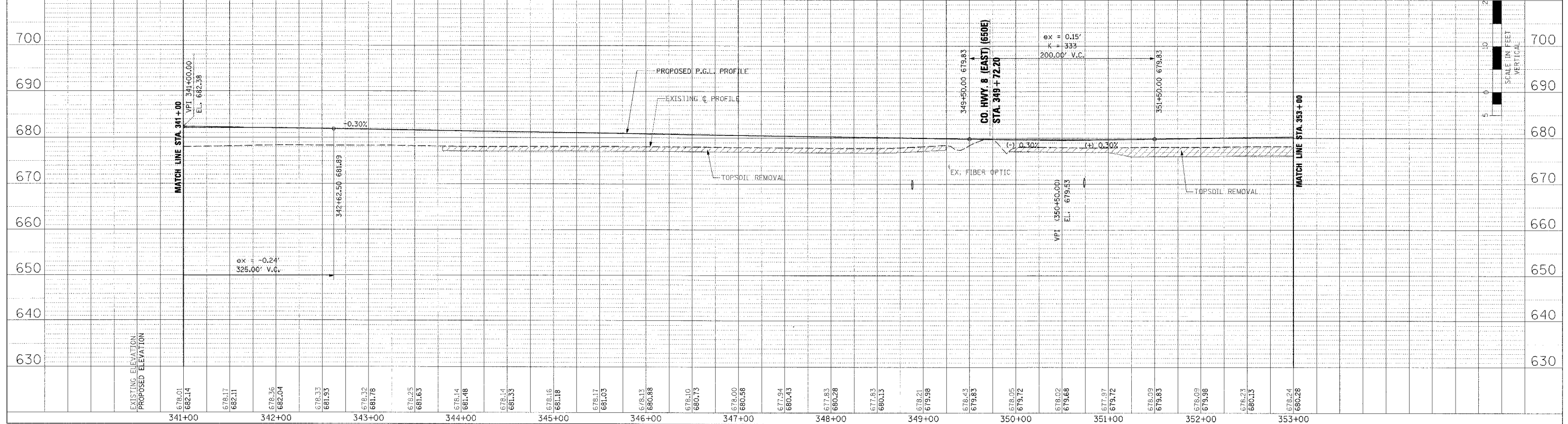
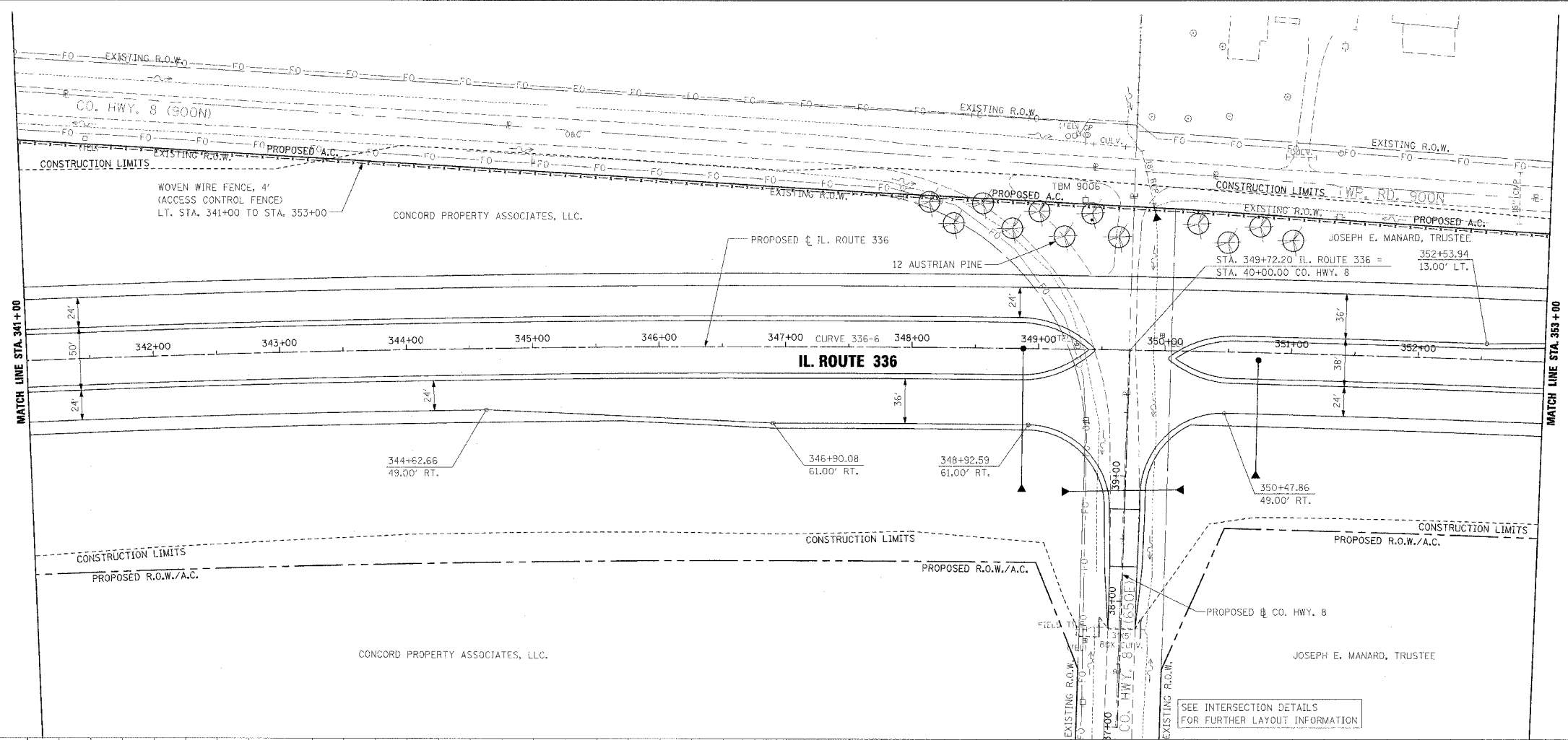


F.A.P. RITE	SECTION	COUNTY	TOTAL SHEETS	SHEET NO.
315	55-2	McDONOUGH	1025	145
STA. 341+00		TO STA. 353+00		
FED. ROAD DIST. NO. 4		ILLINOIS FED. AID PROJECT		

PROPOSED CURVE 336-6 DATA
 P.I. STA. = 339+78.20
 $\Delta = 13^\circ 25' 48.37''$ (RT)
 $R = 14,700'$
 $T = 1,730.77'$
 $L = 3,445.67'$
 $E = 101.54'$
 P.C.C. STA. = 322+47.43
 P.T. STA. = 356+93.10

PLAN	DATE	BY
REVISION		
NOTES		
NO.		

PROFILE	DATE	BY
REVISION		
NOTES		
NO.		



ROADWAY PLAN AND PROFILE - IL. ROUTE 336 - STA. 341+00 TO STA. 353+00