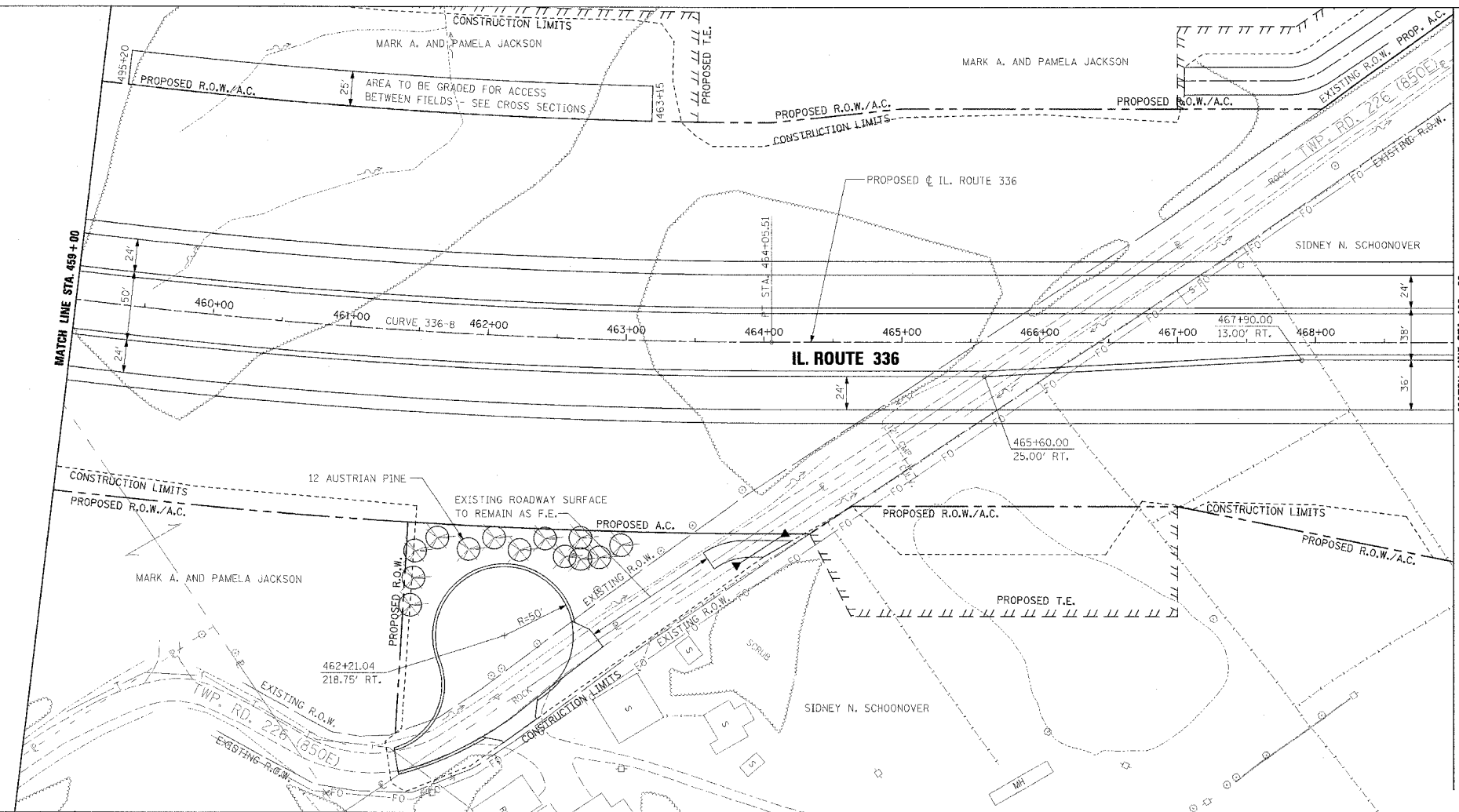


F.A.P. RTE.	SECTION	COUNTY	TOTAL SHEETS	SHEET NO.
315	55-2	McDONOUGH	1025	155
STA. 459+00		TO STA. 469+00		
FED. ROAD DIST. NO. 4 ILLINOIS		FED. AID PROJECT		

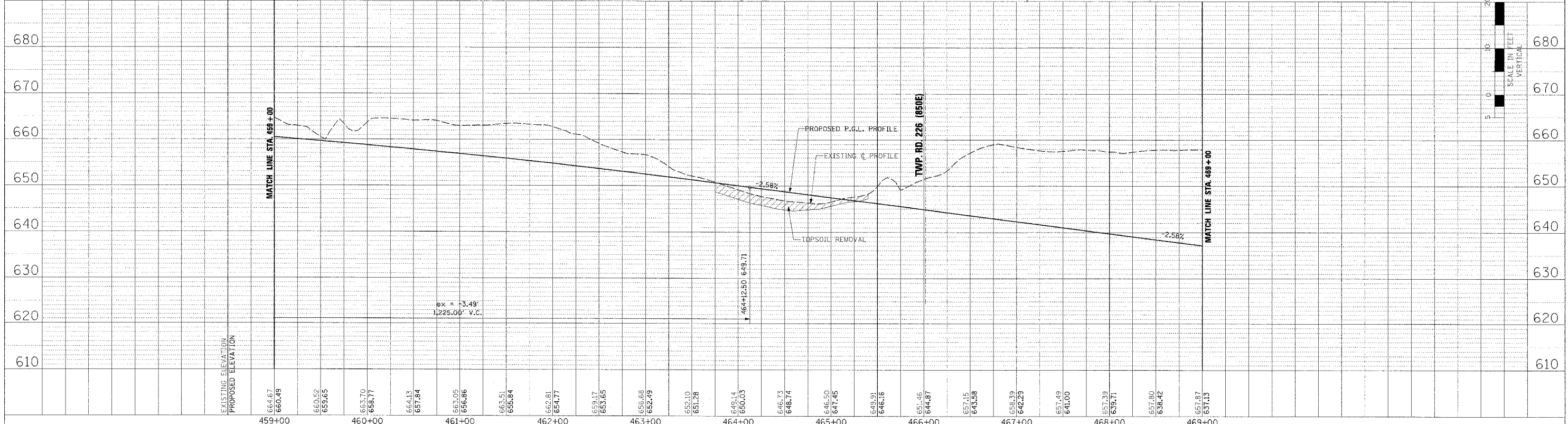
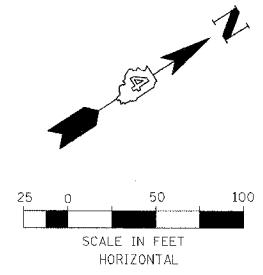
PROPOSED CURVE 336-8 DATA  
P.I. STA. = 451+74.90  
 $\Delta = 34^\circ 14' 13.54''$  (L.T.)  
R = 4,250'  
T = 1,308.98'  
L = 2,539.59'  
E = 197.01'  
S.E. = 4.20%  
TRANSITION IN = 435+85 TO 440+10  
TRANSITION OUT = 462+65 TO 466+90  
P.C. STA. = 438+65.92  
P.T. STA. = 464+05.51

PLAN	DATE	BY
NO. _____	_____	_____
NO. _____	_____	_____
NO. _____	_____	_____

PROFILE	DATE	BY
NO. _____	_____	_____
NO. _____	_____	_____
NO. _____	_____	_____



SEE INTERSECTION DETAILS FOR FURTHER LAYOUT INFORMATION



ROADWAY PLAN AND PROFILE - IL. ROUTE 336 - STA. 459+00 TO STA. 469+00