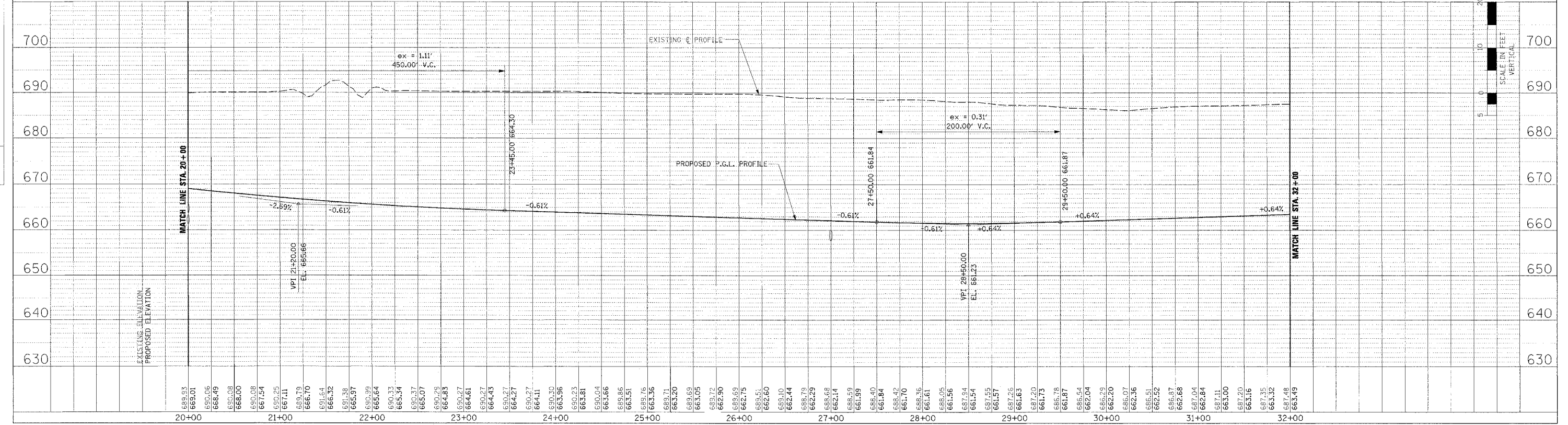
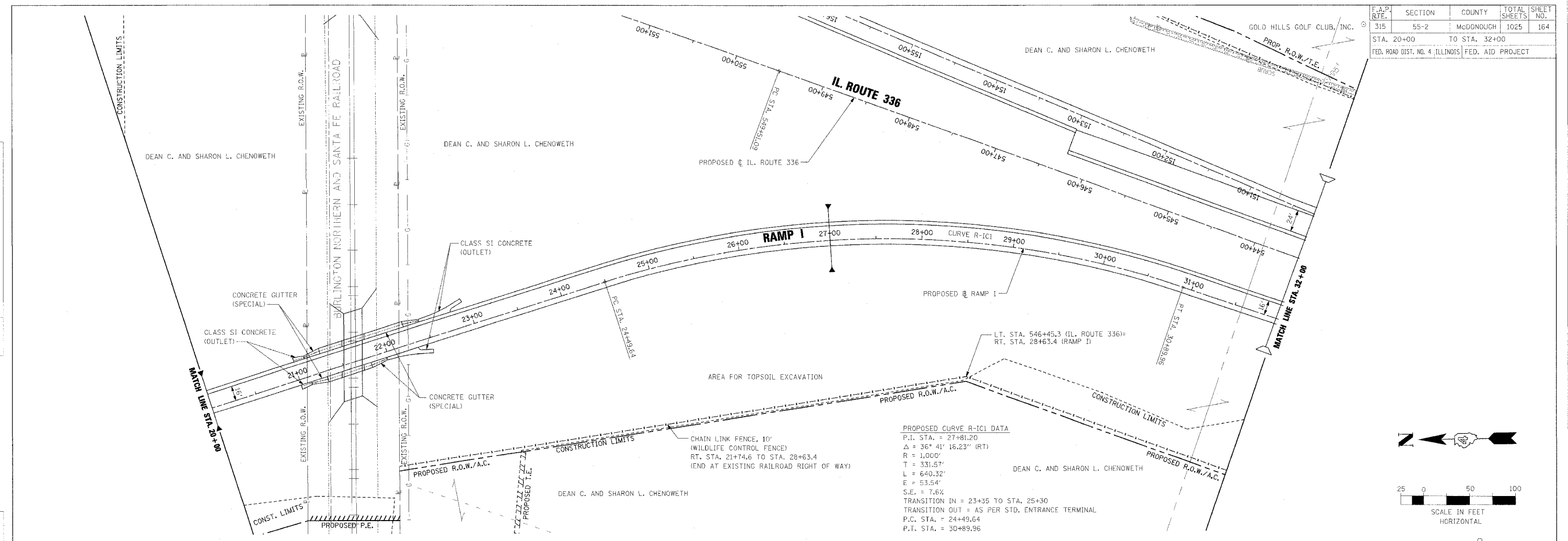


F.A.P. RTE.	SECTION	COUNTY	TOTAL SHEETS	SHEET NO.
315	55-2	MCDONOUGH	1025	164
STA. 20+00		TO STA. 32+00		
FED. ROAD DIST. NO. 4 ILLINOIS		FED. AID PROJECT		

PLAN	DATE
SUBMITTED	BY
NOTED	BY
APPROVED	BY
DATE	DATE

PROF. H.E. SWANBY	DATE
PLANNED	BY
NOTED	BY
APPROVED	BY
DATE	DATE



ROADWAY PLAN AND PROFILE - RAMP I - STA. 20+00 TO STA. 32+00