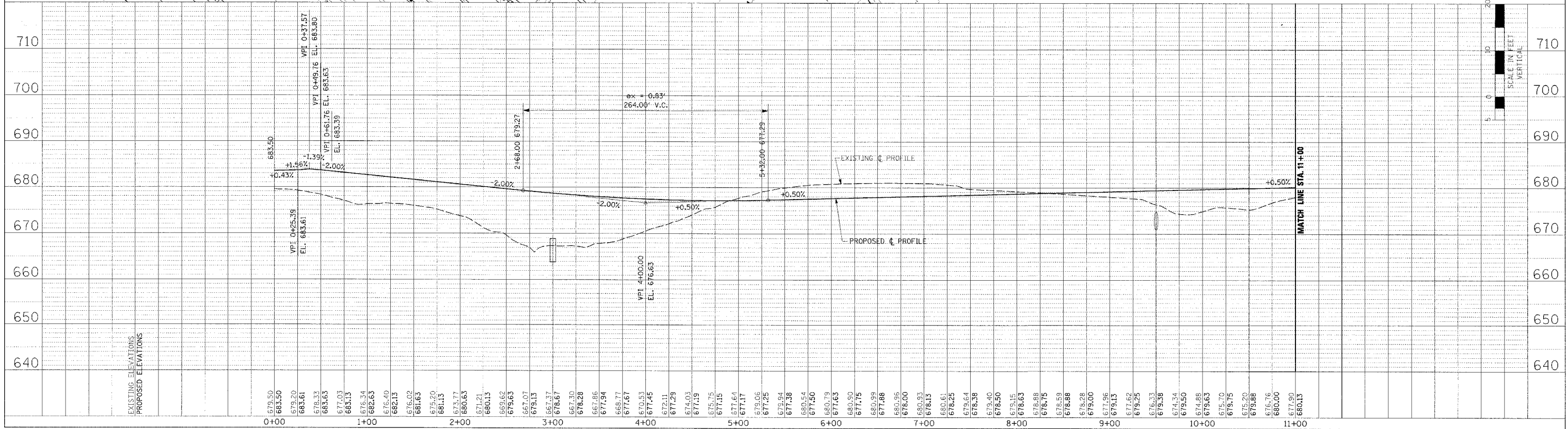
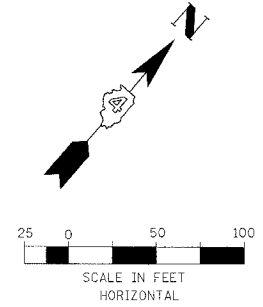
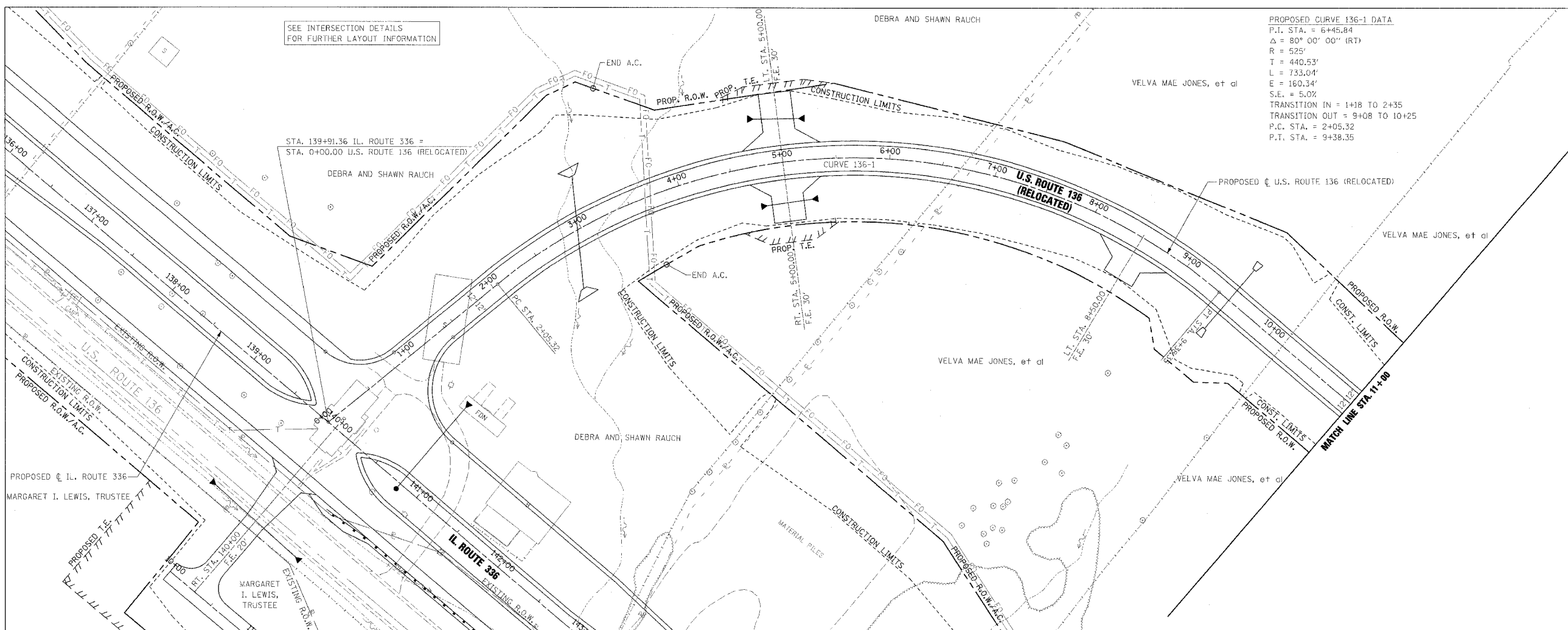


F.A.P. RTL	SECTION	COUNTY	TOTAL SHEETS	SHEET NO.
315	55-2	McDONOUGH	1025	169
STA. 0+00		TO STA. 11+00		
FED. ROAD DIST. NO. 4 ILLINOIS FED. AID PROJECT				

PROPOSED CURVE 136-1 DATA
 P.I. STA. = 6+45.84
 $\Delta = 80^{\circ} 00' 00''$ (RT)
 R = 525'
 T = 440.53'
 L = 733.04'
 E = 160.34'
 S.E. = 5.0%
 TRANSITION IN = 1+18 TO 2+35
 TRANSITION OUT = 9+08 TO 10+25
 P.C. STA. = 2+05.32
 P.T. STA. = 9+38.35



ROADWAY PLAN AND PROFILE - U.S. ROUTE 136 (RELOCATED) - STA. 0+00 TO STA. 11+00

DATE	BY	REVISION
		PLANNING
		DESIGN
		CONSTRUCTION

DATE	BY	REVISION
		PROFILES
		STRUCTURE
		UTILITY