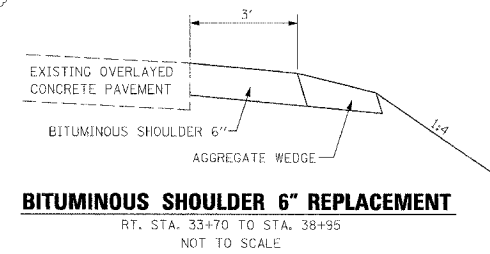
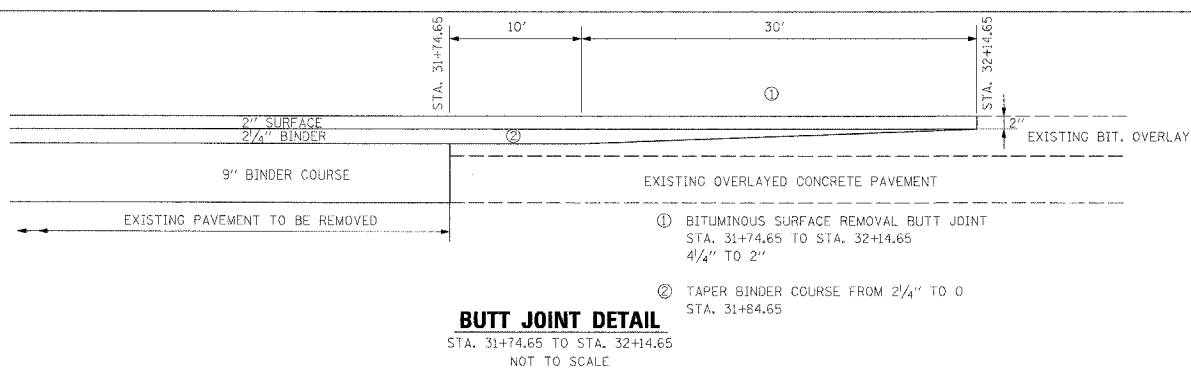


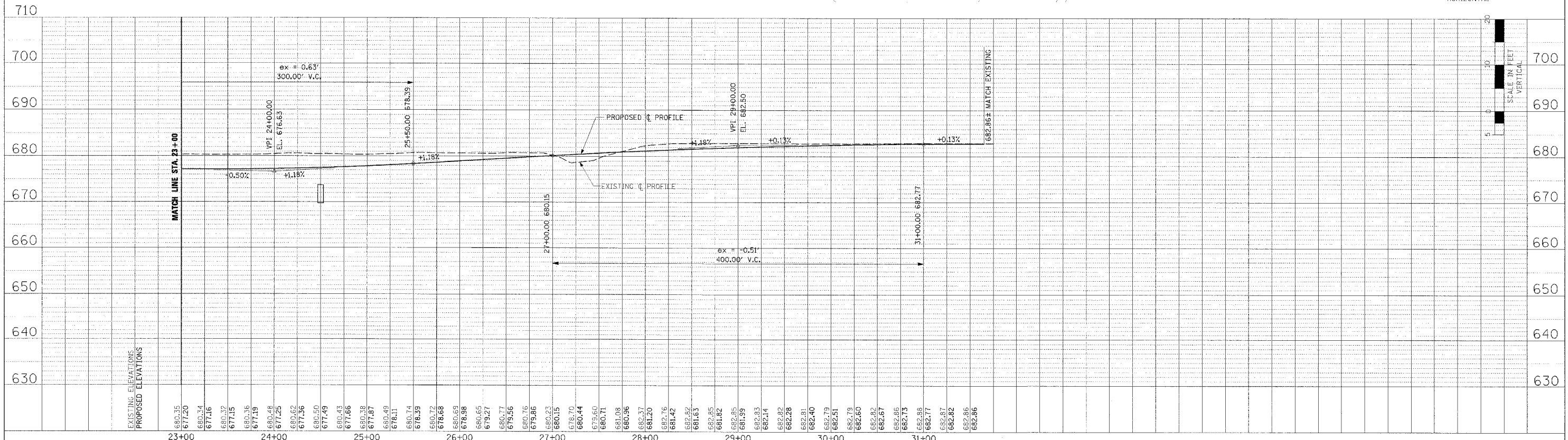
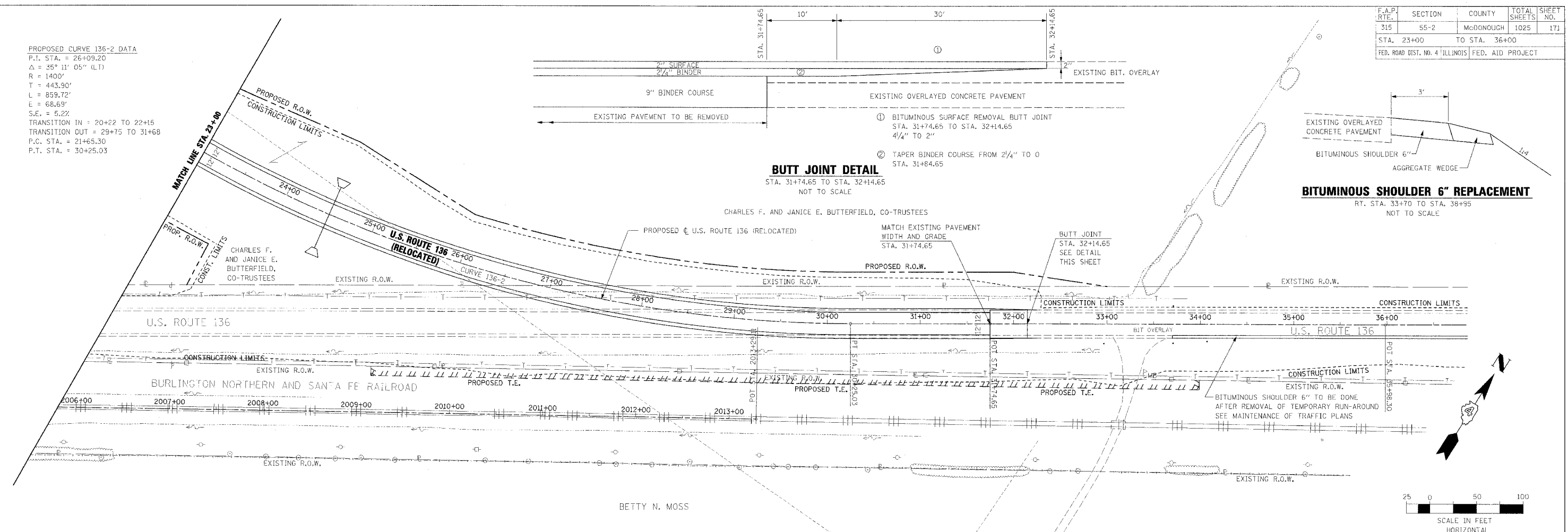
F.A.P. R.T.E.	SECTION	COUNTY	TOTAL SHEETS	SHEET NO.
315	55-2	MCDONOUGH	1025	171
STA. 23+00 TO STA. 36+00				
FED. ROAD DIST. NO. 4 ILLINOIS FED. AID PROJECT				

PROPOSED CURVE 136-2 DATA
P.I. STA. = 26+09.20
 $\Delta = 35^\circ 11' 05''$ (LT)
R = 1400'
T = 443.90'
L = 859.72'
E = 68.69'
S.E. = 5.2%
TRANSITION IN = 20+22 TO 22+15
TRANSITION OUT = 29+75 TO 31+68
P.C. STA. = 21+65.30
P.T. STA. = 30+25.03



DATE	BY	REVISION

DATE	BY	REVISION



ROADWAY PLAN AND PROFILE - U.S. ROUTE 136 (RELOCATED) - STA. 23+00 TO STA. 36+00