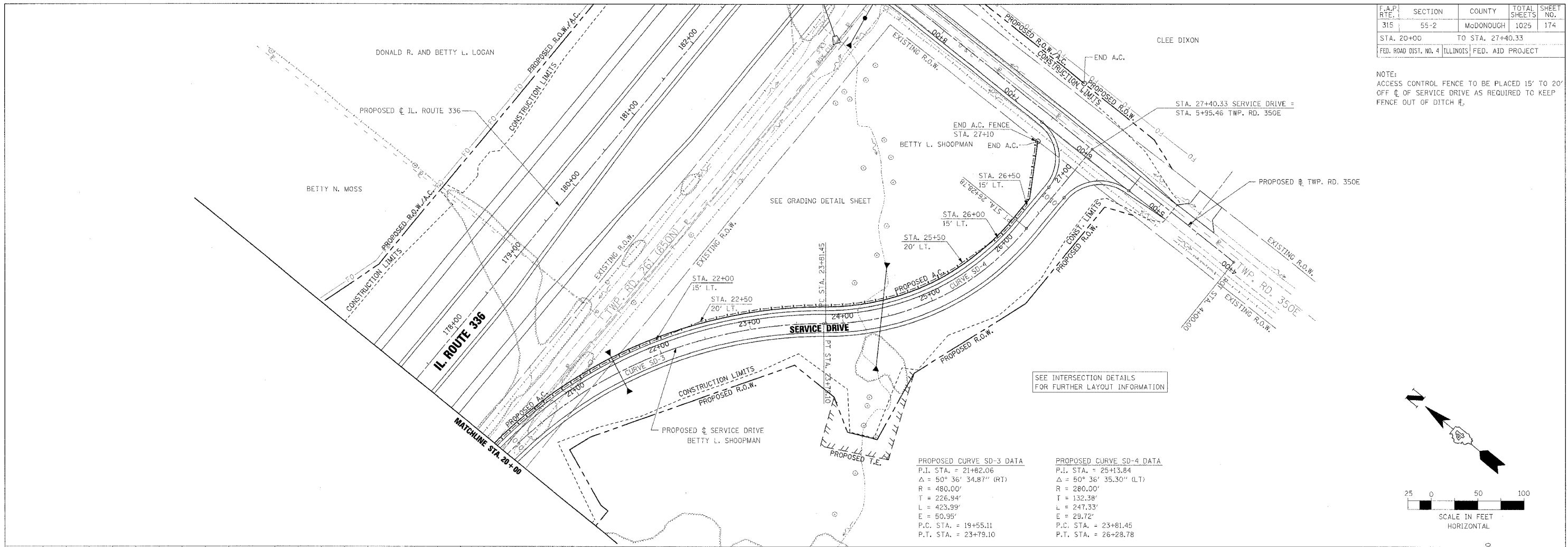


F.A.P. RTE.	SECTION	COUNTY	TOTAL SHEETS	SHEET NO.
315	55-2	McDONOUGH	1025	174
STA. 20+00		TO STA. 27+40.33		
FED. ROAD DIST. NO. 4 ILLINOIS		FED. AID PROJECT		

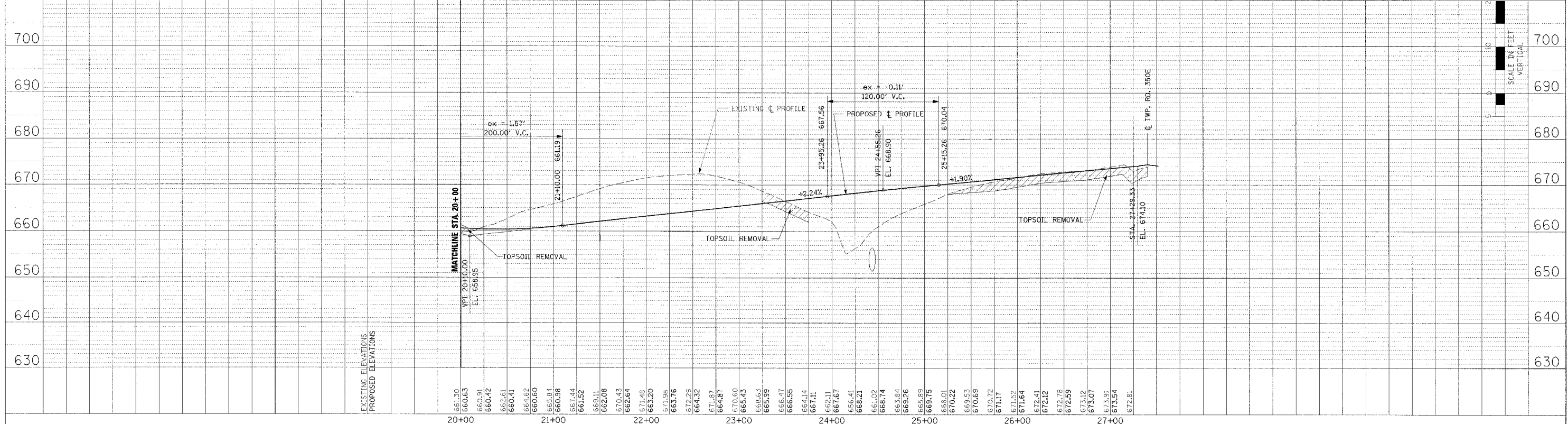
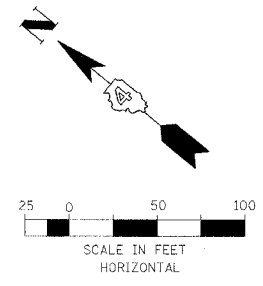
NOTE:
ACCESS CONTROL FENCE TO BE PLACED 15' TO 20'
OFF \bar{C} OF SERVICE DRIVE AS REQUIRED TO KEEP
FENCE OUT OF DITCH \bar{r} .

PLAN	DATE
BY	
CHECKED	
DATE	
NO.	
FILE NAME	

PROFILE	DATE
BY	
CHECKED	
DATE	
NO.	
FILE NAME	



PROPOSED CURVE SD-3 DATA P.I. STA. = 21+82.06 $\Delta = 50^\circ 36' 34.87''$ (RT) $R = 480.00'$ $T = 226.94'$ $L = 423.39'$ $E = 50.95'$ P.C. STA. = 19+55.11 P.T. STA. = 23+79.10	PROPOSED CURVE SD-4 DATA P.I. STA. = 25+13.84 $\Delta = 50^\circ 36' 35.30''$ (LT) $R = 280.00'$ $T = 132.38'$ $L = 247.33'$ $E = 29.72'$ P.C. STA. = 23+81.45 P.T. STA. = 26+28.78
--	--



ROADWAY PLAN AND PROFILE - SERVICE DRIVE - STA. 20+00 TO STA. 27+40.33