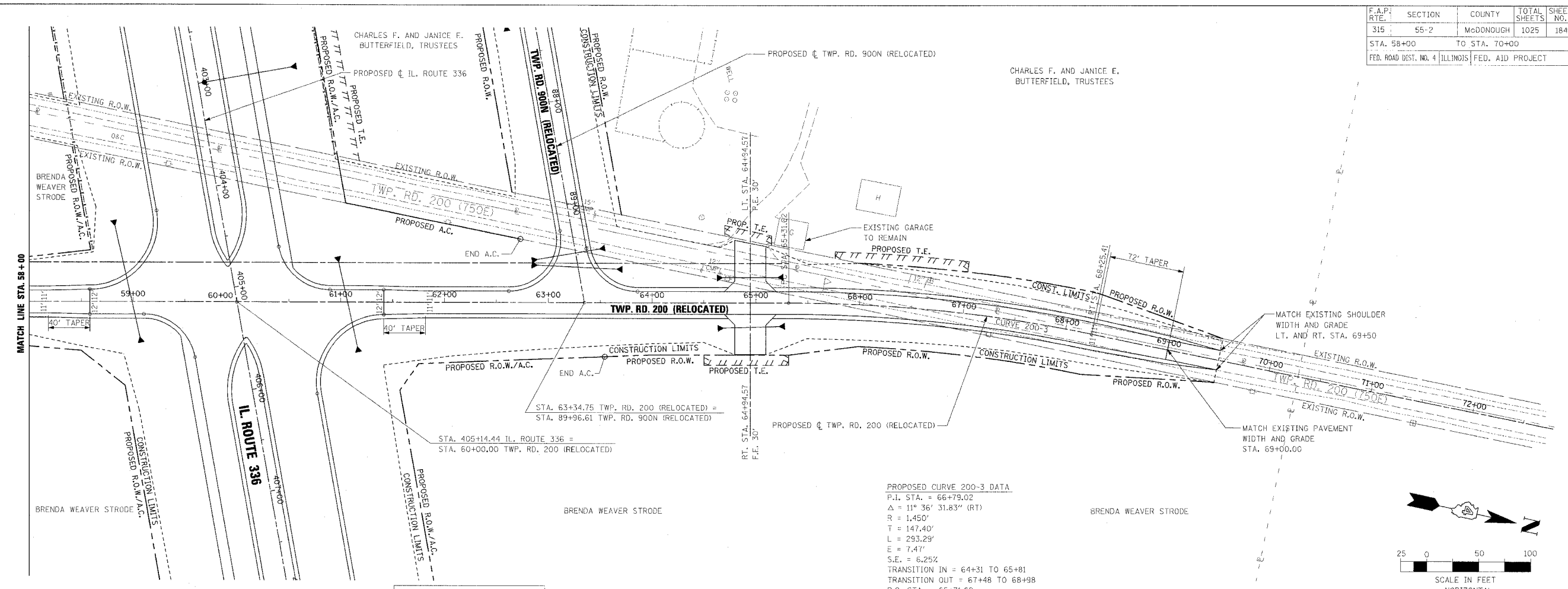


F.A.P. RTE.	SECTION	COUNTY	TOTAL SHEETS	SHEET NO.
315	55-2	McDONOUGH	1025	184
STA. 58+00		TO STA. 70+00		
FED. ROAD DIST. NO. 4 ILLINOIS FED. AID PROJECT				

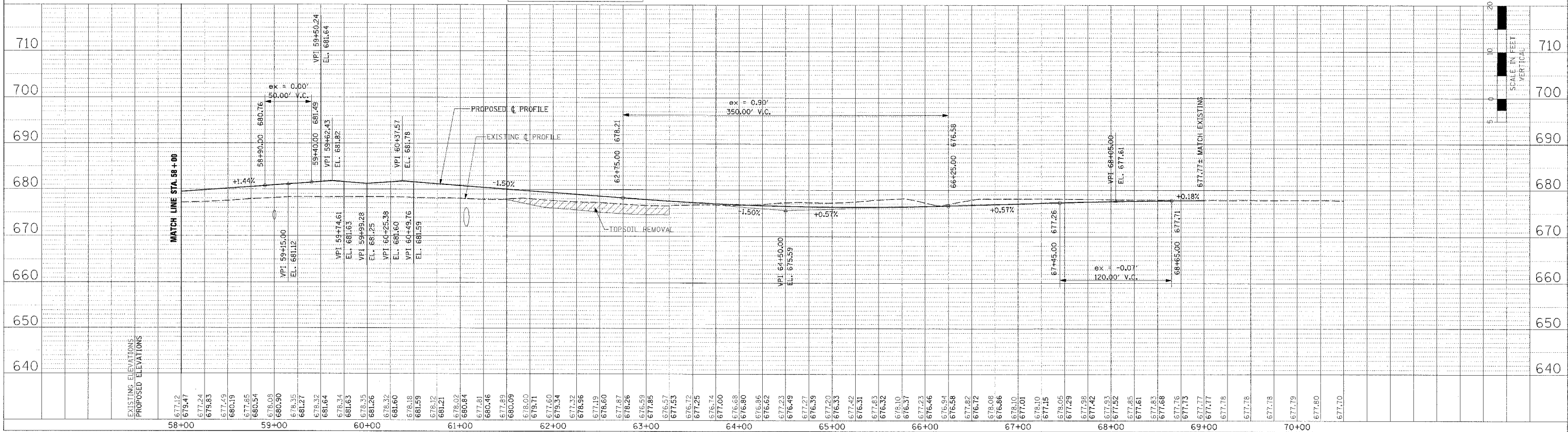
PLAN	DATE
BY	
CHECKED	
DATE	

PROFILE	DATE
BY	
CHECKED	
DATE	



PROPOSED CURVE 200-3 DATA
 P.I. STA. = 66+79.02
 $\Delta = 11^\circ 36' 31.83''$ (RT)
 $R = 1,450'$
 $T = 147.40'$
 $L = 293.29'$
 $E = 7.47'$
 $S.E. = 6.25\%$
 TRANSITION IN = 64+31 TO 65+81
 TRANSITION OUT = 67+48 TO 68+98
 P.C. STA. = 65+31.62
 P.T. STA. = 68+25.41

SEE INTERSECTION DETAILS FOR FURTHER LAYOUT INFORMATION



ROADWAY PLAN AND PROFILE - TWP. RD. 200 (RELOCATED) - STA. 58+00 TO STA. 70+00