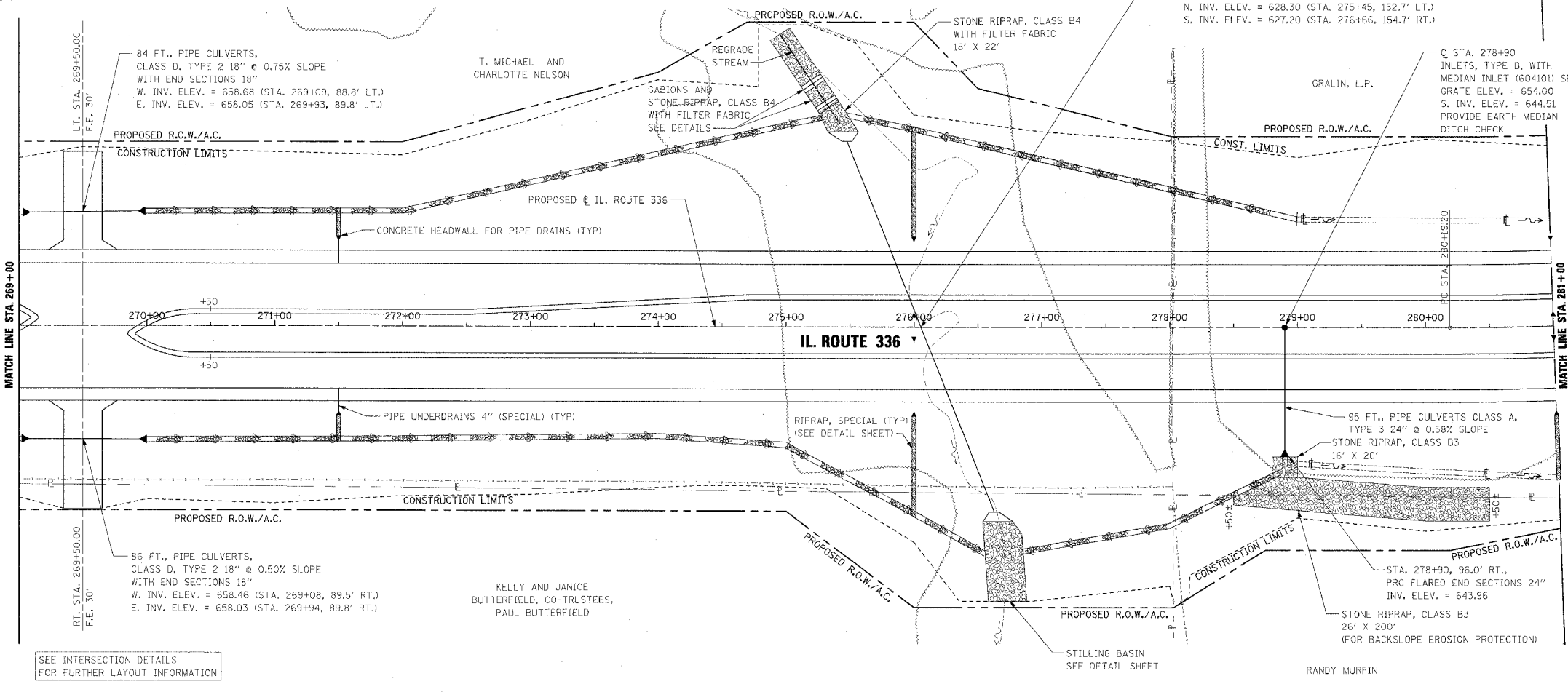


PERMANENT EROSION CONTROL LEGEND

AGGREGATE DITCH (TO BE PLACED UPON COMPLETION OF DITCH CUT)

F.A.P. RTE.	SECTION	COUNTY	TOTAL SHEETS	SHEET NO.
315	55-2	McDONOUGH	1025	202
STA. 269+00		TO STA. 281+00		
FED. ROAD DIST. NO. 4 (ILLINOIS) FED. AID PROJECT				



PIPE UNDERDRAINS 4"

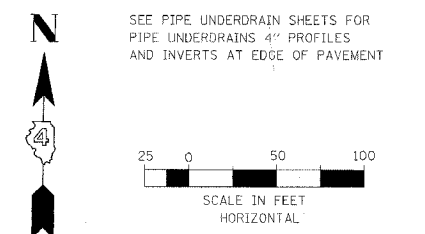
WB OUTSIDE EOP LT. STA. 269+00 TO STA. 281+00
 WB INSIDE EOP LT. STA. 270+50 TO STA. 281+00
 EB INSIDE EOP RT. STA. 270+50 TO STA. 281+00
 EB OUTSIDE EOP RT. STA. 269+00 TO STA. 281+00

PIPE UNDERDRAINS 4" (SPECIAL)

WB OUTSIDE LT. STA. 271+50, 18' @ 1.00% SLOPE
 WB INSIDE LT. STA. 276+00, 18' @ 1.00% SLOPE
 WB OUTSIDE LT. STA. 281+00, 18' @ 1.00% SLOPE
 WB INSIDE LT. STA. 276+00, 14' @ 1.00% SLOPE
 WB INSIDE LT. STA. 281+00, 14' @ 1.00% SLOPE
 EB INSIDE RT. STA. 276+00, 14' @ 1.00% SLOPE
 EB INSIDE RT. STA. 281+00, 14' @ 1.00% SLOPE
 EB OUTSIDE RT. STA. 271+50, 18' @ 1.00% SLOPE
 EB OUTSIDE RT. STA. 276+00, 18' @ 1.00% SLOPE
 EB OUTSIDE RT. STA. 281+00, 18' @ 1.00% SLOPE

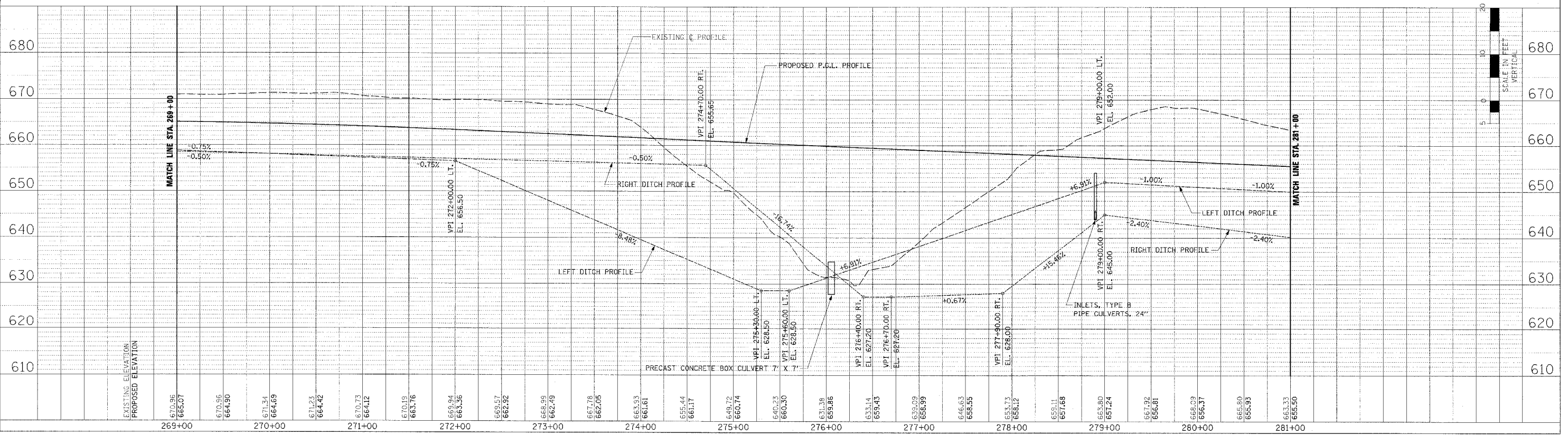
CONCRETE HEADWALL FOR PIPE DRAINS

WB OUTSIDE STA. 271+50, 67' LT., INV. ELEV. = 661.50
 WB OUTSIDE STA. 276+00, 67' LT., INV. ELEV. = 657.68
 WB OUTSIDE STA. 281+00, 67' LT., INV. ELEV. = 652.18
 WB INSIDE STA. 276+00, 11' LT., INV. ELEV. = 657.72
 WB INSIDE STA. 281+00, 14' LT., INV. ELEV. = 653.35
 EB INSIDE STA. 276+00, 11' RT., INV. ELEV. = 657.72
 EB INSIDE STA. 281+00, 14' RT., INV. ELEV. = 653.35
 EB OUTSIDE STA. 271+50, 67' RT., INV. ELEV. = 661.50
 EB OUTSIDE STA. 276+00, 67' RT., INV. ELEV. = 657.68
 EB OUTSIDE STA. 281+00, 67' RT., INV. ELEV. = 654.45



PLAN	REVISION	DATE
NO.	NO.	

PROF. FILE	REVISION	DATE
NO.	NO.	



DRAINAGE PLAN AND PROFILE - IL. ROUTE 336 - STA. 269+00 TO STA. 281+00