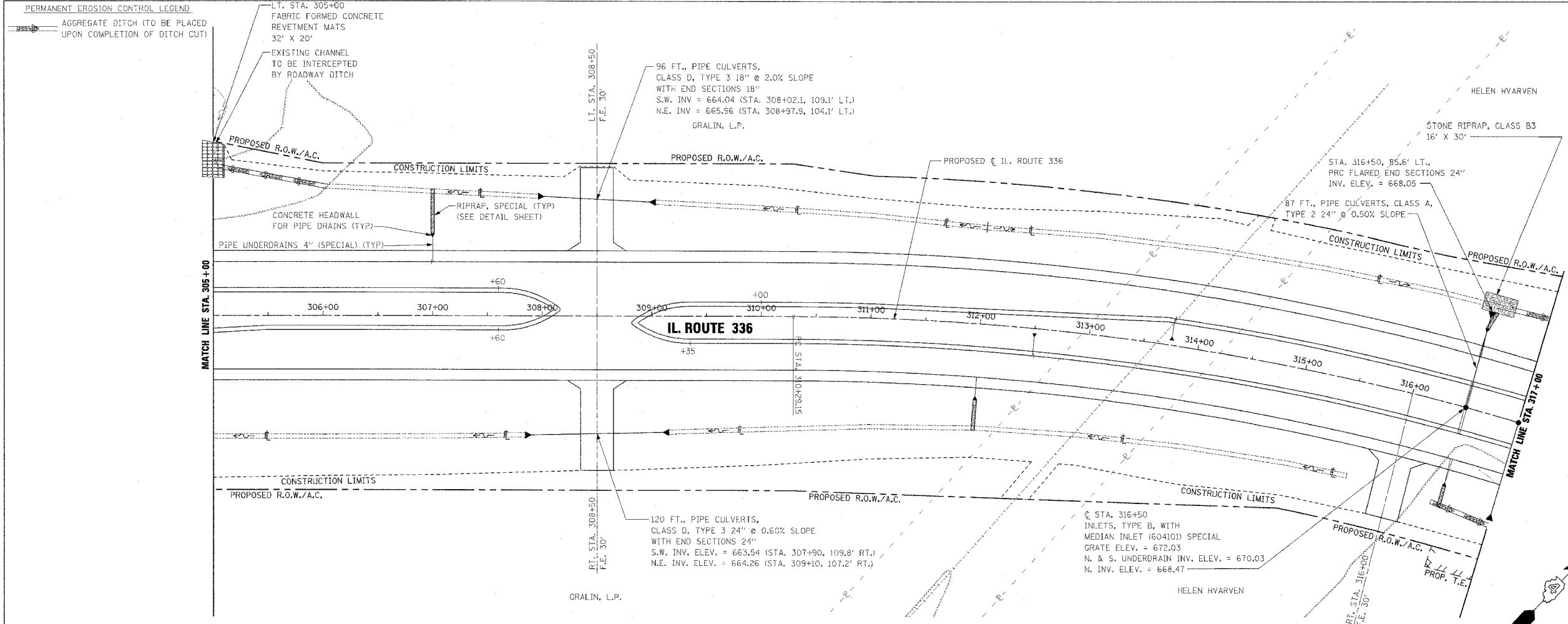


F.A.P. RTE.	SECTION	COUNTY	TOTAL SHEETS	SHEET NO.
315	55-2	McDONOUGH	1025	205
STA. 305+00		TO STA. 317+00		
FED. ROAD DIST. NO. 4		ILLINOIS FED. AID PROJECT		



PIPE UNDERDRAINS 4"

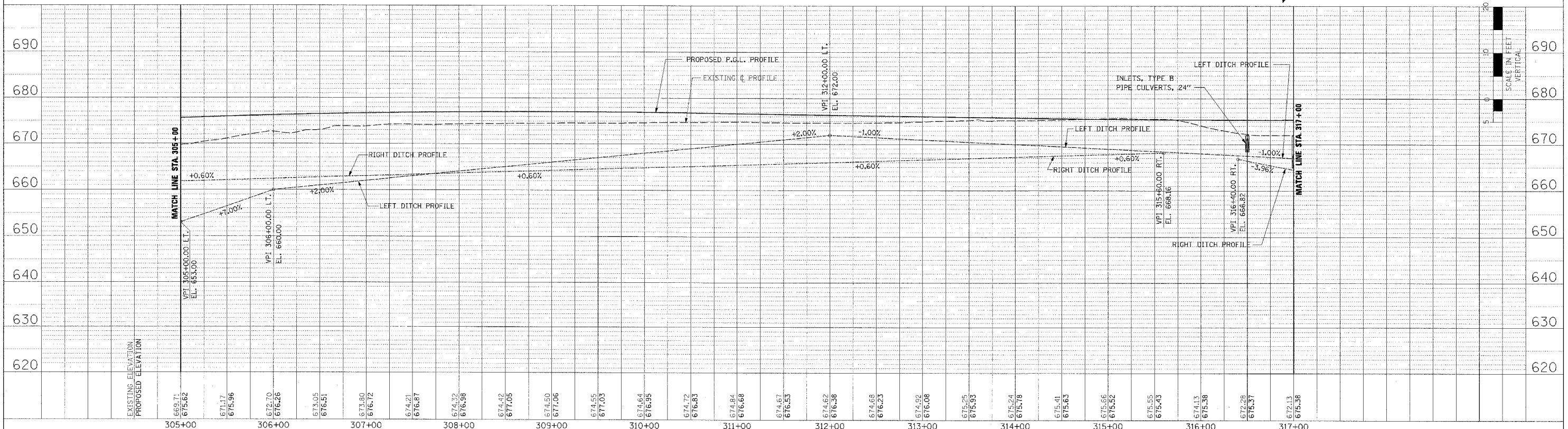
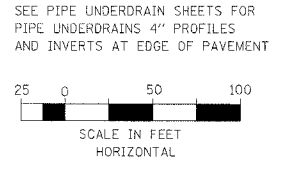
WB OUTSIDE EOP LT. STA. 305+00 TO STA. 307+00
 WB OUTSIDE EOP LT. STA. 307+00 TO STA. 316+50
 WB OUTSIDE EOP LT. STA. 316+50 TO STA. 317+00
 WB INSIDE EOP LT. STA. 305+00 TO STA. 307+60
 WB INSIDE EOP LT. STA. 310+00 TO STA. 313+75
 WB INSIDE EOP LT. STA. 313+75 TO STA. 316+50
 WB INSIDE EOP LT. STA. 316+50 TO STA. 317+00
 EB INSIDE EOP RT. STA. 305+00 TO STA. 307+60
 EB INSIDE EOP RT. STA. 309+35 TO STA. 312+50
 EB INSIDE EOP RT. STA. 312+50 TO STA. 316+50
 EB INSIDE EOP RT. STA. 316+50 TO STA. 317+00
 EB OUTSIDE EOP RT. STA. 305+00 TO STA. 316+50
 EB OUTSIDE EOP RT. STA. 316+50 TO STA. 317+00

PIPE UNDERDRAINS 4" (SPECIAL)

WB OUTSIDE LT. STA. 307+00, 22' @ 1.00% SLOPE
 WB OUTSIDE LT. STA. 316+50 (W. PIPE), 24' @ 1.00% SLOPE
 WB OUTSIDE LT. STA. 316+50 (E. PIPE), 24' @ 1.63% SLOPE
 WB INSIDE LT. STA. 313+75, 17' @ 1.00% SLOPE
 WB INSIDE LT. STA. 316+50, 25' @ 1.20% SLOPE (2 PIPES)
 EB INSIDE RT. STA. 312+50, 17' @ 1.00% SLOPE
 EB INSIDE RT. STA. 316+50, 25' @ 1.20% SLOPE (2 PIPES)
 EB OUTSIDE RT. STA. 312+00, 18' @ 1.00% SLOPE
 EB OUTSIDE RT. STA. 316+50 (W. PIPE), 23' @ 1.00% SLOPE
 EB OUTSIDE RT. STA. 316+50 (E. PIPE), 23' @ 1.91% SLOPE

CONCRETE HEADWALL FOR PIPE DRAINS

WB OUTSIDE STA. 307+00, 71' LT., INV. ELEV. = 673.81
 WB OUTSIDE STA. 316+50, 73' LT., INV. ELEV. = 673.59
 WB INSIDE STA. 313+75, 8' LT., INV. ELEV. = 673.08
 EB INSIDE STA. 312+50, 8' RT., INV. ELEV. = 673.49
 EB OUTSIDE STA. 312+00, 67' RT., INV. ELEV. = 672.98
 EB OUTSIDE STA. 316+50, 72' RT., INV. ELEV. = 670.93



DRAINAGE PLAN AND PROFILE - IL. ROUTE 336 - STA. 305+00 TO STA. 317+00