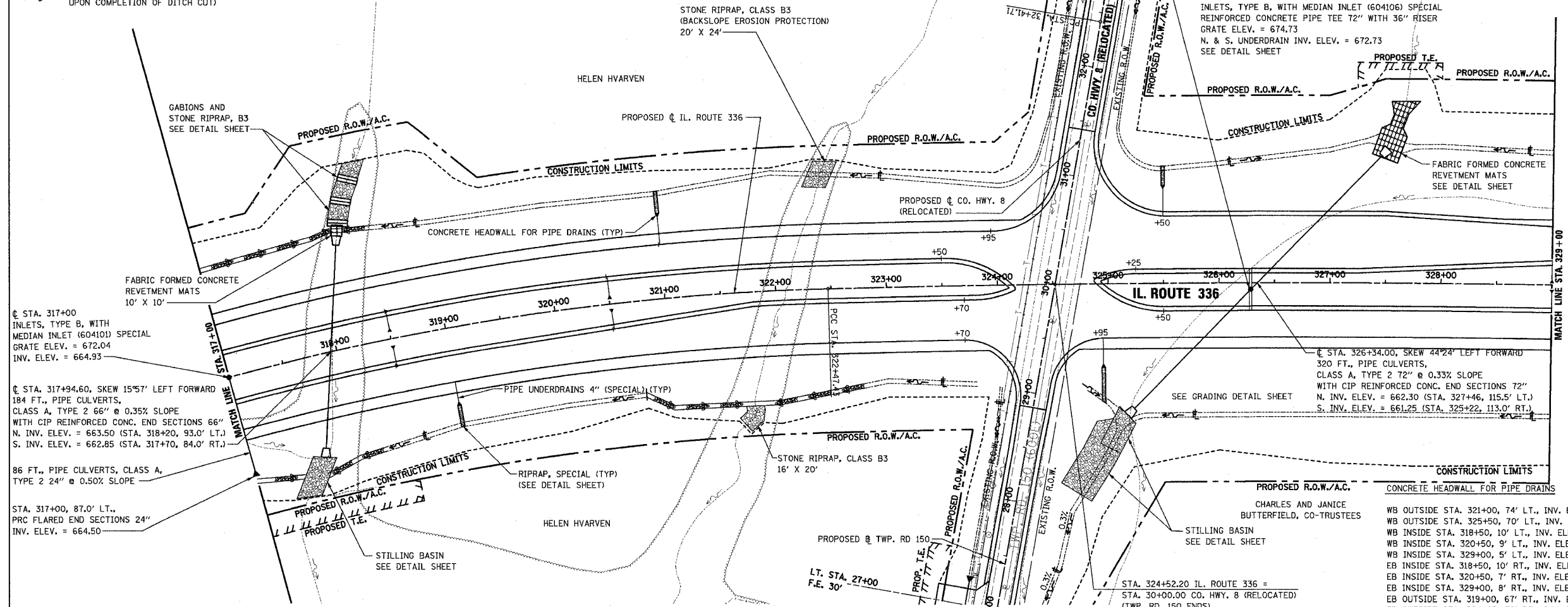


**PERMANENT EROSION CONTROL LEGEND**  
 AGGREGATE DITCH (TO BE PLACED UPON COMPLETION OF DITCH CUT)

F.A.P. RTE.	SECTION	COUNTY	TOTAL SHEETS	SHEET NO.
315	55-2	McDONOUGH	1025	206
STA. 317+00 TO STA. 329+00				
FED. ROAD DIST. NO. 4 ILLINOIS FED. AID PROJECT				

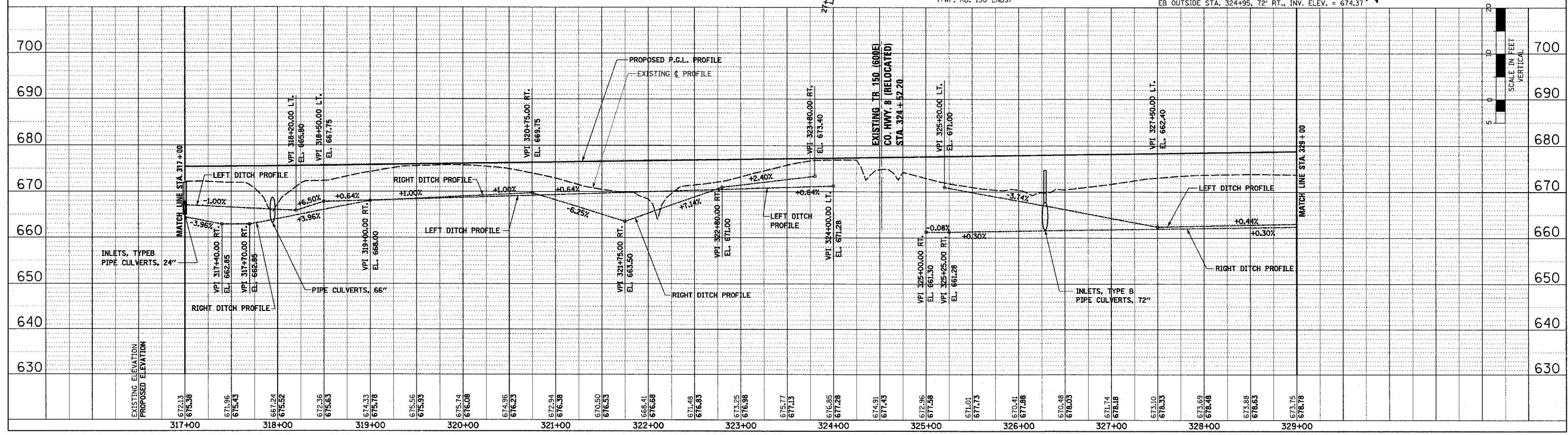


**PIPE UNDERDRAINS 4"**

WB OUTSIDE EOP LT. STA. 317+00 TO STA. 321+00
WB OUTSIDE EOP LT. STA. 321+00 TO STA. 323+95
WB OUTSIDE EOP LT. STA. 325+50 TO STA. 329+00
WB INSIDE EOP LT. STA. 317+00 TO STA. 318+50
WB INSIDE EOP LT. STA. 318+50 TO STA. 320+50
WB INSIDE EOP LT. STA. 320+50 TO STA. 323+50
WB INSIDE EOP LT. STA. 325+25 TO STA. 326+28.5
WB INSIDE EOP LT. STA. 326+28.5 TO STA. 329+00
EB INSIDE EOP RT. STA. 317+00 TO STA. 318+50
EB INSIDE EOP RT. STA. 318+50 TO STA. 320+50
EB INSIDE EOP RT. STA. 320+50 TO STA. 323+70
EB INSIDE EOP RT. STA. 325+50 TO STA. 326+28.5
EB INSIDE EOP RT. STA. 326+28.5 TO STA. 329+00
EB OUTSIDE EOP RT. STA. 317+00 TO STA. 323+70
EB OUTSIDE EOP RT. STA. 324+95 TO STA. 329+00

**PIPE UNDERDRAINS 4" (SPECIAL)**

WB OUTSIDE LT. STA. 321+00, 25' @ 1.00% SLOPE
WB OUTSIDE LT. STA. 325+50, 21' @ 1.00% SLOPE
WB INSIDE LT. STA. 318+50, 15' @ 1.00% SLOPE
WB INSIDE LT. STA. 320+50, 16' @ 1.00% SLOPE
WB INSIDE LT. STA. 326+05 (W. PIPE), 18' @ 12.67% SLOPE
WB INSIDE LT. STA. 326+05 (E. PIPE), 18' @ 16.17% SLOPE
WB INSIDE LT. STA. 329+00, 17' @ 1.00% SLOPE
EB INSIDE RT. STA. 318+50, 15' @ 1.00% SLOPE
EB INSIDE RT. STA. 320+50, 17' @ 1.00% SLOPE
EB INSIDE RT. STA. 326+05 (W. PIPE), 18' @ 16.06% SLOPE
EB INSIDE RT. STA. 326+05 (E. PIPE), 18' @ 16.44% SLOPE
EB INSIDE RT. STA. 329+00, 17' @ 1.00% SLOPE
EB OUTSIDE RT. STA. 319+00, 18' @ 1.00% SLOPE
EB OUTSIDE RT. STA. 324+95, 23' @ 1.00% SLOPE



**DRAINAGE PLAN AND PROFILE - IL. ROUTE 336 - STA. 317+00 TO STA. 329+00**

PLAN	DATE	BY
REVISIONS		
NO.		
DATE		
BY		
REVISIONS		
NO.		
DATE		
BY		

PROFILE	DATE	BY
REVISIONS		
NO.		
DATE		
BY		
REVISIONS		
NO.		
DATE		
BY		

11/17/2006 09:05:26 AM