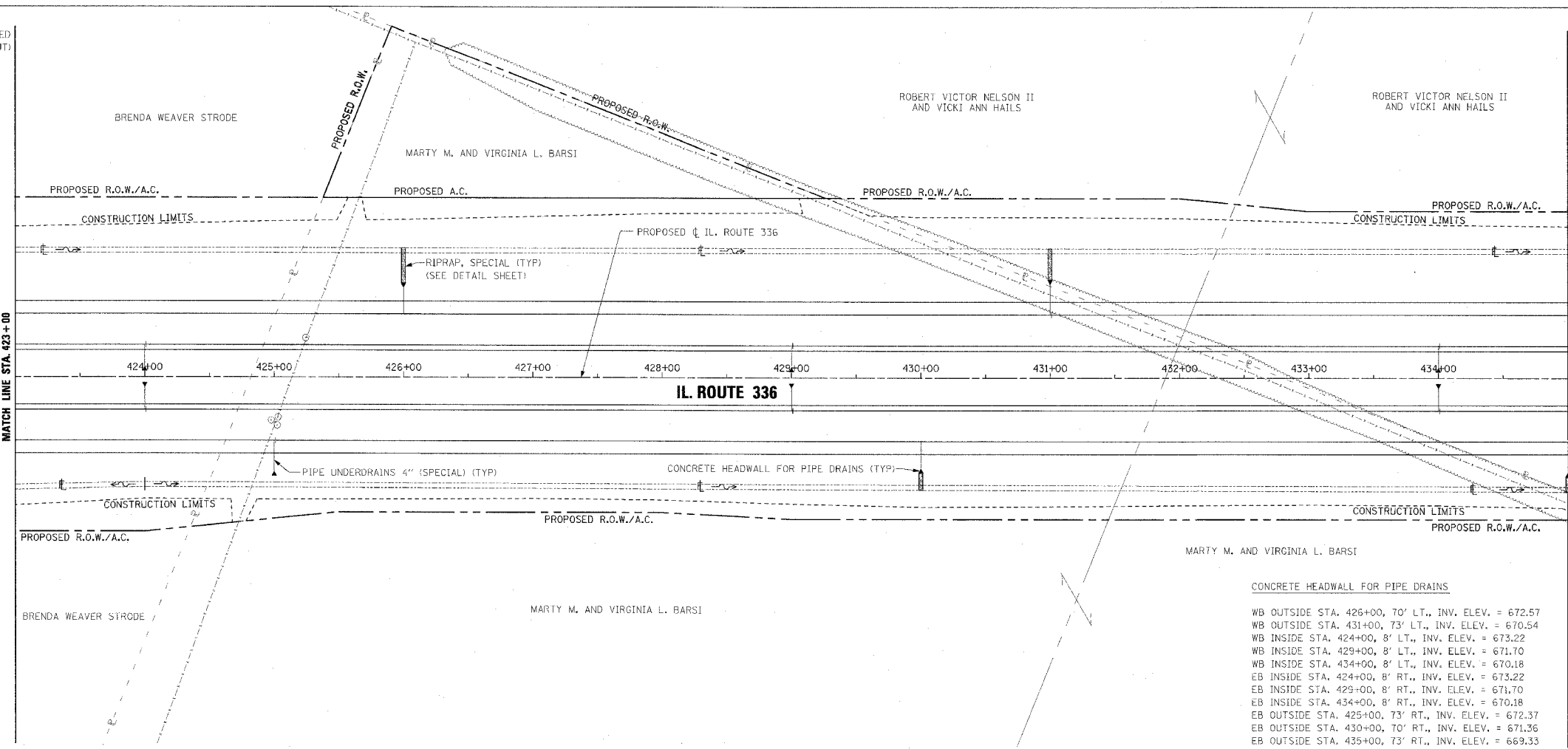


PERMANENT EROSION CONTROL LEGEND

AGGREGATE DITCH (TO BE PLACED UPON COMPLETION OF DITCH CUT)

F.A.P. RTE.	SECTION	COUNTY	TOTAL SHEETS	SHEET NO.
315	55-2	MCDONOUGH	1025	215
STA. 423+00		TO STA. 435+00		
FED. ROAD DIST. NO. 4 ILLINOIS FED. AID PROJECT				



PIPE UNDERDRAINS 4"

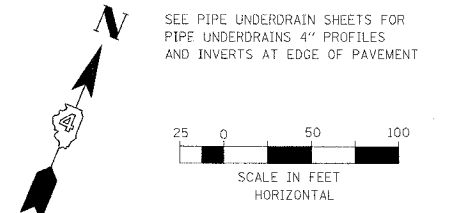
WB OUTSIDE EOP LT. STA. 423+00 TO STA. 431+00
 WB OUTSIDE EOP LT. STA. 431+00 TO STA. 435+00
 WB INSIDE EOP LT. STA. 423+00 TO STA. 424+00
 WB INSIDE EOP LT. STA. 424+00 TO STA. 429+00
 WB INSIDE EOP LT. STA. 429+00 TO STA. 434+00
 WB INSIDE EOP LT. STA. 434+00 TO STA. 435+00
 EB INSIDE EOP RT. STA. 423+00 TO STA. 424+00
 EB INSIDE EOP RT. STA. 424+00 TO STA. 429+00
 EB INSIDE EOP RT. STA. 429+00 TO STA. 434+00
 EB INSIDE EOP RT. STA. 434+00 TO STA. 435+00
 EB OUTSIDE EOP RT. STA. 423+00 TO STA. 425+00
 EB OUTSIDE EOP RT. STA. 425+00 TO STA. 435+00

PIPE UNDERDRAINS 4" (SPECIAL)

WB OUTSIDE LT. STA. 426+00, 21' @ 1.00% SLOPE
 WB OUTSIDE LT. STA. 431+00, 24' @ 1.00% SLOPE
 WB INSIDE LT. STA. 424+00, 17' @ 1.00% SLOPE
 WB INSIDE LT. STA. 429+00, 17' @ 1.00% SLOPE
 WB INSIDE LT. STA. 434+00, 17' @ 1.00% SLOPE
 EB INSIDE RT. STA. 424+00, 17' @ 1.00% SLOPE
 EB INSIDE RT. STA. 429+00, 17' @ 1.00% SLOPE
 EB INSIDE RT. STA. 434+00, 17' @ 1.00% SLOPE
 EB OUTSIDE RT. STA. 426+00, 24' @ 1.00% SLOPE
 EB OUTSIDE RT. STA. 430+00, 21' @ 1.00% SLOPE
 EB OUTSIDE RT. STA. 435+00, 24' @ 1.00% SLOPE

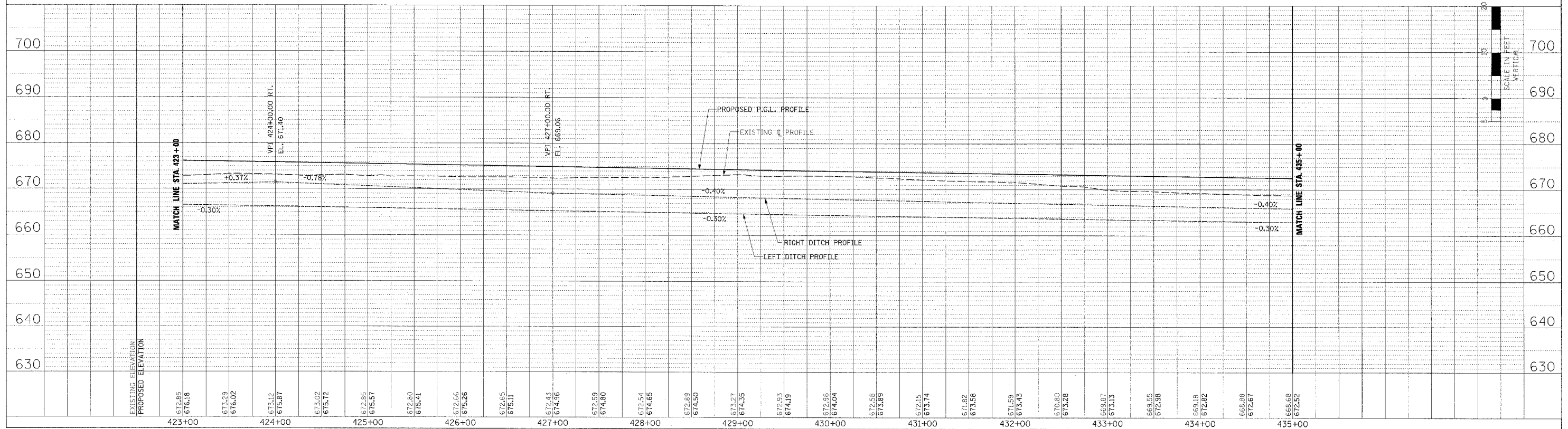
CONCRETE HEADWALL FOR PIPE DRAINS

WB OUTSIDE STA. 426+00, 70' LT., INV. ELEV. = 672.57
 WB OUTSIDE STA. 431+00, 73' LT., INV. ELEV. = 670.54
 WB INSIDE STA. 424+00, 8' LT., INV. ELEV. = 673.22
 WB INSIDE STA. 429+00, 8' LT., INV. ELEV. = 671.70
 WB INSIDE STA. 434+00, 8' LT., INV. ELEV. = 670.18
 EB INSIDE STA. 424+00, 8' RT., INV. ELEV. = 673.22
 EB INSIDE STA. 429+00, 8' RT., INV. ELEV. = 671.70
 EB INSIDE STA. 434+00, 8' RT., INV. ELEV. = 670.18
 EB OUTSIDE STA. 425+00, 73' RT., INV. ELEV. = 672.37
 EB OUTSIDE STA. 430+00, 70' RT., INV. ELEV. = 671.36
 EB OUTSIDE STA. 435+00, 73' RT., INV. ELEV. = 669.33



DATE	BY
DATE	BY
DATE	BY
DATE	BY
DATE	BY

DATE	BY
DATE	BY
DATE	BY
DATE	BY
DATE	BY



DRAINAGE PLAN AND PROFILE - IL. ROUTE 336 - STA. 423+00 TO STA. 435+00