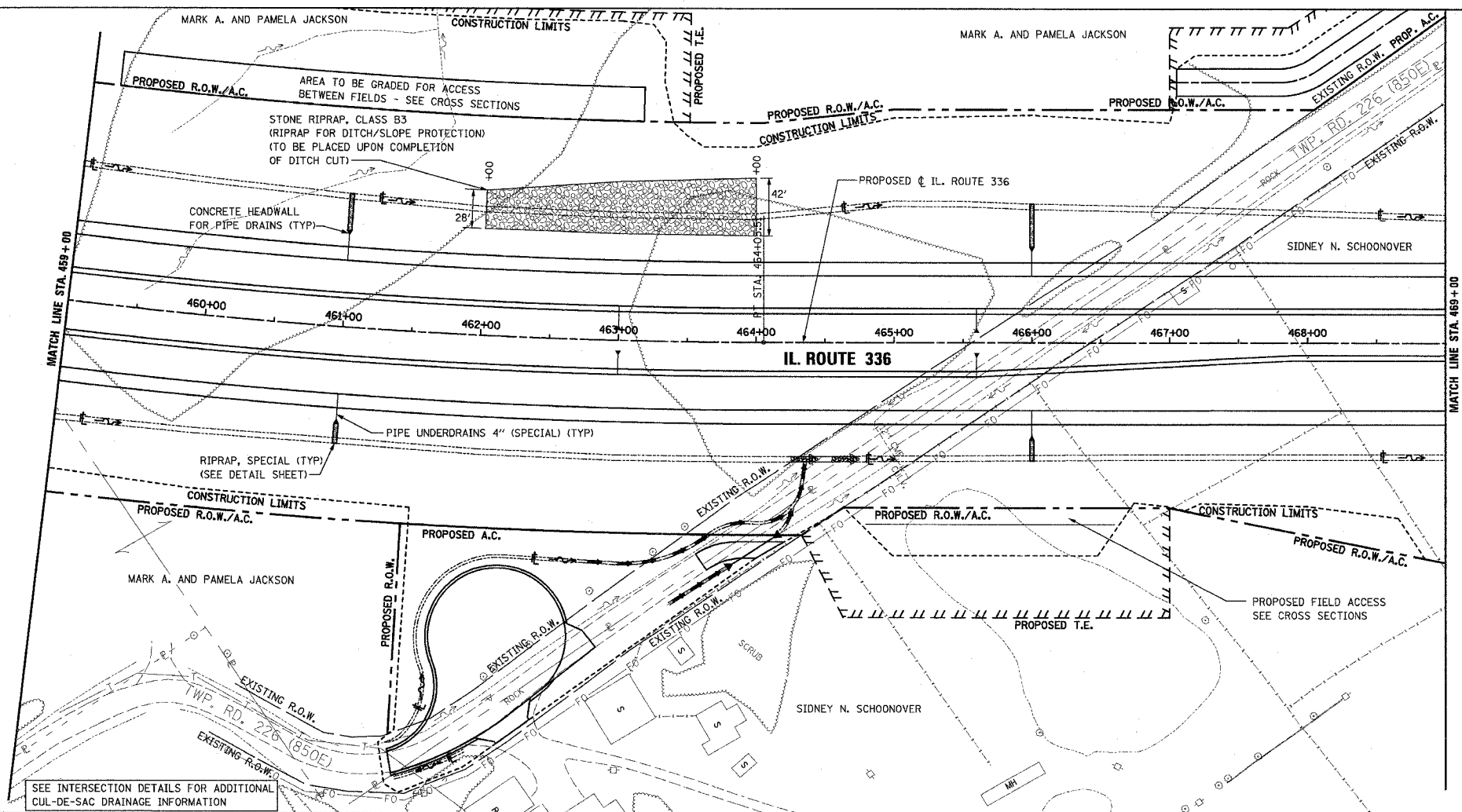


PERMANENT EROSION CONTROL LEGEND  
 AGGREGATE DITCH (TO BE PLACED UPON COMPLETION OF DITCH CUT)

F.A.P. RTE.	SECTION	COUNTY	TOTAL SHEETS	SHEET NO.
315	55-2	McDONOUGH	1025	218
STA. 459+00		TO STA. 469+00		
FED. ROAD DIST. NO. 4 ILLINOIS FED. AID PROJECT				



PIPE UNDERDRAINS 4"

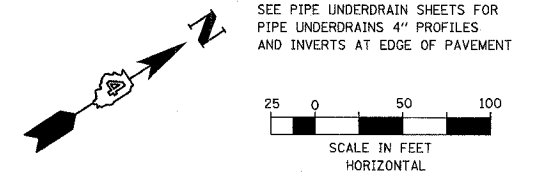
WB OUTSIDE EOP LT. STA. 459+00 TO STA. 469+00  
 WB INSIDE EOP LT. STA. 459+00 TO STA. 469+00  
 EB INSIDE EOP RT. STA. 459+00 TO STA. 469+00  
 EB OUTSIDE RT. STA. 459+00 TO STA. 469+00

PIPE UNDERDRAINS 4" (SPECIAL)

WB OUTSIDE LT. STA. 461+00, 18' @ 1.00% SLOPE  
 WB OUTSIDE LT. STA. 466+00, 18' @ 1.00% SLOPE  
 WB INSIDE LT. STA. 463+00, 14' @ 1.00% SLOPE  
 WB INSIDE LT. STA. 465+60, 14' @ 1.00% SLOPE  
 EB INSIDE RT. STA. 463+00, 14' @ 1.00% SLOPE  
 EB INSIDE RT. STA. 465+60, 14' @ 1.00% SLOPE  
 EB OUTSIDE RT. STA. 461+00, 18' @ 1.00% SLOPE  
 EB OUTSIDE RT. STA. 466+00, 18' @ 1.00% SLOPE

CONCRETE HEADWALL FOR PIPE DRAINS

WB OUTSIDE STA. 461+00, 67' LT., INV. ELEV. = 653.67  
 WB OUTSIDE STA. 466+00, 67' LT., INV. ELEV. = 642.55  
 WB INSIDE STA. 463+00, 11' LT., INV. ELEV. = 650.35  
 WB INSIDE STA. 465+60, 9' LT., INV. ELEV. = 643.76  
 EB INSIDE STA. 463+00, 11' RT., INV. ELEV. = 650.35  
 EB INSIDE STA. 465+60, 9' RT., INV. ELEV. = 643.76  
 EB OUTSIDE STA. 461+00, 67' RT., INV. ELEV. = 655.69  
 EB OUTSIDE STA. 466+00, 67' RT., INV. ELEV. = 642.90



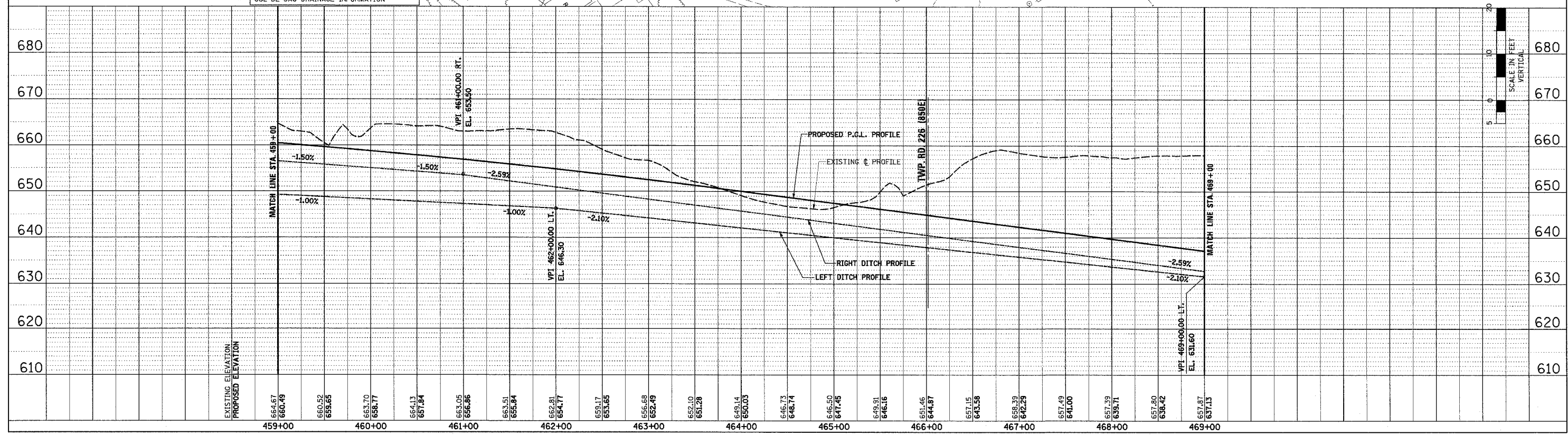
SEE INTERSECTION DETAILS FOR ADDITIONAL CUL-DE-SAC DRAINAGE INFORMATION

PLAN

DATE	
BY	
CHECKED	
DESIGNED	
NOTED	
NO.	

PROFILE

DATE	
BY	
CHECKED	
DESIGNED	
NOTED	
NO.	



DRAINAGE PLAN AND PROFILE - IL. ROUTE 336 - STA. 459+00 TO STA. 469+00

3/26/2006 4:17:28PM 85.54.50 IN