

PERMANENT EROSION CONTROL LEGEND

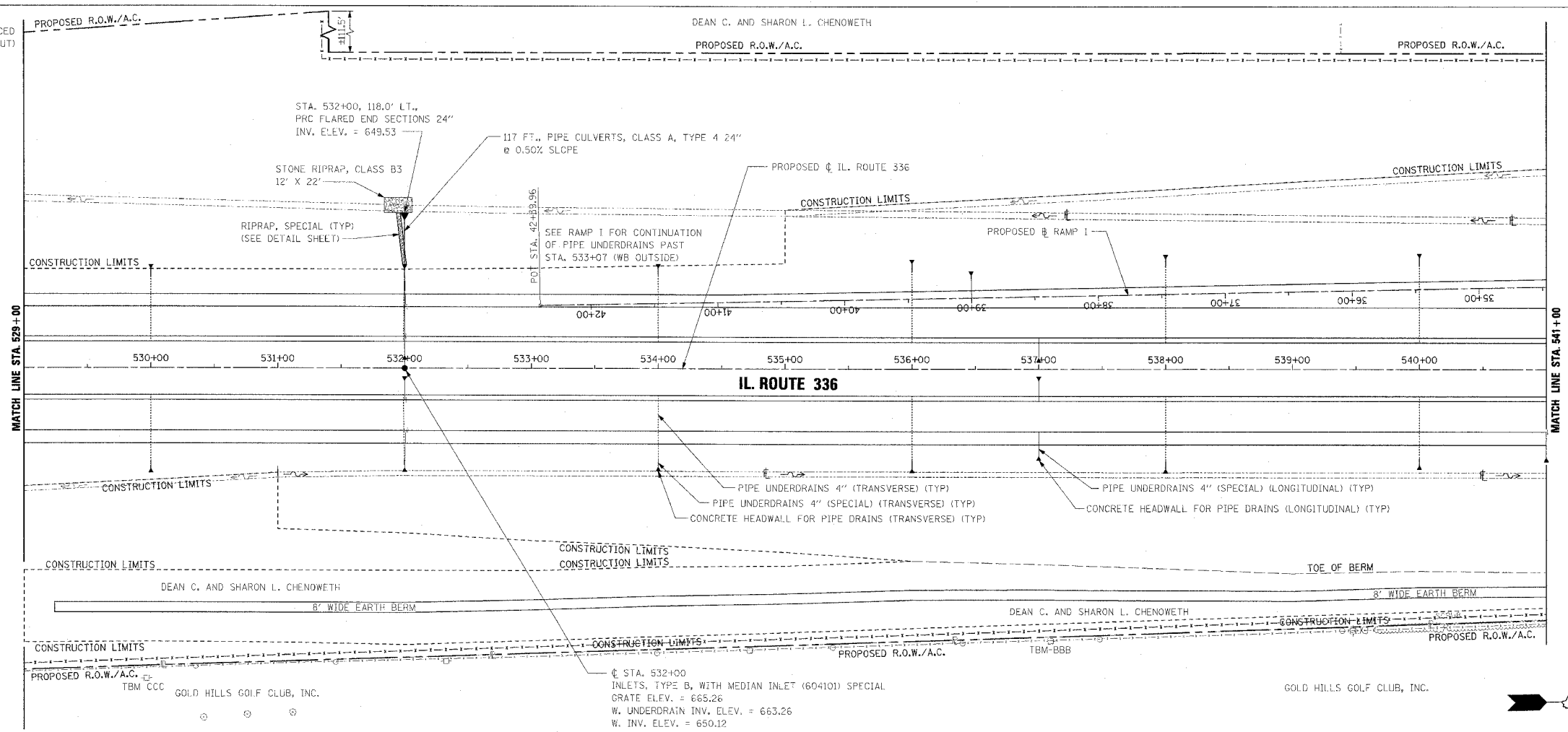
AGGREGATE DITCH (TO BE PLACED UPON COMPLETION OF DITCH CUT)

DEAN C. AND SHARON L. CHENOWETH

PROPOSED R.O.W./A.C.

PROPOSED R.O.W./A.C.

F.A.P. RTE.	SECTION	COUNTY	TOTAL SHEETS	SHEET NO.
315	55-2	McDONOUGH	1025	224
STA. 529+00		TO STA. 541+00		
FED. ROAD DIST. NO. 4 ILLINOIS FED. AID PROJECT				



PIPE UNDERDRAINS 4" (LONGITUDINAL)

WB OUTSIDE EOP LT. STA. 529+00 TO STA. 532+00
 WB OUTSIDE EOP LT. STA. 532+00 TO STA. 533+07
 WB INSIDE EOP LT. STA. 529+00 TO STA. 532+00
 WB INSIDE EOP LT. STA. 532+00 TO STA. 541+00
 EB INSIDE EOP RT. STA. 529+00 TO STA. 532+00
 EB INSIDE EOP RT. STA. 532+00 TO STA. 541+00
 EB OUTSIDE EOP RT. STA. 529+00 TO STA. 532+00
 EB OUTSIDE EOP RT. STA. 532+00 TO STA. 541+00

PIPE UNDERDRAINS 4" (SPECIAL) (LONGITUDINAL)

WB OUTSIDE LT. STA. 532+00, 30' @ 5.30% SLOPE
 WB INSIDE LT. STA. 532+00, 19' @ 1.00% SLOPE
 WB INSIDE LT. STA. 537+00, 16' @ 1.00% SLOPE
 EB INSIDE RT. STA. 532+00, 19' @ 1.00% SLOPE
 EB INSIDE RT. STA. 537+00, 16' @ 1.00% SLOPE
 EB OUTSIDE RT. STA. 532+00, 29' @ 2.10% SLOPE
 EB OUTSIDE RT. STA. 537+00, 19' @ 1.00% SLOPE
 EB OUTSIDE RT. STA. 541+00, 20' @ 1.00% SLOPE

CONCRETE HEADWALL FOR PIPE DRAINS (LONGITUDINAL)

*WB OUTSIDE STA. 532+00, 79' LT., INV. ELEV. = 664.50
 *WB INSIDE STA. 532+00, 10' LT., INV. ELEV. = 666.32
 *WB INSIDE STA. 537+00, 9' LT., INV. ELEV. = 664.44
 *EB INSIDE STA. 532+00, 10' RT., INV. ELEV. = 666.28
 *EB INSIDE STA. 537+00, 3' RT., INV. ELEV. = 664.44
 *EB OUTSIDE STA. 532+00, 79' RT., INV. ELEV. = 664.90
 *EB OUTSIDE STA. 537+00, 68' RT., INV. ELEV. = 664.41
 *EB OUTSIDE STA. 541+00, 69' RT., INV. ELEV. = 662.80

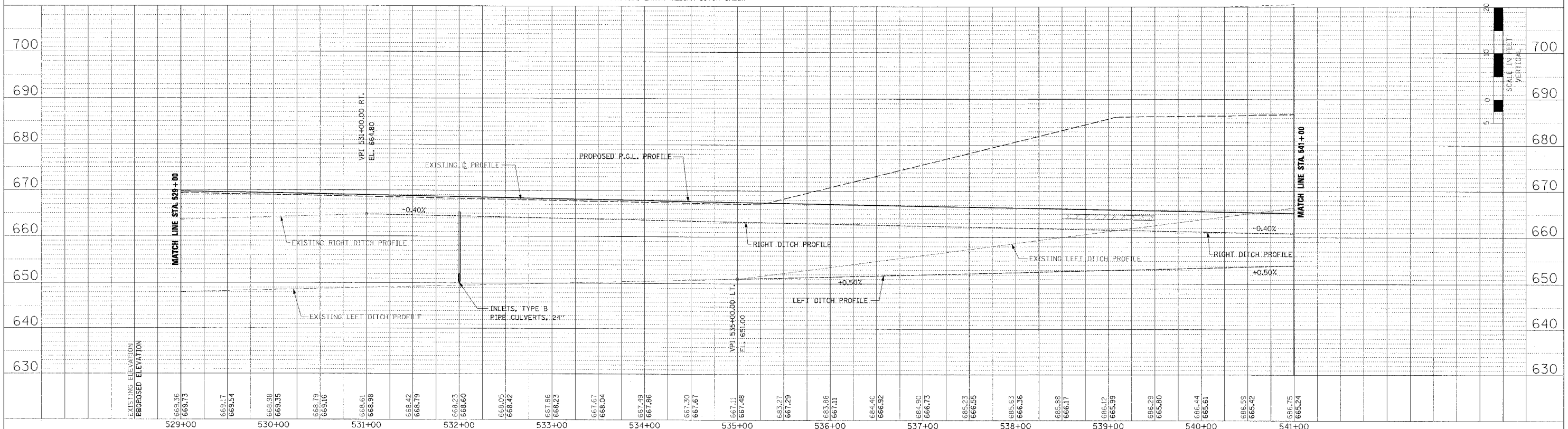
*SHARED WITH PIPE UNDERDRAINS 4" (TRANSVERSE)

SEE PIPE UNDERDRAIN SHEETS FOR PIPE UNDERDRAINS 4" PROFILES AND INVERTS AT EDGE OF PAVEMENT.

SEE TRANSVERSE DRAIN DETAIL SHEETS FOR ADDITIONAL PIPE UNDERDRAINS 4" (TRANSVERSE) AND/OR 6" (TRANSVERSE) DETAILS.

PLAN	REVISIONS	DATE
NO. 1	ISSUED FOR CONSTRUCTION	3/27/2006
NO. 2	REVISED	
NO. 3	REVISED	
NO. 4	REVISED	

PROFILE	REVISIONS	DATE
NO. 1	ISSUED FOR CONSTRUCTION	3/27/2006
NO. 2	REVISED	
NO. 3	REVISED	
NO. 4	REVISED	



DRAINAGE PLAN AND PROFILE - IL. ROUTE 336 - STA. 529+00 TO STA. 541+00