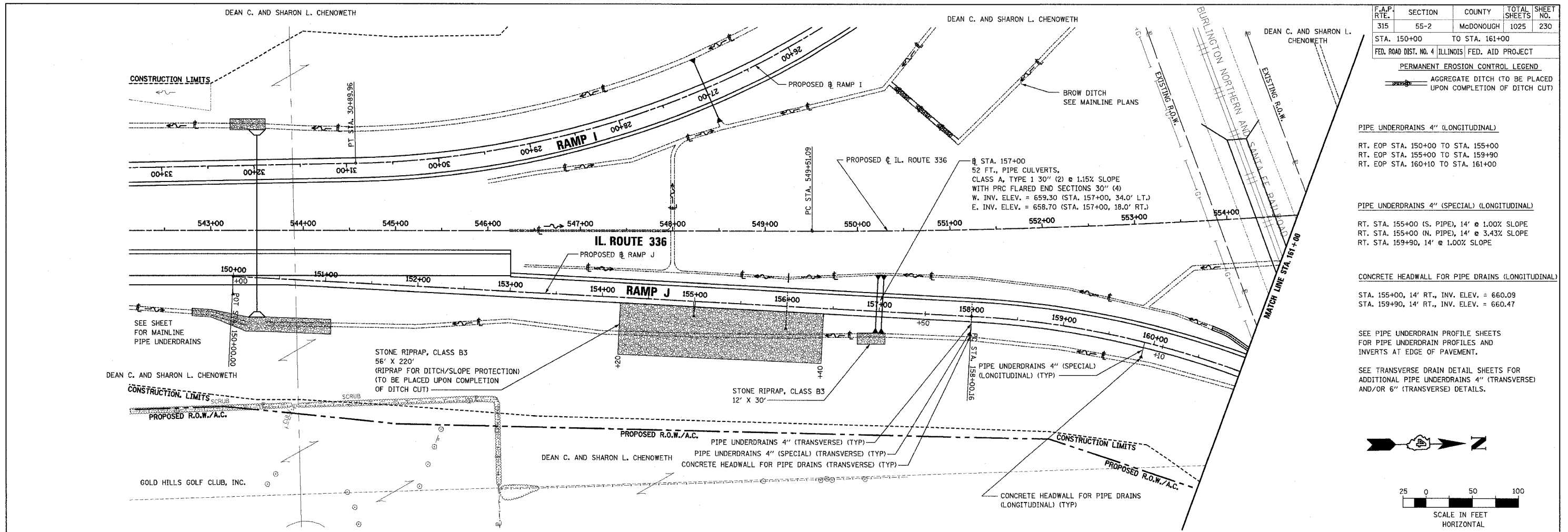


DATE	
BY	
REVISION	
PLANNED	
ALIGNED	
NOTED	
NO.	
FILE NAME	

DATE	
BY	
REVISION	
PROFILES	
NOTED	
NO.	
FILE NAME	



F.A.P. RTE.	SECTION	COUNTY	TOTAL SHEETS	SHEET NO.
315	55-2	McDONOUGH	1025	230
STA. 150+00 TO STA. 161+00		FED. ROAD DIST. NO. 4 ILLINOIS FED. AID PROJECT		
PERMANENT EROSION CONTROL LEGEND				
AGGREGATE DITCH (TO BE PLACED UPON COMPLETION OF DITCH CUT)				

PIPE UNDERDRAINS 4" (LONGITUDINAL)

RT. EOP STA. 150+00 TO STA. 155+00  
 RT. EOP STA. 155+00 TO STA. 159+00  
 RT. EOP STA. 160+10 TO STA. 161+00

PIPE UNDERDRAINS 4" (SPECIAL) (LONGITUDINAL)

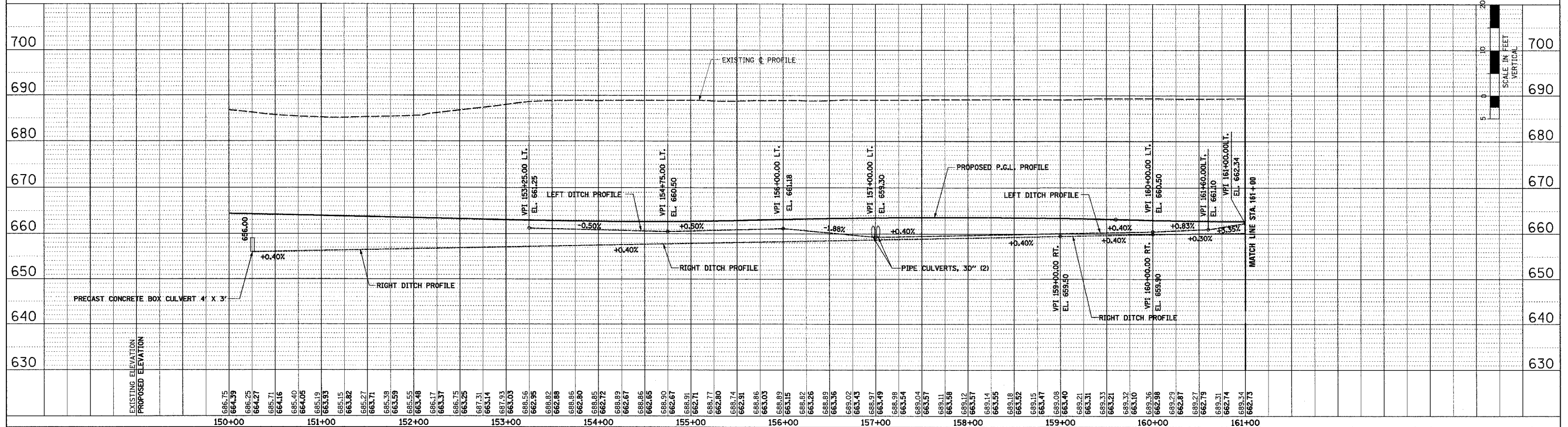
RT. STA. 155+00 (S. PIPE), 14' @ 1.00% SLOPE  
 RT. STA. 155+00 (N. PIPE), 14' @ 3.43% SLOPE  
 RT. STA. 159+90, 14' @ 1.00% SLOPE

CONCRETE HEADWALL FOR PIPE DRAINS (LONGITUDINAL)

STA. 155+00, 14' RT., INV. ELEV. = 660.09  
 STA. 159+90, 14' RT., INV. ELEV. = 660.47

SEE PIPE UNDERDRAIN PROFILE SHEETS FOR PIPE UNDERDRAIN PROFILES AND INVERTS AT EDGE OF PAVEMENT.

SEE TRANSVERSE DRAIN DETAIL SHEETS FOR ADDITIONAL PIPE UNDERDRAINS 4" (TRANSVERSE) AND/OR 6" (TRANSVERSE) DETAILS.



DRAINAGE PLAN AND PROFILE - RAMP J - STA. 150+00 TO STA. 161+00