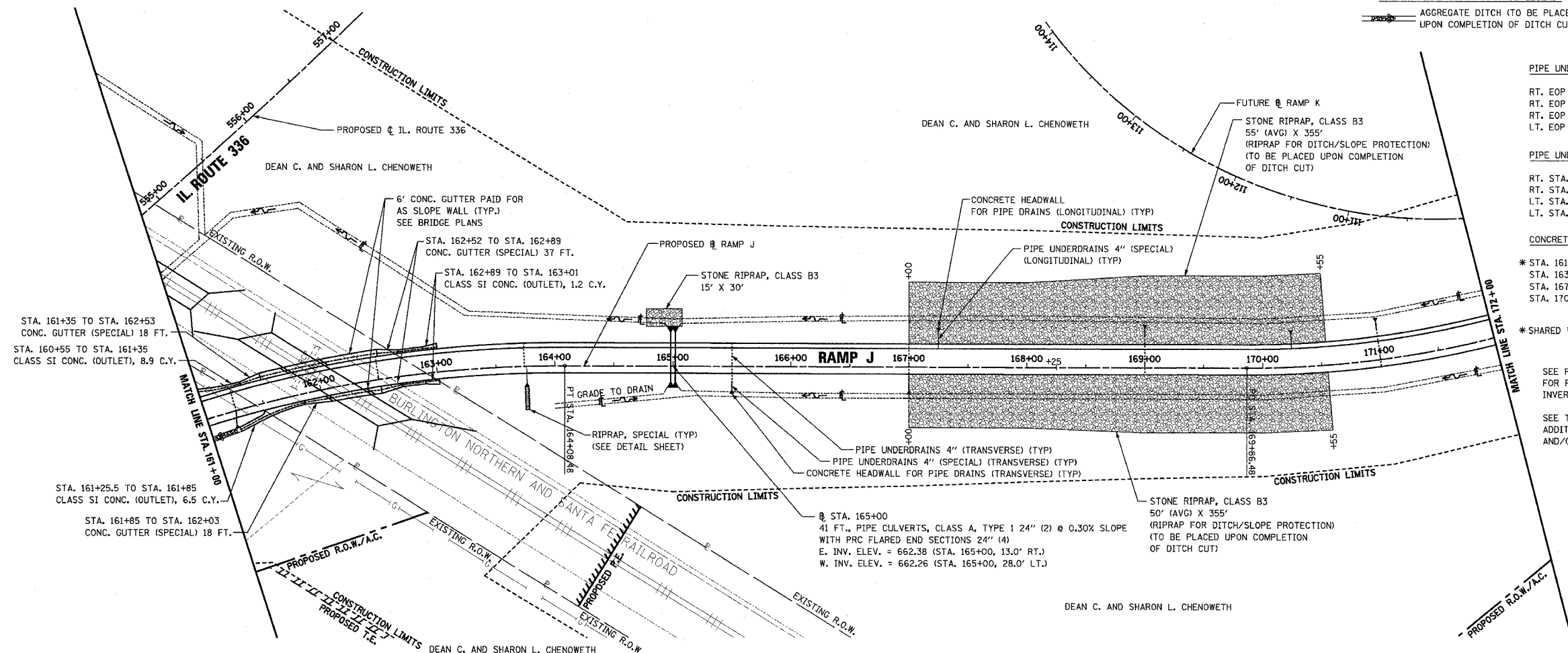


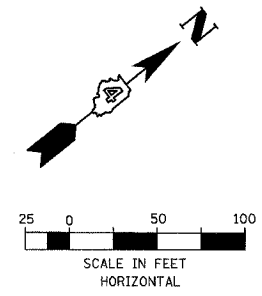
F.A.P. RTE.	SECTION	COUNTY	TOTAL SHEETS	SHEET NO.
315	55-2	McDONOUGH	1025	231
STA. 161+00		TO STA. 172+00		
FED. ROAD DIST. NO. 4 ILLINOIS FED. AID PROJECT				

PERMANENT EROSION CONTROL LEGEND
 AGGREGATE DITCH (TO BE PLACED UPON COMPLETION OF DITCH CUT)



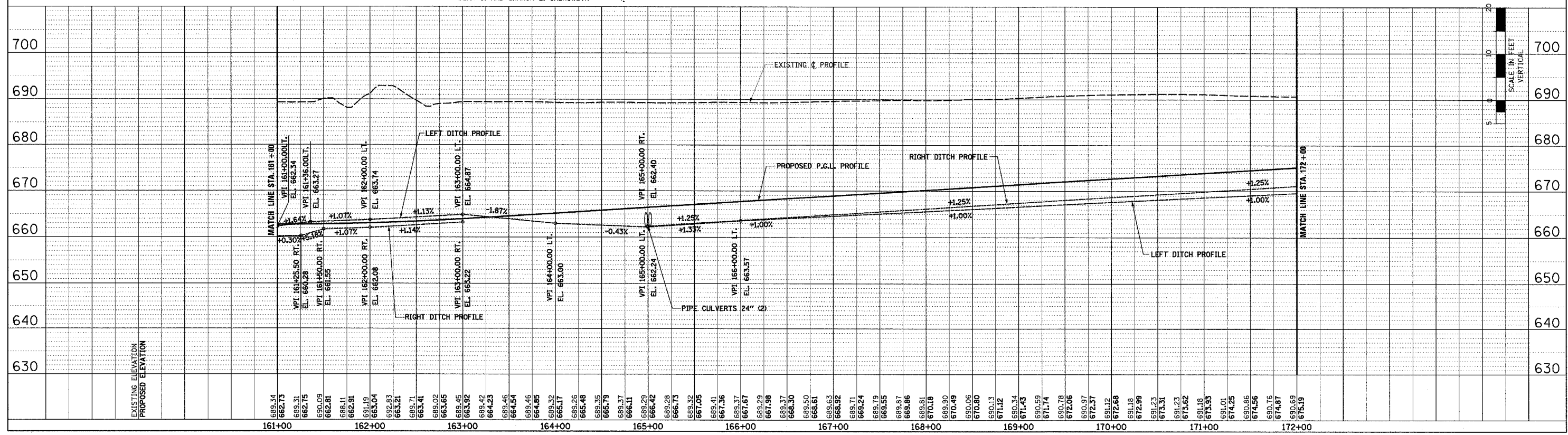
- PIPE UNDERDRAINS 4" (LONGITUDINAL)
 RT. EOP STA. 161+00 TO STA. 161+25
 RT. EOP STA. 161+25 TO STA. 163+75
 RT. EOP STA. 163+75 TO STA. 168+25
 LT. EOP STA. 167+25 TO STA. 172+00
- PIPE UNDERDRAINS 4" (SPECIAL) (LONGITUDINAL)
 RT. STA. 161+25, 14' @ 0.50% SLOPE
 RT. STA. 163+75, 14' @ 1.00% SLOPE
 LT. STA. 167+25, 14' @ 1.00% SLOPE
 LT. STA. 170+25, 12' @ 1.00% SLOPE
- CONCRETE HEADWALL FOR PIPE DRAINS (LONGITUDINAL)
 * STA. 161+25, 14' RT., INV. ELEV. = 660.40
 STA. 163+75, 14' RT., INV. ELEV. = 662.71
 STA. 167+25, 30' LT., INV. ELEV. = 667.32
 STA. 170+25, 28' LT., INV. ELEV. = 669.84
- * SHARED WITH PIPE UNDERDRAINS 4" (TRANSVERSE)

SEE PIPE UNDERDRAIN PROFILE SHEETS FOR PIPE UNDERDRAIN PROFILES AND INVERTS AT EDGE OF PAVEMENT.
 SEE TRANSVERSE DRAIN DETAIL SHEETS FOR ADDITIONAL PIPE UNDERDRAINS 4" (TRANSVERSE) AND/OR 6" (TRANSVERSE) DETAILS.



DATE	
BY	
DESIGNED	
PLANNED	
ALIGNED	
CHECKED	
NOTED	
FILED	
NO.	

DATE	
BY	
DESIGNED	
PLANNED	
ALIGNED	
CHECKED	
NOTED	
FILED	
NO.	



DRAINAGE PLAN AND PROFILE - RAMP J - STA. 161+00 TO STA. 172+00

P:\PROJECTS\2005\177\2005-177-001\DWG\DRN.DWG