

F.A.P. RTE.	SECTION	COUNTY	TOTAL SHEETS	SHEET NO.
315	55-2	McDONOUGH	1025	311
STA. 127+00		TO STA. 139+00		
FED. ROAD DIST. NO. 4 ILLINOIS FED. AID PROJECT				

- TEMPORARY EROSION CONTROL LEGEND
- TEMPORARY DITCH CHECK
  - INLET AND PIPE PROTECTION
  - EROSION CONTROL BLANKET
  - HEAVY DUTY EROSION CONTROL BLANKET
  - AGGREGATE DITCH (TO BE PLACED UPON COMPLETION OF DITCH CUT)
  - PERIMETER EROSION BARRIER

PLAN

DATE	BY

PROJECT NO. \_\_\_\_\_

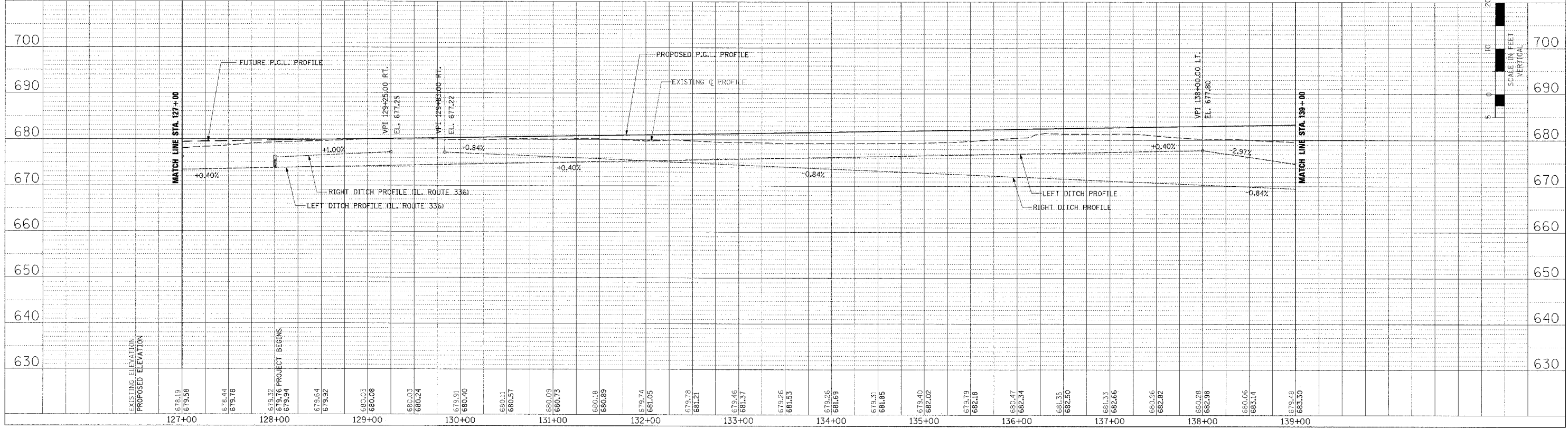
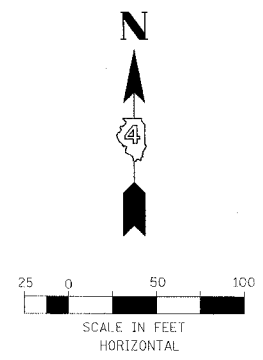
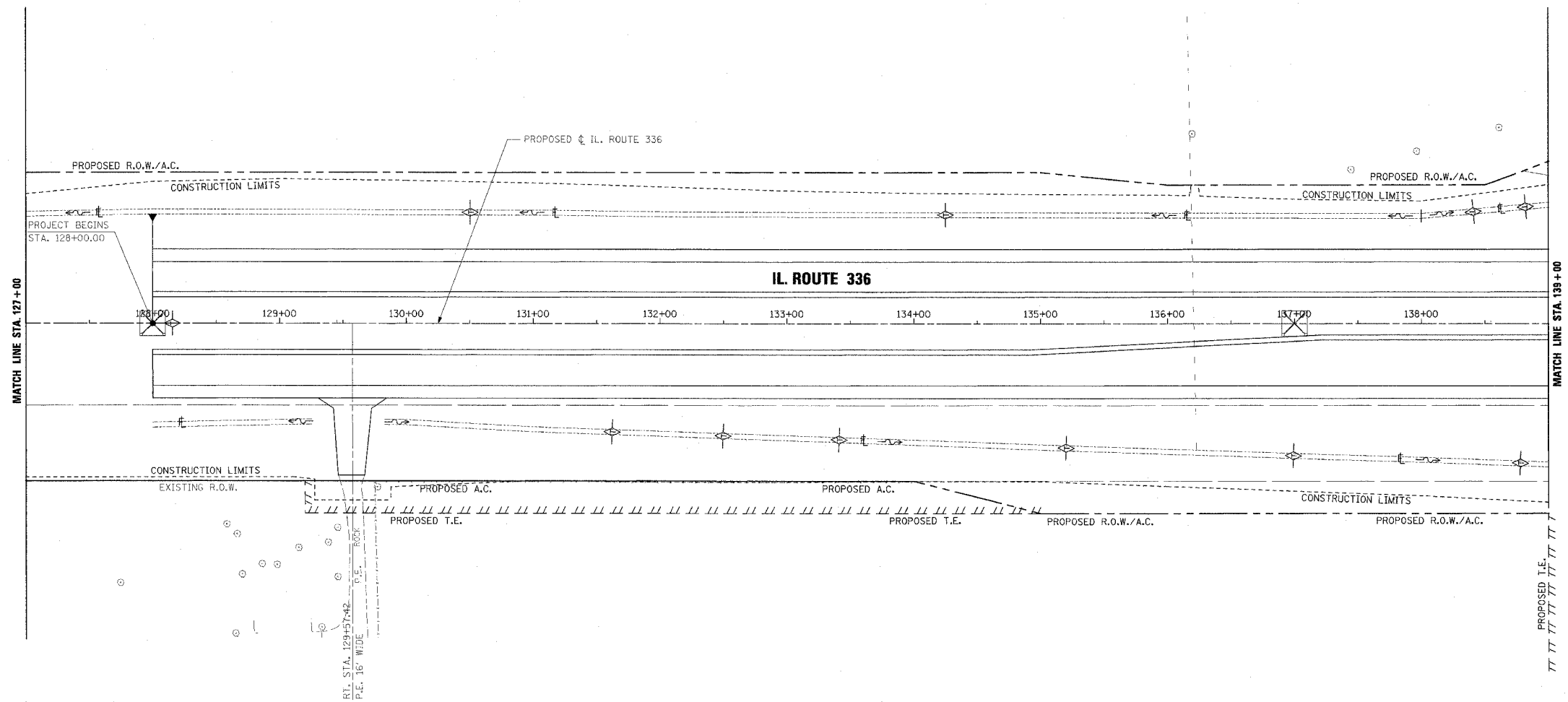
DATE FILED \_\_\_\_\_

PROFILE

DATE	BY

PROJECT NO. \_\_\_\_\_

DATE FILED \_\_\_\_\_



EROSION CONTROL PLAN AND PROFILE - IL. ROUTE 336 - STA. 127+00 TO STA. 139+00