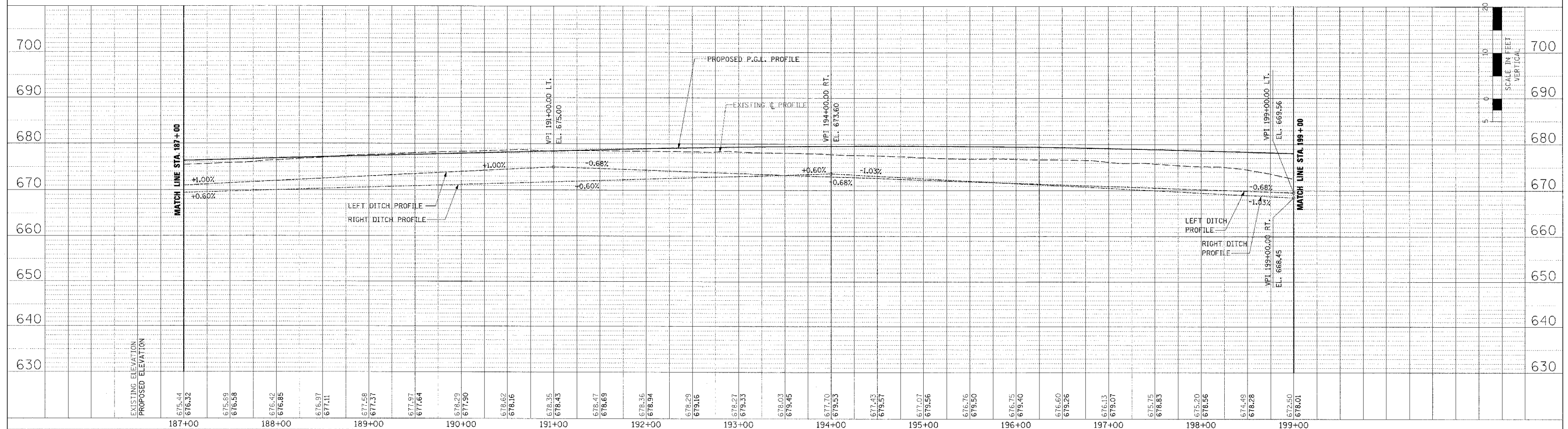
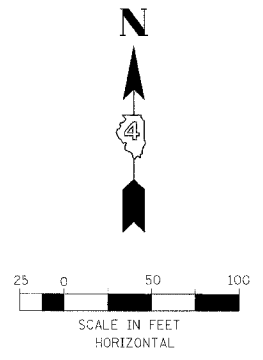
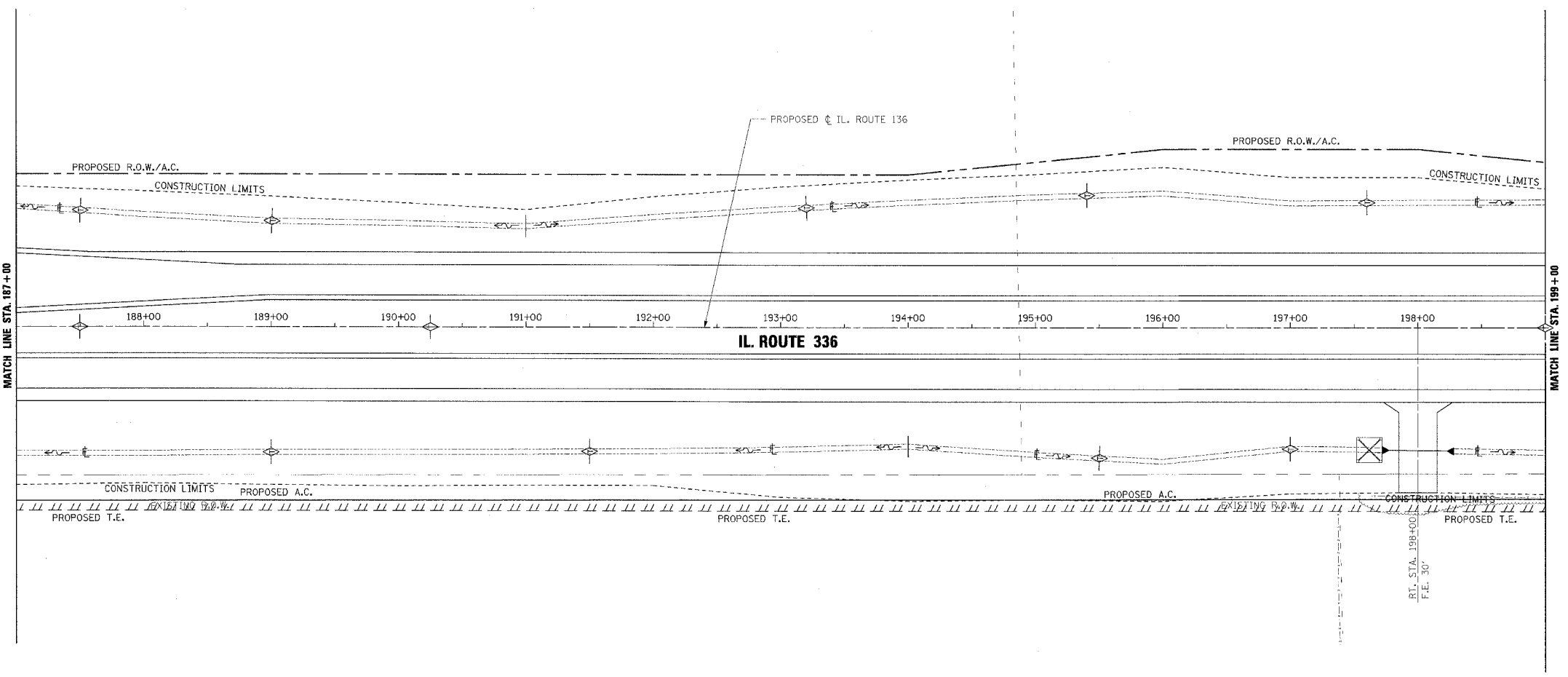


F.A.P. NO.	SECTION	COUNTY	TOTAL SHEETS	SHEET NO.
315	55-2	MCDONOUGH	1025	316
STA. 187+00		TO STA. 199+00		
FED. ROAD DIST. NO. 4 ILLINOIS FED. AID PROJECT				

- TEMPORARY EROSION CONTROL LEGEND**
- TEMPORARY DITCH CHECK
 - INLET AND PIPE PROTECTION
 - EROSION CONTROL BLANKET
 - HEAVY DUTY EROSION CONTROL BLANKET
 - AGGREGATE DITCH (TO BE PLACED UPON COMPLETION OF DITCH CUT)
 - PERIMETER EROSION BARRIER



EROSION CONTROL PLAN AND PROFILE - IL. ROUTE 336 - STA. 187+00 TO STA. 199+00

PLAN

DATE	BY
DESIGNED	BY
CHECKED	BY
NOTED	BY
DATE	BY

PROFILE

DATE	BY
DESIGNED	BY
CHECKED	BY
NOTED	BY
DATE	BY