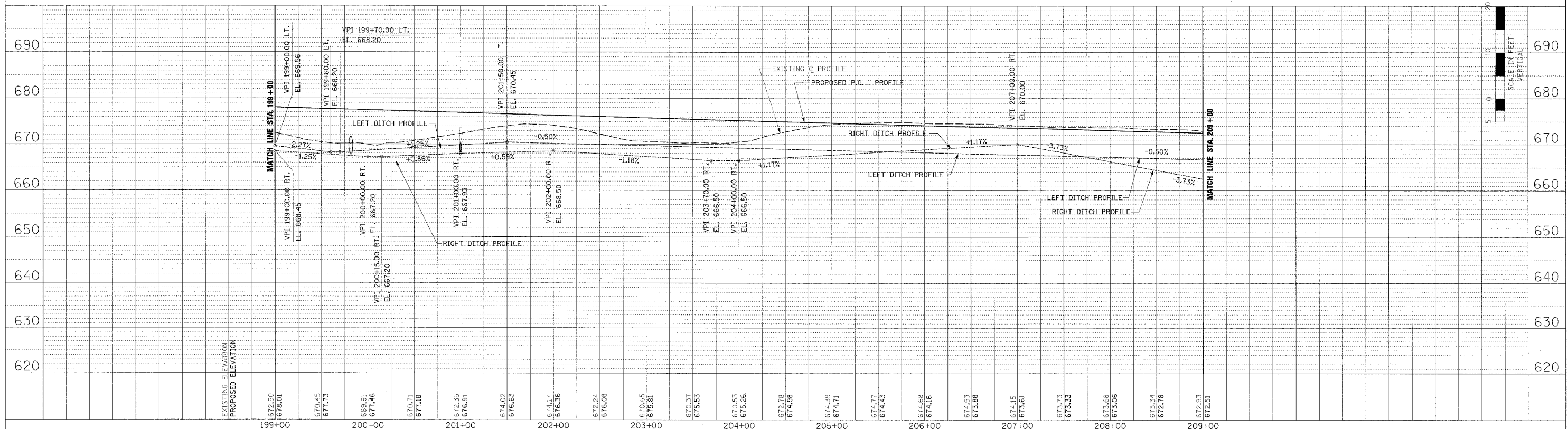
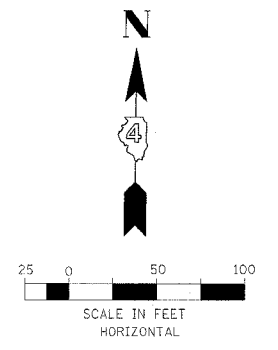
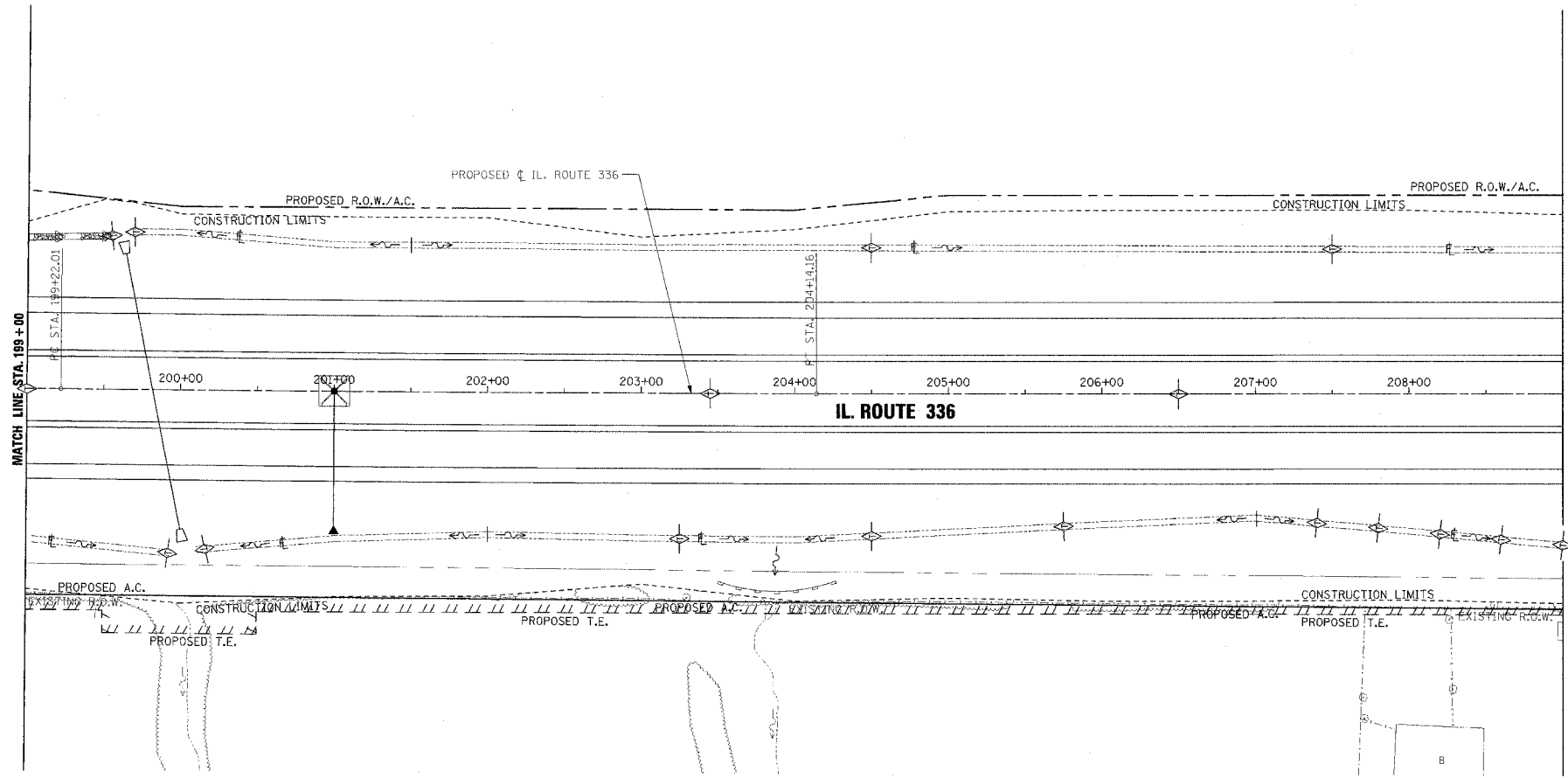


|   |         |                |              |           |
|---|---------|----------------|--------------|-----------|
| F.A.P. RTE.                                     | SECTION | COUNTY         | TOTAL SHEETS | SHEET NO. |
| 315   | 55-2    | McDONOUGH      | 1025         | 317       |
| STA. 199+00                                     |         | TO STA. 209+00 |              |           |
| FED. ROAD DIST. NO. 4 ILLINOIS FED. AID PROJECT |         |                |              |           |

- TEMPORARY EROSION CONTROL LEGEND**
- TEMPORARY DITCH CHECK
  - INLET AND PIPE PROTECTION
  - EROSION CONTROL BLANKET
  - HEAVY DUTY EROSION CONTROL BLANKET
  - AGGREGATE DITCH (TO BE PLACED UPON COMPLETION OF DITCH CUT)
  - PERIMETER EROSION BARRIER

|      |                  |      |
|------|------------------|------|
| PLAN | DESIGNED BY      | DATE |
|      | PLOTTED BY       |      |
|      | CHECKED BY       |      |
|      | NO. OF REVISIONS |      |
|      | DATE             |      |
|      | BY               |      |

|         |                  |      |
|---------|------------------|------|
| PROFILE | DESIGNED BY      | DATE |
|         | PLOTTED BY       |      |
|         | CHECKED BY       |      |
|         | NO. OF REVISIONS |      |
|         | DATE             |      |
|         | BY               |      |



**EROSION CONTROL PLAN AND PROFILE - IL. ROUTE 336 - STA. 199+00 TO STA. 209+00**