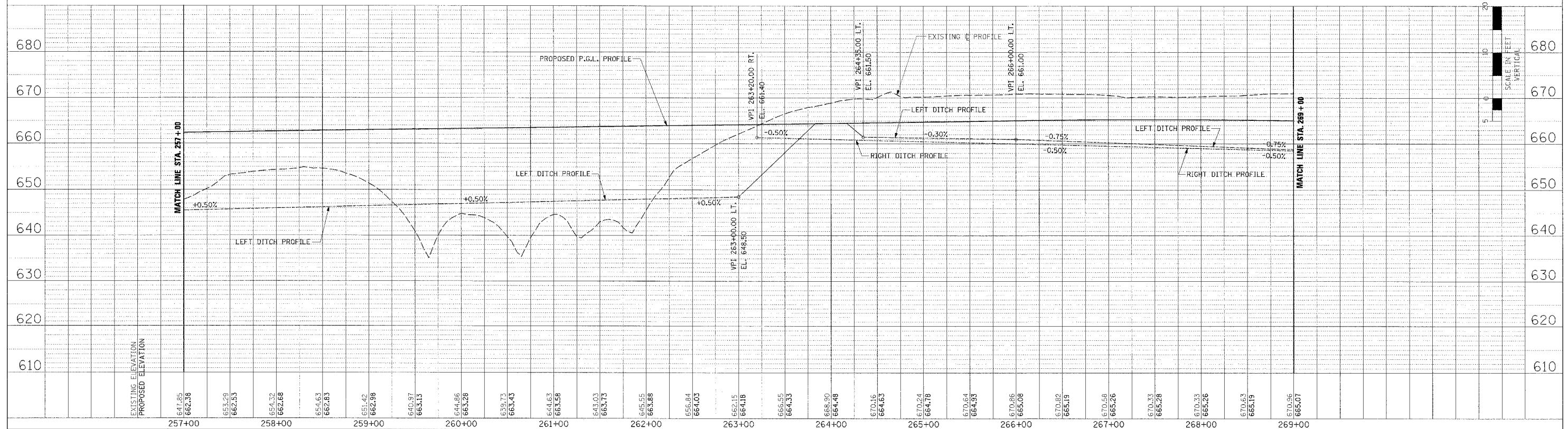
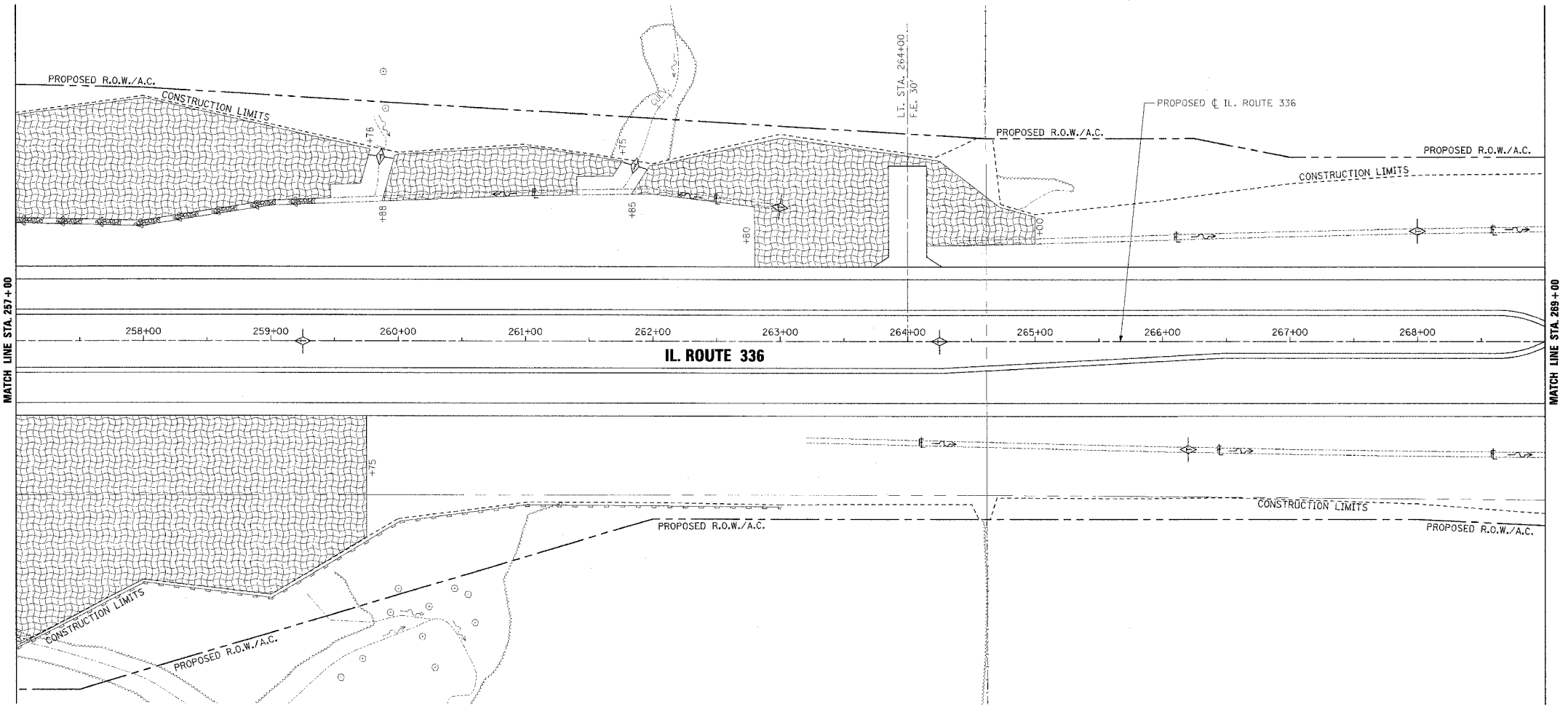
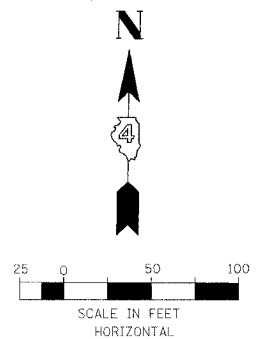


F.A.P. RTE.	SECTION	COUNTY	TOTAL SHEETS	SHEET NO.
315	55-2	McDONOUGH	1025	322
STA. 257+00		TO STA. 269+00		
FED. ROAD DIST. NO. 4		ILLINOIS FED. AID PROJECT		

- TEMPORARY EROSION CONTROL LEGEND
- TEMPORARY DITCH CHECK
  - INLET AND PIPE PROTECTION
  - EROSION CONTROL BLANKET
  - HEAVY DUTY EROSION CONTROL BLANKET
  - AGGREGATE DITCH (TO BE PLACED UPON COMPLETION OF DITCH CUT)
  - PERIMETER EROSION BARRIER



EROSION CONTROL PLAN AND PROFILE - IL. ROUTE 336 - STA. 257+00 TO STA. 269+00

DESIGNER	DATE
PLANN	
NOTE BOOK NO.	
PROJECT NO.	

PROF. ILL. NO.	DATE
GRADES CHECKED	
STRUCTURE NOTING CHECKED	
NO.	