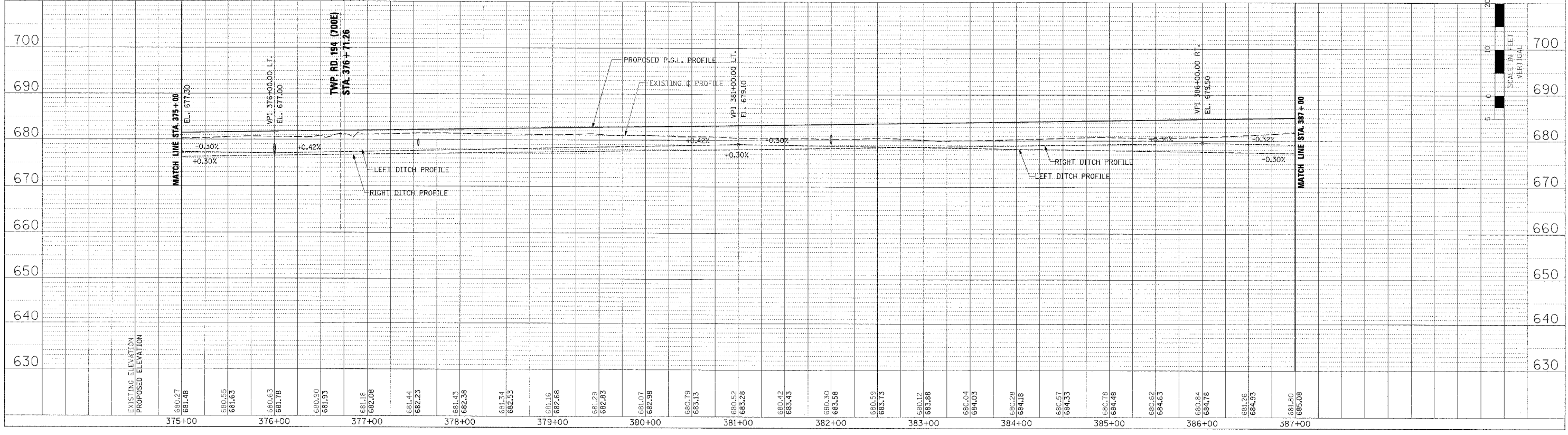
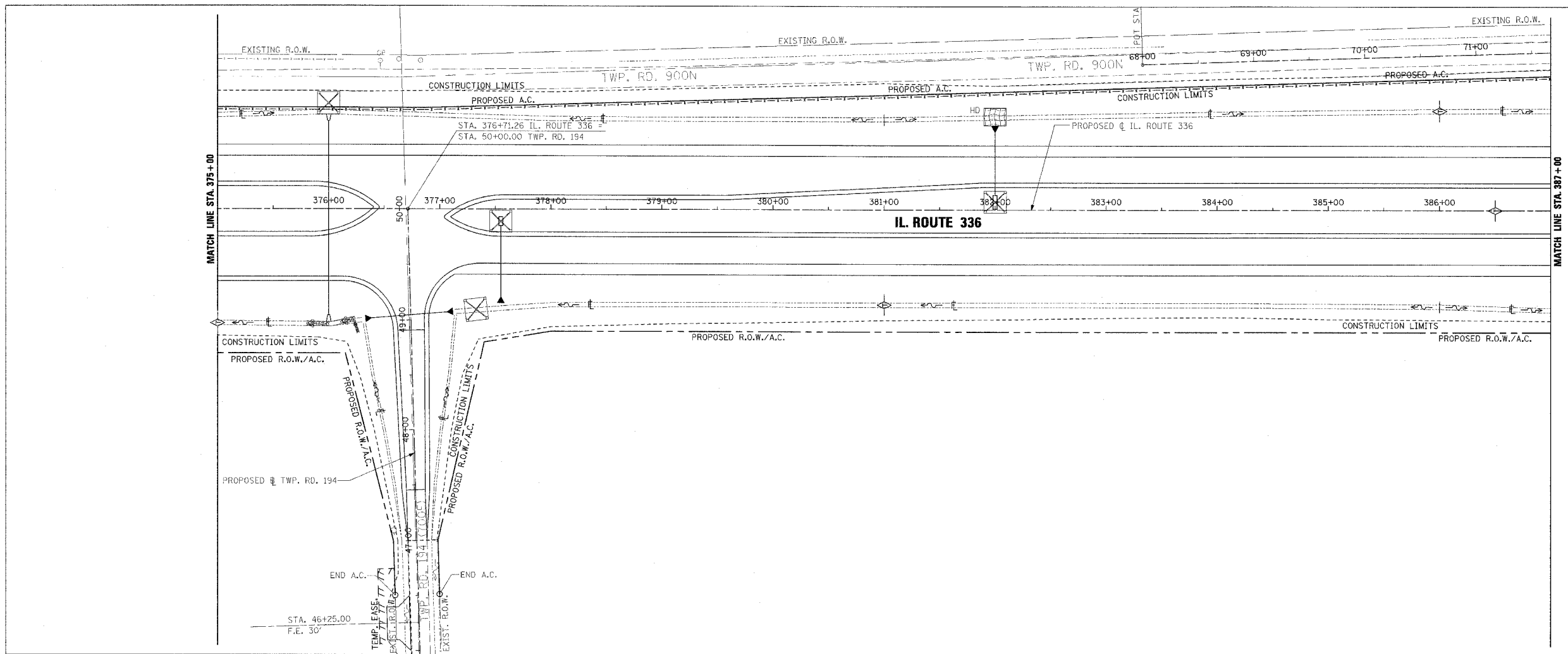
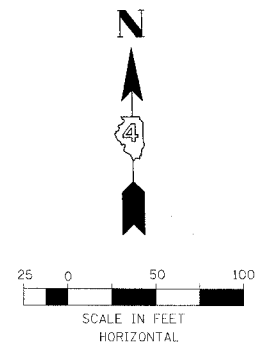


F.A.P. R.T.E.	SECTION	COUNTY	TOTAL SHEETS	SHEET NO.
315	55-2	MCDONOUGH	1025	332
STA. 375+00 TO STA. 387+00				
FED. ROAD DIST. NO. 4 ILLINOIS FED. AID PROJECT				

- TEMPORARY EROSION CONTROL LEGEND
- TEMPORARY DITCH CHECK
 - INLET AND PIPE PROTECTION
 - EROSION CONTROL BLANKET
 - HEAVY DUTY EROSION CONTROL BLANKET
 - AGGREGATE DITCH (TO BE PLACED UPON COMPLETION OF DITCH CUT)
 - PERIMETER EROSION BARRIER



EROSION CONTROL PLAN AND PROFILE - IL. ROUTE 336 - STA. 375 + 00 TO STA. 387 + 00

PLAN

APPROVED	DATE
REVISION	
NO. 100K	
NO. 100K	
NO. 100K	
NO. 100K	
NO. 100K	

PROFILE

APPROVED	DATE
REVISION	
NO. 100K	
NO. 100K	
NO. 100K	
NO. 100K	
NO. 100K	