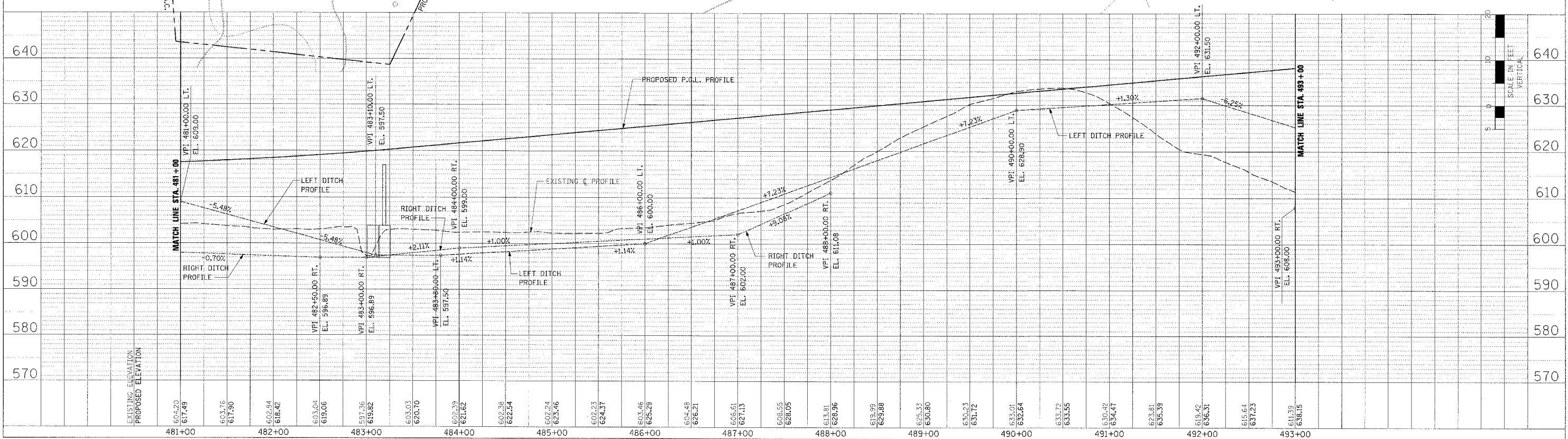
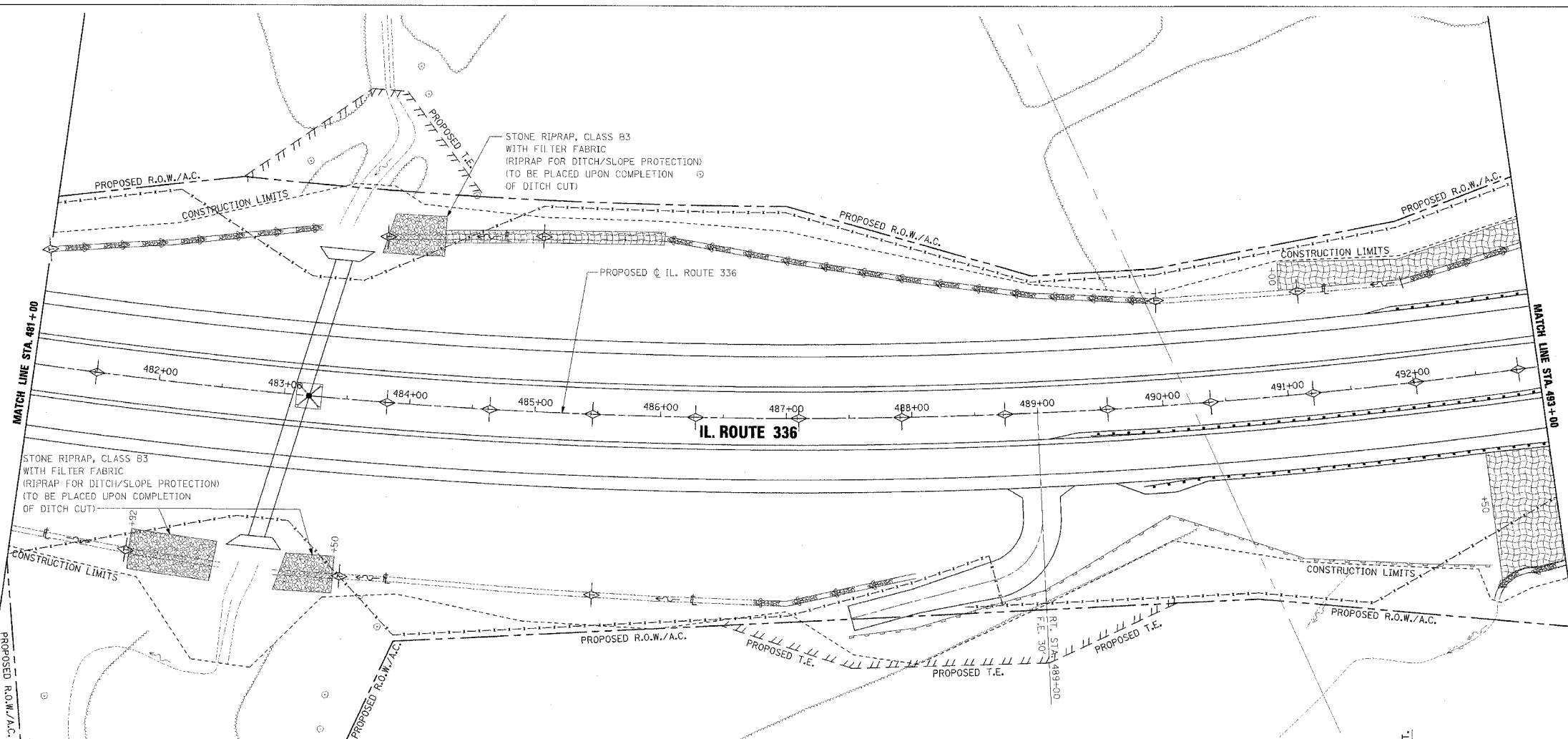
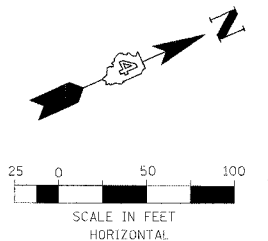


F.A.P. RTE.	SECTION	COUNTY	TOTAL SHEETS	SHEET NO.
315	55-2	MCDONOUGH	1025	341
STA. 481+00		TO STA. 493+00		
FED. ROAD DIST. NO. 1 ILLINOIS FED. AID PROJECT				

- TEMPORARY EROSION CONTROL LEGEND**
- ◇ TEMPORARY DITCH CHECK
 - INLET AND PIPE PROTECTION
 - ▨ EROSION CONTROL BLANKET
 - HD ▨ HEAVY DUTY EROSION CONTROL BLANKET
 - AGGREGATE DITCH (TO BE PLACED UPON COMPLETION OF DITCH CUT)
 - - - PERIMETER EROSION BARRIER



EROSION CONTROL PLAN AND PROFILE - IL. ROUTE 336 - STA. 481+00 TO STA. 493+00

PI	AN	DATE	
SUPERVISOR			
PLANNED			
NOTE BOOK			
NO.			

PROF.	J.C.	DATE	
REVISIONS			
PLANNED			
NOTE BOOK			
NO.			

33fec3d.dgn 3/30/2006 8:01:09 AM