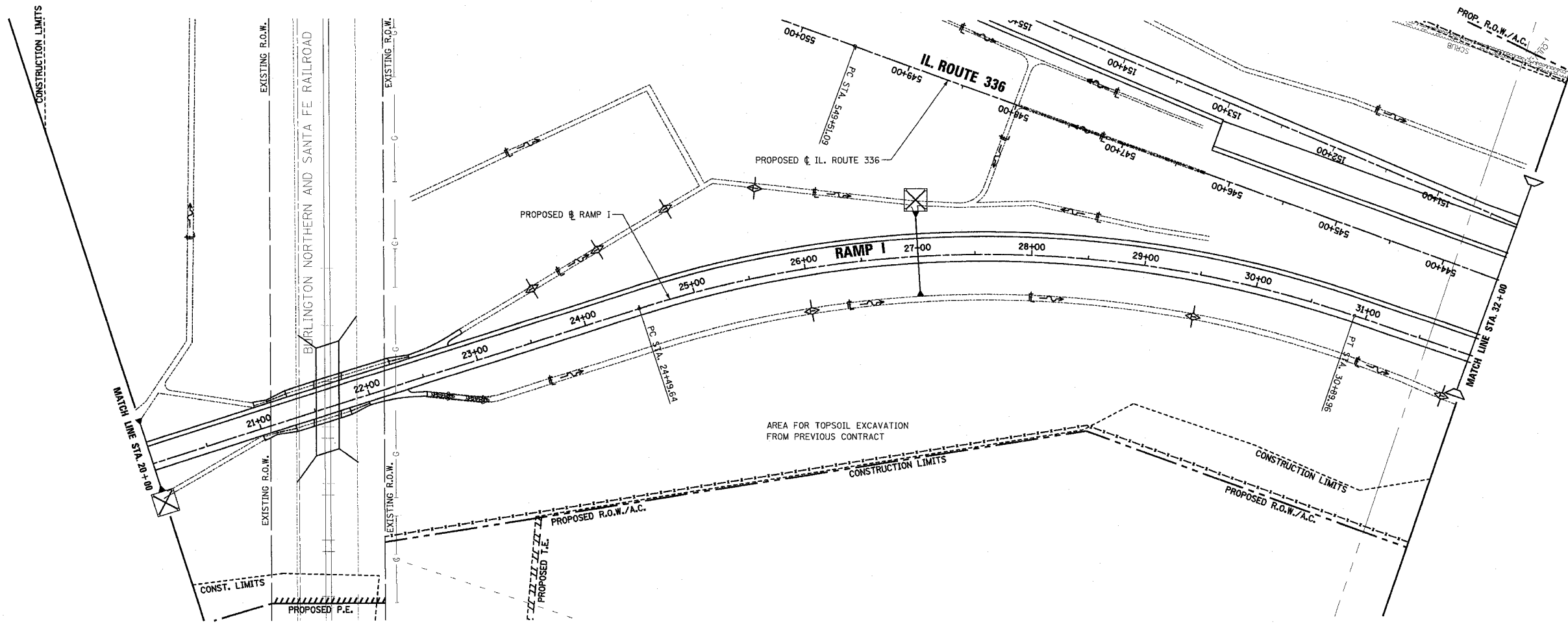
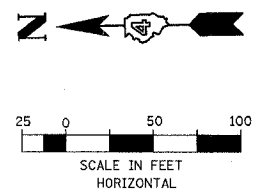


F.A.P. RTE.	SECTION	COUNTY	TOTAL SHEETS	SHEET NO.
315	55-2	McDONOUGH	1025	348
STA. 20+00		TO STA. 32+00		
FED. ROAD DIST. NO. 4 ILLINOIS FED. AID PROJECT				

- TEMPORARY EROSION CONTROL LEGEND**
- TEMPORARY DITCH CHECK
 - INLET AND PIPE PROTECTION
 - EROSION CONTROL BLANKET
 - HEAVY DUTY EROSION CONTROL BLANKET
 - AGGREGATE DITCH (TO BE PLACED UPON COMPLETION OF DITCH CUT)
 - PERIMETER EROSION BARRIER

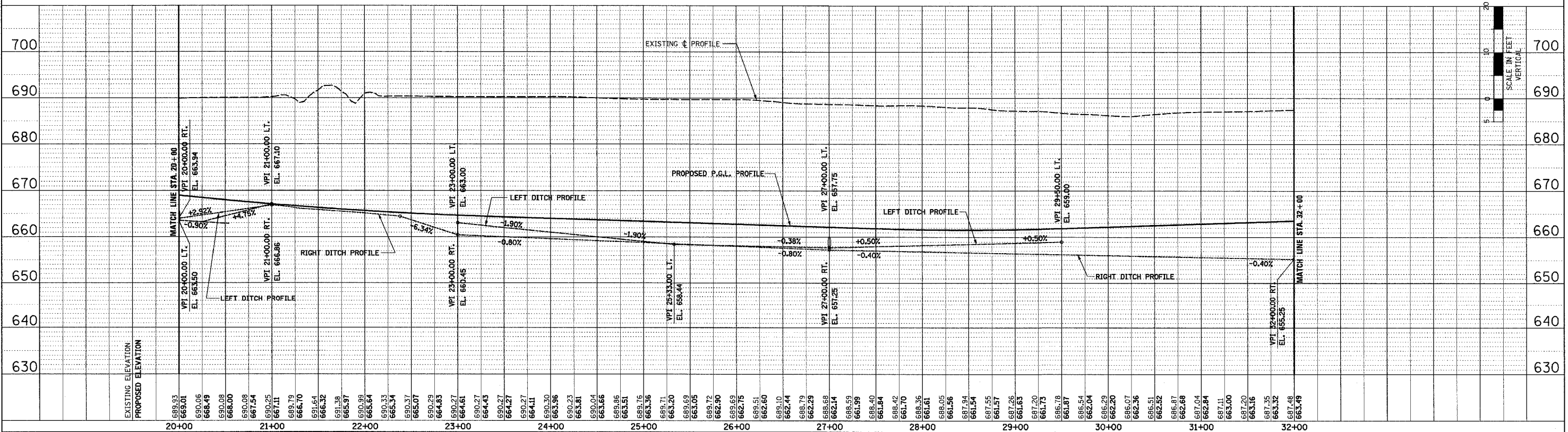


PLAN

REVIEWED	BY	DATE
NOTE BOOK		
ALIGNED		
CHECKED		
PT. OF WAY CHECKED		
NO. FILE NAME		

PROFILE

REVIEWED	BY	DATE
NOTE BOOK		
GRADES CHECKED		
NO. NOTED		
CONFORMANCE NOTATIONS (P/W)		



EROSION CONTROL PLAN AND PROFILE - RAMP I - STA. 20+00 TO STA. 32+00

RAMP I 10/20/06 10:02:12 AM