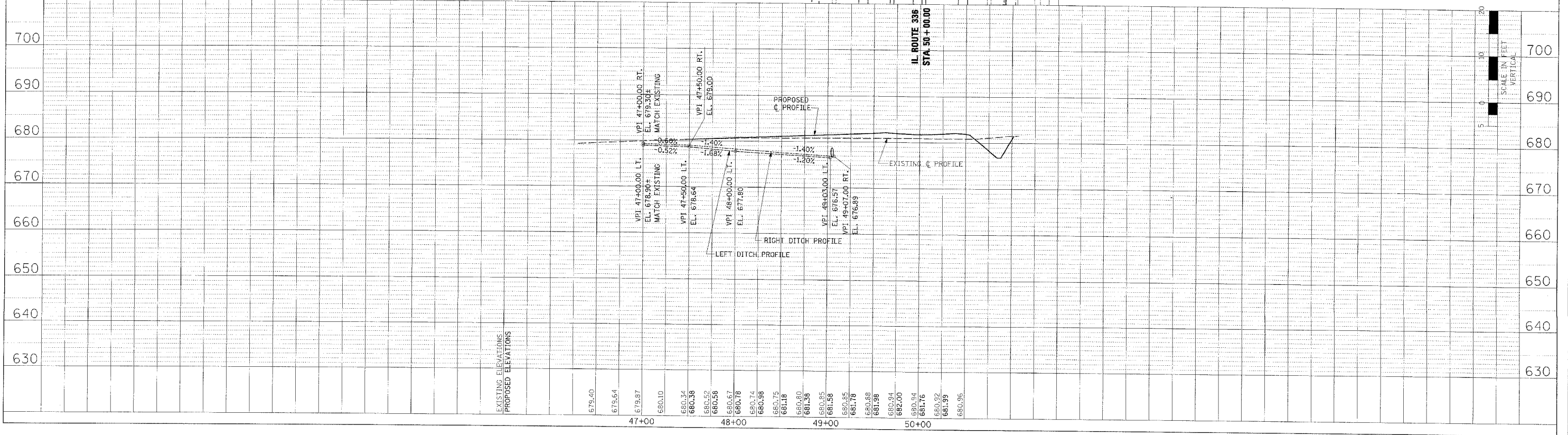
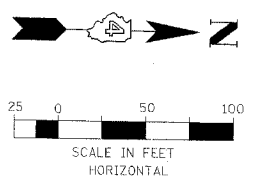
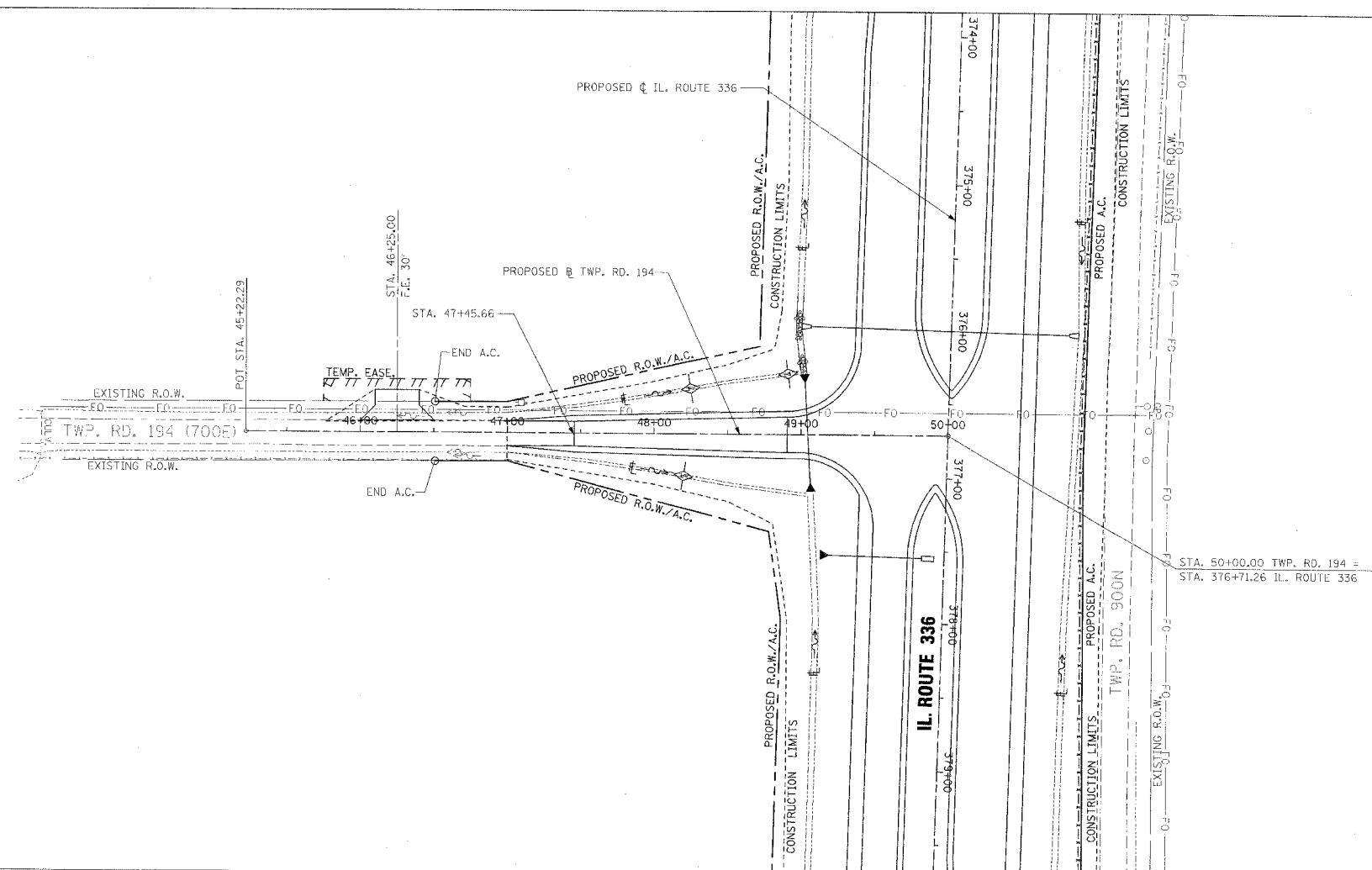


F.A.P. RTE.	SECTION	COUNTY	TOTAL SHEETS	SHEET NO.
315	55-2	McDONOUGH	1025	363

STA. 46+00 TO STA. 51+15.22

FED. ROAD DIST. NO. 4 ILLINOIS FED. AID PROJECT

- TEMPORARY EROSION CONTROL LEGEND
- TEMPORARY DITCH CHECK
  - INLET AND PIPE PROTECTION
  - EROSION CONTROL BLANKET
  - HEAVY DUTY EROSION CONTROL BLANKET
  - AGGREGATE DITCH (TO BE PLACED UPON COMPLETION OF DITCH CUT)
  - PERIMETER EROSION BARRIER



EROSION CONTROL PLAN AND PROFILE - TWP. RD. 194 - STA. 46+00 TO STA. 51+15.22

DATE	BY

DESIGNED BY  
 CHECKED BY  
 ALIGNED BY  
 PLOTTED BY  
 NOTE BOOK NO.  
 PAPER FILE NAME

DATE	BY

PROFILL NUMBERED  
 PLOTTED BY  
 NOTE BOOK NO.  
 STRUCTURE INSTALLED  
 STRUCTURE INSTANT'S OFFICER