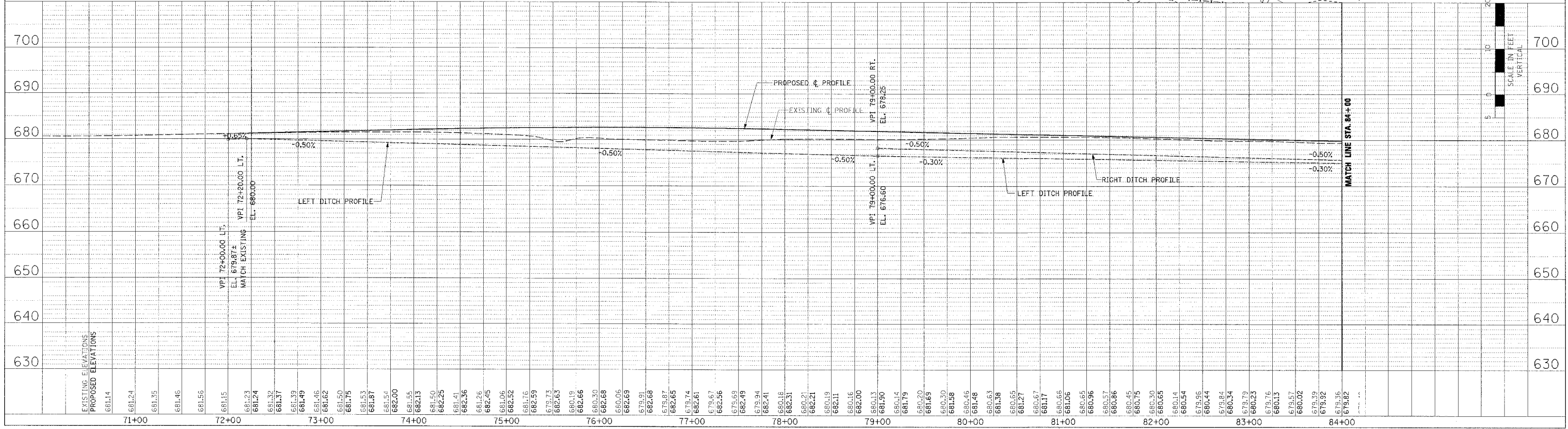
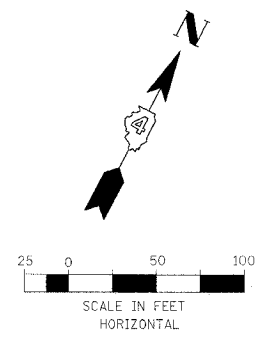
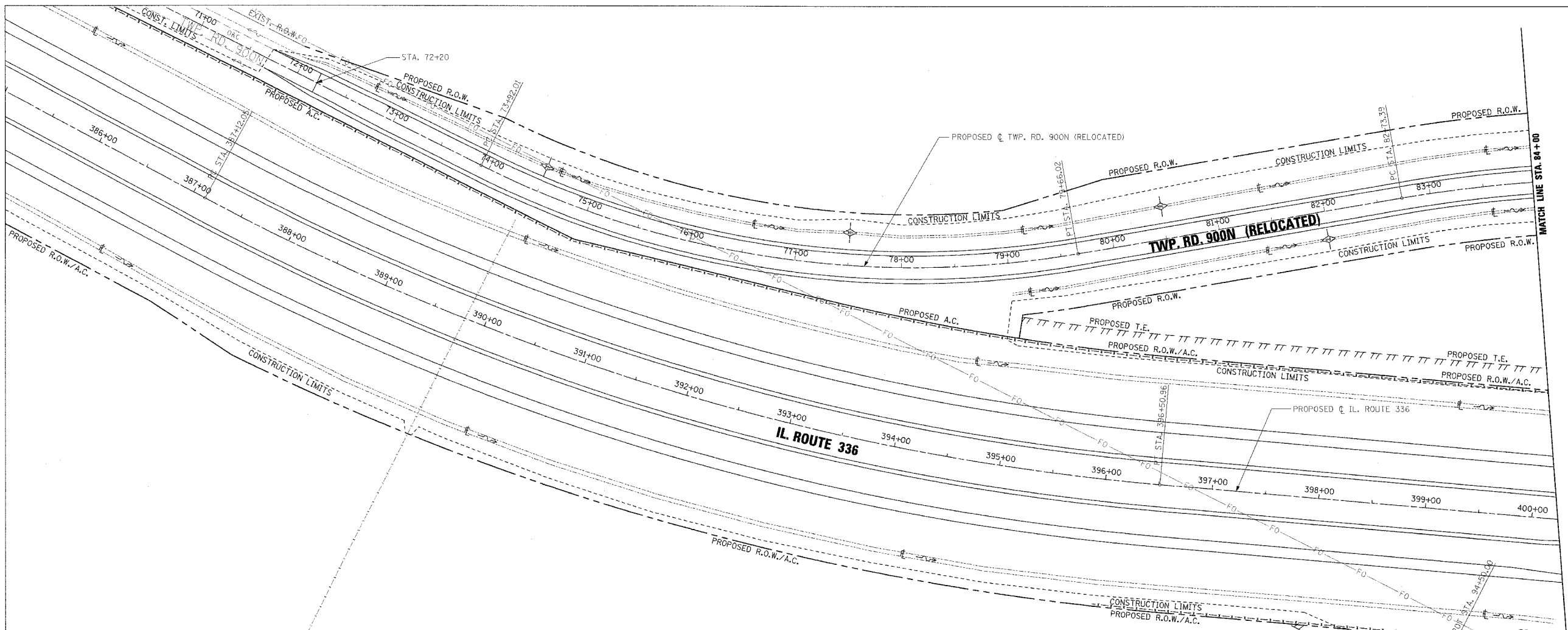


F.A.P. RTE.	SECTION	COUNTY	TOTAL SHEETS	SHEET NO.
315	55-2	MCDONOUGH	1025	364
STA. 71+00 TO STA. 84+00				
FED. ROAD DIST. NO. 4 ILLINOIS FED. AID PROJECT				

- TEMPORARY EROSION CONTROL LEGEND
- TEMPORARY DITCH CHECK
 - INLET AND PIPE PROTECTION
 - EROSION CONTROL BLANKET
 - HEAVY DUTY EROSION CONTROL BLANKET
 - AGGREGATE DITCH (TO BE PLACED UPON COMPLETION OF DITCH CUT)
 - PERIMETER EROSION BARRIER



EROSION CONTROL PLAN AND PROFILE - TWP. RD. 900N (RELOCATED) - STA. 71+00 TO STA. 84+00

PLAN	DATE	BY
REVISIONS		
NO. 1		
NO. 2		
NO. 3		
NO. 4		
NO. 5		
NO. 6		
NO. 7		
NO. 8		
NO. 9		
NO. 10		

PROFILE	DATE	BY
REVISIONS		
NO. 1		
NO. 2		
NO. 3		
NO. 4		
NO. 5		
NO. 6		
NO. 7		
NO. 8		
NO. 9		
NO. 10		