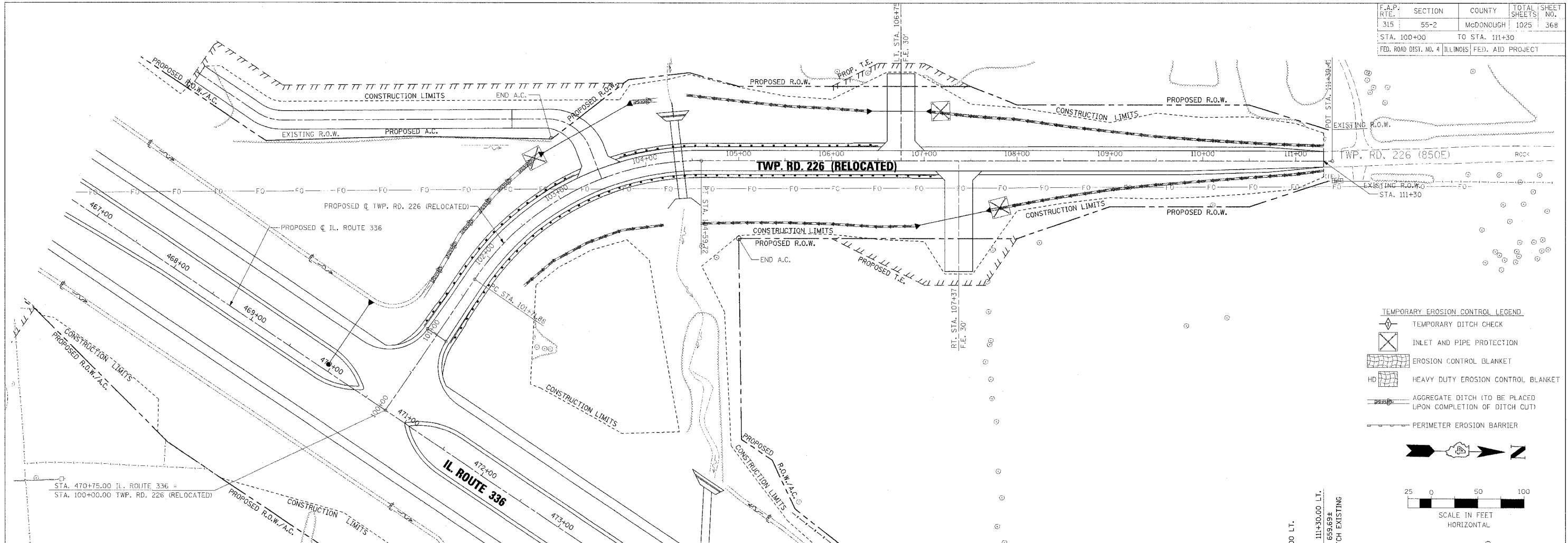


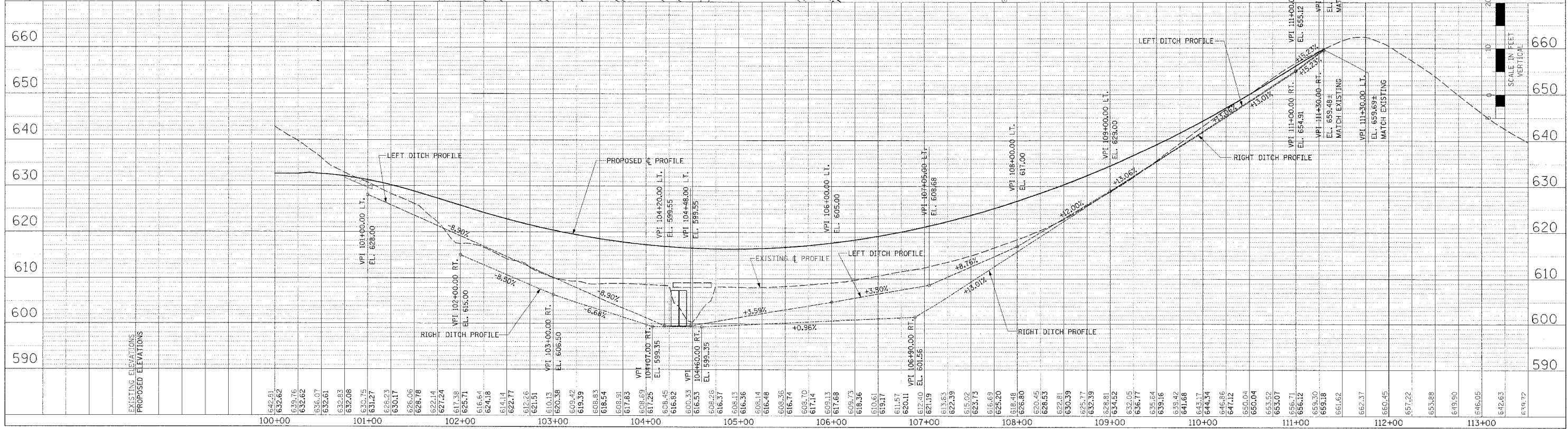
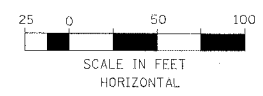
F.A.P. RT.:	SECTION	COUNTY	TOTAL SHEETS	SHEET NO.
315	55-2	MCDONOUGH	1025	368
STA. 100+00		TO STA. 111+30		
FED. ROAD DIST. NO. 4 ILLINOIS FED. AID PROJECT				

P. AN	DATE
REVISION	DATE
BY	DATE
NO.	DATE

PROFILE NUMBER	DATE
PLotted	DATE
BY	DATE
NO.	DATE



- TEMPORARY EROSION CONTROL LEGEND**
- TEMPORARY DITCH CHECK
  - INLET AND PIPE PROTECTION
  - EROSION CONTROL BLANKET
  - HEAVY DUTY EROSION CONTROL BLANKET
  - AGGREGATE DITCH (TO BE PLACED UPON COMPLETION OF DITCH CUT)
  - PERIMETER EROSION BARRIER



**EROSION CONTROL PLAN AND PROFILE - TWP. RD. 226 (RELOCATED) - STA. 100+00 TO STA. 111+30**