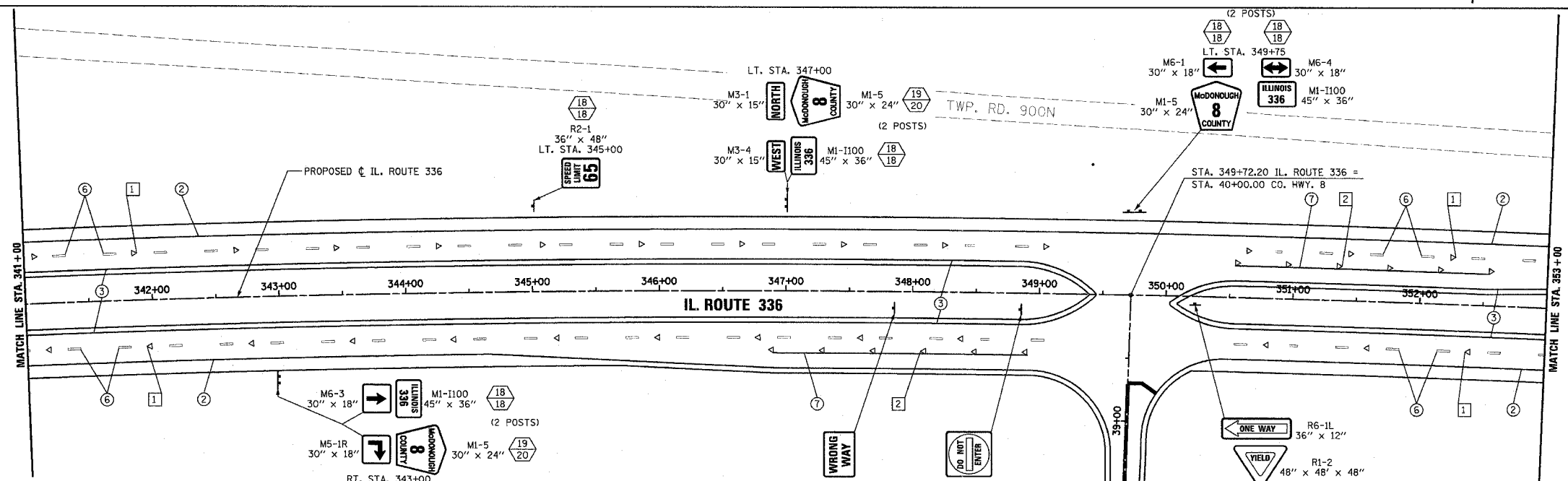
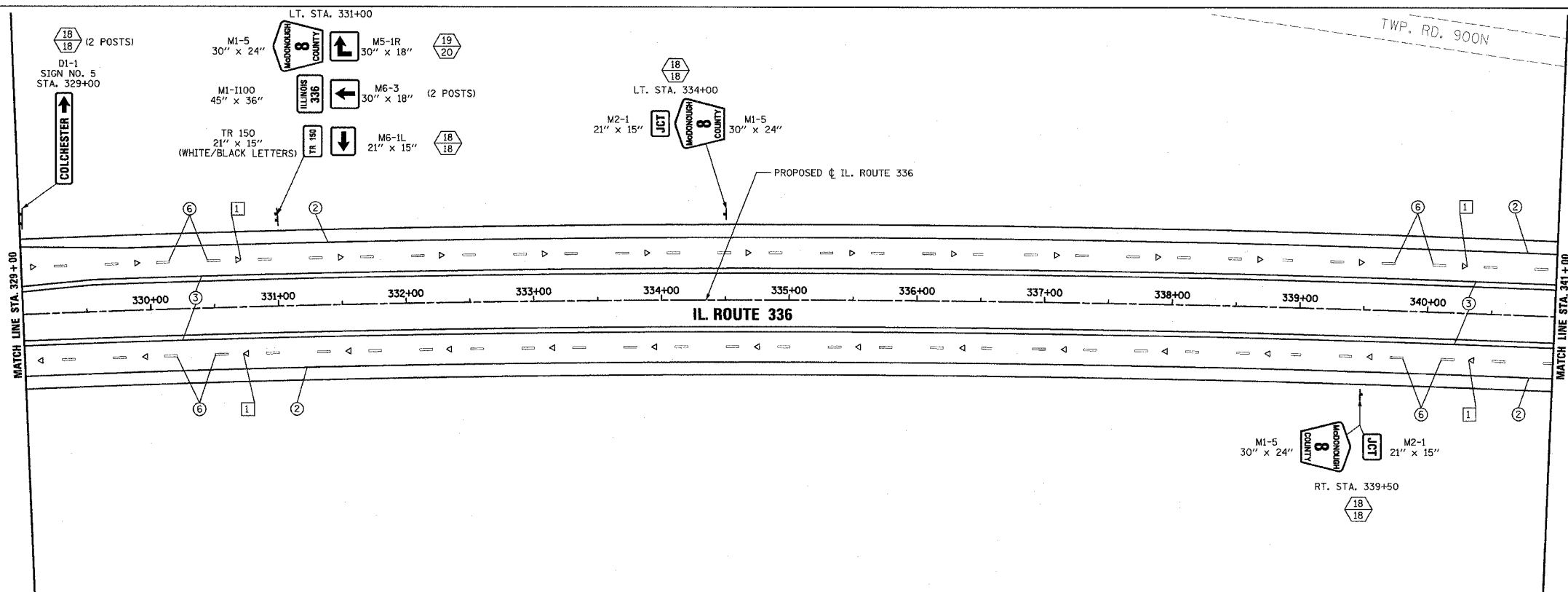


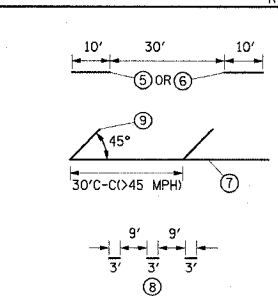
F.A.P. RTE.	SECTION	COUNTY	TOTAL SHEETS	SHEET NO.
315	55-2	McDONOUGH	1025	399
STA. 329+00		TO STA. 353+00		
FED. ROAD DIST. NO. 4 ILLINOIS FED. AID PROJECT				



PAVEMENT MARKING LEGEND

- ① EPOXY PAVEMENT MARKING - LETTERS AND SYMBOLS
- ② EPOXY PAVEMENT MARKING - LINE 4" WHITE SOLID
- ③ EPOXY PAVEMENT MARKING - LINE 4" YELLOW SOLID
- ④ EPOXY PAVEMENT MARKING - LINE 4" YELLOW SOLID (DOUBLE LINE)
- ⑤ EPOXY PAVEMENT MARKING - LINE 4" YELLOW SKIP DASH
- ⑥ PREFORMED PLASTIC PAVEMENT MARKING - LINE 6" WHITE SKIP DASH
- ⑦ EPOXY PAVEMENT MARKING - LINE 8" WHITE SOLID
- ⑧ EPOXY PAVEMENT MARKING - LINE 8" WHITE SKIP DASH
- ⑨ EPOXY PAVEMENT MARKING - LINE 12" WHITE SOLID
- ⑩ EPOXY PAVEMENT MARKING - LINE 12" YELLOW SOLID
- ⑪ EPOXY PAVEMENT MARKING - LINE 24" WHITE SOLID (STOP BAR)

1. PAVEMENT MARKINGS SHALL BE IN ACCORDANCE WITH DISTRICT CADD DETAILS - STANDARD 780001.



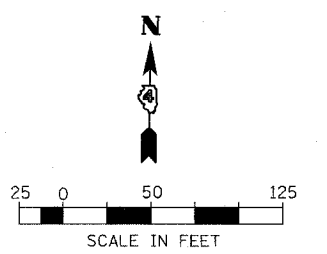
RAISED REFLECTIVE PAVEMENT MARKERS (RRPM) LEGEND

- ① ▲ ONE-WAY CRYSTAL MARKER AT 80' CENTERS
- ② ▲ ONE-WAY CRYSTAL MARKER AT 40' CENTERS
- ③ ▲ ONE-WAY CRYSTAL MARKER AT 20' CENTERS
- ④ ▲ ONE-WAY AMBER MARKER AT 40' CENTERS
- ⑤ ▲ ONE-WAY AMBER MARKER AT 20' CENTERS
- ⑥ ◆ TWO-WAY AMBER MARKER AT 40' CENTERS

SIGN POST LEGEND

WOOD POST LENGTH

OFFSET FROM EDGE OF PAVEMENT



REVISIONS	
NAME	DATE

ILLINOIS DEPARTMENT OF TRANSPORTATION

PAVEMENT MARKING AND SIGNING

IL. ROUTE 336

STA. 329+00 TO STA. 353+00

DATE 3/30/06

DRAWN BY

CHECKED BY

FOR FURTHER INTERSECTION SIGNING INFORMATION SEE SHEET

3/30/06 10:50 AM