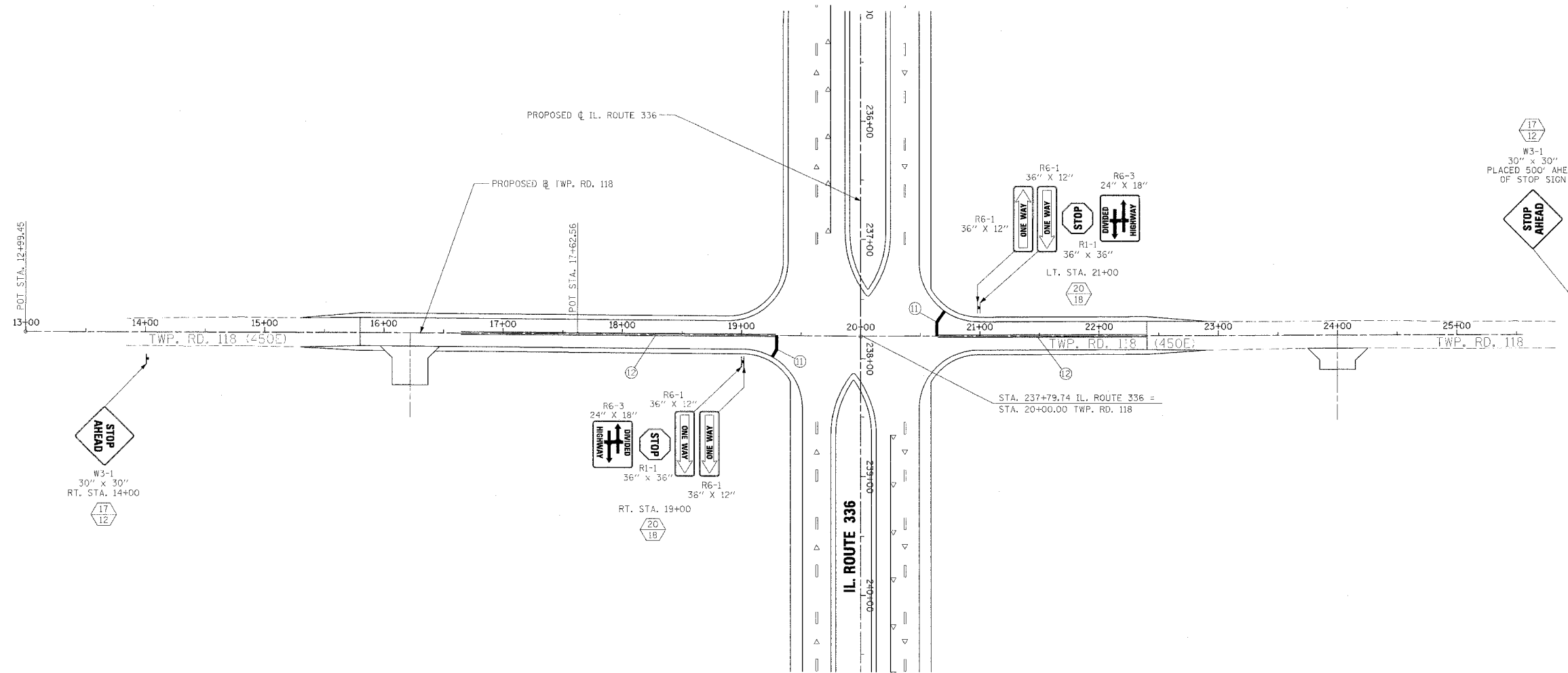


F.A.P. RTE.	SECTION	COUNTY	TOTAL SHEETS	SHEET NO.
315	55-2	McDONOUGH	1025	414
STA. 16+00		TO STA. 24+00		
FED. ROAD DIST. NO. 4 ILLINOIS FED. AID PROJECT				



PAVEMENT MARKING LEGEND

① EPOXY PAVEMENT MARKING - LINE 24" WHITE SOLID (STOP BAR)

② PAINT PAVEMENT MARKING - LINE 4" YELLOW SOLID (DOUBLE LINE)

RAISED REFLECTIVE PAVEMENT MARKERS (RRPM) LEGEND

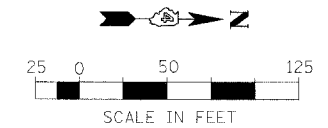
- ① ▲ ONE-WAY CRYSTAL MARKER AT 80' CENTERS
- ② ▲ ONE-WAY CRYSTAL MARKER AT 40' CENTERS
- ③ ▲ ONE-WAY CRYSTAL MARKER AT 20' CENTERS
- ④ ▲ ONE-WAY AMBER MARKER AT 40' CENTERS
- ⑤ ▲ ONE-WAY AMBER MARKER AT 20' CENTERS
- ⑥ ◆ TWO-WAY AMBER MARKER AT 40' CENTERS

SIGN POST LEGEND

WOOD POST LENGTH

OFFSET FROM EDGE OF PAVEMENT

1. PAVEMENT MARKINGS SHALL BE IN ACCORDANCE WITH DISTRICT CADD DETAILS - STANDARD 780001.



REVISIONS	
NAME	DATE

ILLINOIS DEPARTMENT OF TRANSPORTATION

PAVEMENT MARKING AND SIGNING

TWP. RD 118

STA. 16+00 TO STA. 24+00

DRAWN BY
CHECKED BY

DATE 3/30/06