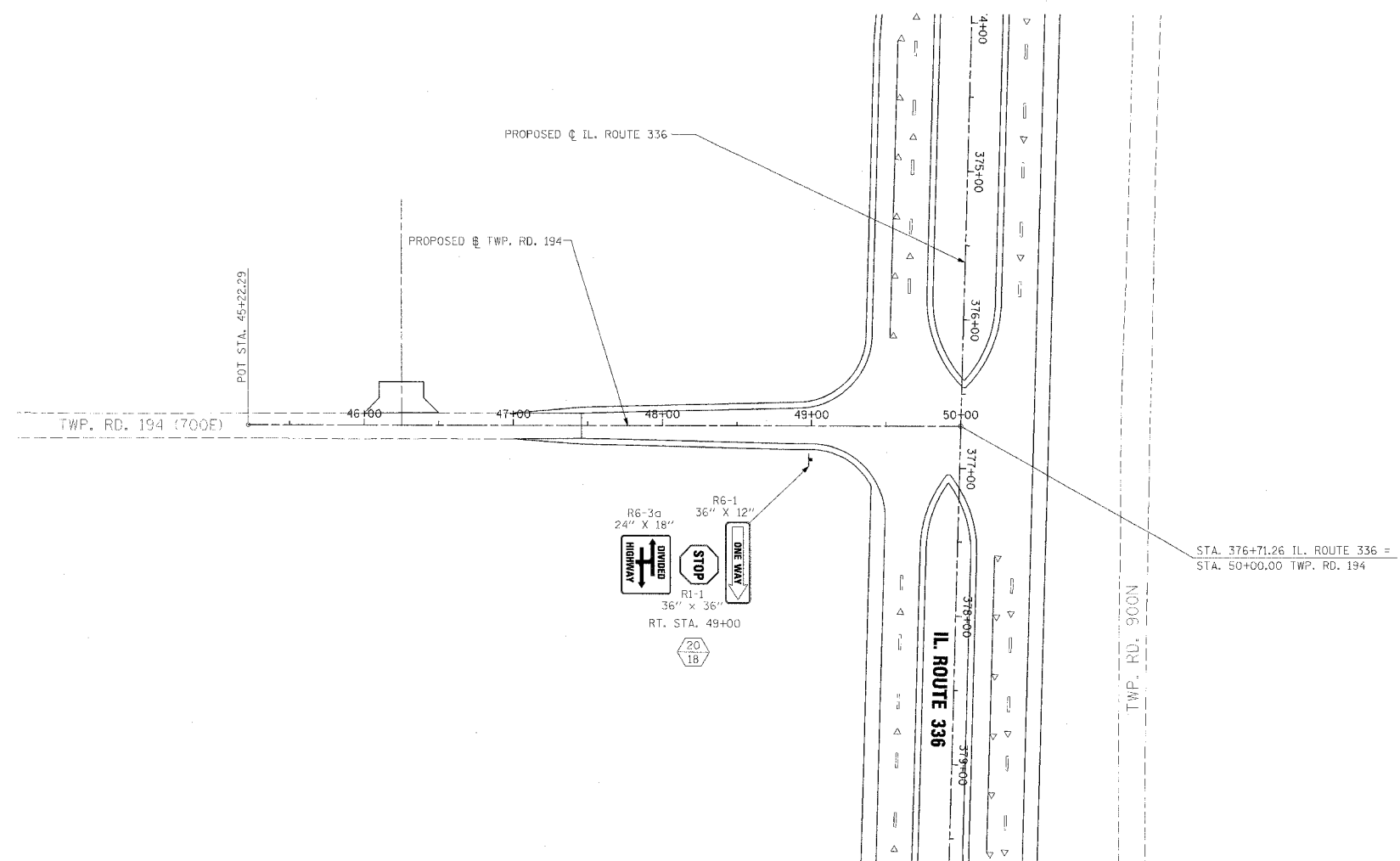


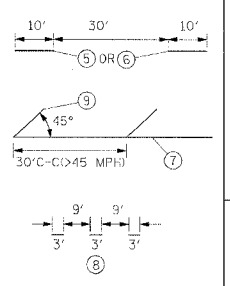
|   |         |               |              |           |
|---|---------|---------------|--------------|-----------|
| F.A.P. RTE.                                     | SECTION | COUNTY        | TOTAL SHEETS | SHEET NO. |
| 315   | 55-2    | McDONOUGH     | 1025         | 416       |
| STA. 47+00                                      |         | TO STA. 50+00 |              |           |
| FED. ROAD DIST. NO. 4 ILLINOIS FED. AID PROJECT |         |               |              |           |



**PAVEMENT MARKING LEGEND**

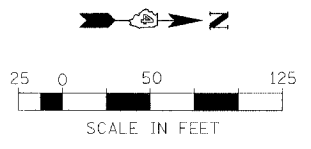
- ① EPOXY PAVEMENT MARKING - LETTERS AND SYMBOLS
- ② EPOXY PAVEMENT MARKING - LINE 4" WHITE SOLID
- ③ EPOXY PAVEMENT MARKING - LINE 4" YELLOW SOLID
- ④ EPOXY PAVEMENT MARKING - LINE 4" YELLOW SOLID (DOUBLE LINE)
- ⑤ EPOXY PAVEMENT MARKING - LINE 4" YELLOW SKIP DASH
- ⑥ PREFORMED PLASTIC PAVEMENT MARKING - LINE 6" WHITE SKIP DASH
- ⑦ EPOXY PAVEMENT MARKING - LINE 8" WHITE SOLID
- ⑧ EPOXY PAVEMENT MARKING - LINE 8" WHITE SKIP DASH
- ⑨ EPOXY PAVEMENT MARKING - LINE 12" WHITE SOLID
- ⑩ EPOXY PAVEMENT MARKING - LINE 12" YELLOW SOLID
- ⑪ EPOXY PAVEMENT MARKING - LINE 24" WHITE SOLID (STOP BAR)

1. PAVEMENT MARKINGS SHALL BE IN ACCORDANCE WITH DISTRICT CADD DETAILS - STANDARD 780001.



**RAISED REFLECTIVE PAVEMENT MARKERS (RRPM) LEGEND**

- ① ▲ ONE-WAY CRYSTAL MARKER AT 80' CENTERS
- ② ▲ ONE-WAY CRYSTAL MARKER AT 40' CENTERS
- ③ ▲ ONE-WAY CRYSTAL MARKER AT 20' CENTERS
- ④ ▲ ONE-WAY AMBER MARKER AT 40' CENTERS
- ⑤ ▲ ONE-WAY AMBER MARKER AT 20' CENTERS
- ⑥ ◆ TWO-WAY AMBER MARKER AT 40' CENTERS



| REVISIONS |      |
|-----------|------|
| NAME      | DATE |
|           |      |
|           |      |
|           |      |
|           |      |
|           |      |
|           |      |
|           |      |
|           |      |
|           |      |
|           |      |

ILLINOIS DEPARTMENT OF TRANSPORTATION  
**PAVEMENT MARKING AND SIGNING**  
**TWP. RD.194**  
**STA. 47+00 TO STA. 50+00**

DATE 3/30/06  
DRAWN BY  
CHECKED BY