

Benchmark: Chiseled "□" on W. Headwall of Box Culvert (N. End) 1.2 miles S. of Rte. 136 on 850 E Elevation = 610.51

Existing Structure: None

STATE OF ILLINOIS
DEPARTMENT OF TRANSPORTATION

ROUTE NO.	SECTION	COUNTY	SHEET NO.	SHEET
F.A.P. 315	55-2	McDONOUGH	1025	435
FED. ROAD DIST. NO. 4		ILLINOIS	FED. AID PROJECT	

Contract No. 68205

INDEX OF SHEETS

- Sheet
- 1 General Plan & Elevation
 - 2 Section, General Notes, & Total Bill of Material
 - 3 Plan & Elevation
 - 4 Apron & Weir Wall Details
 - 5 Reinforcement Bars
 - 6-7 Boring Logs

SIEMIC DATA

Seismic Performance Category (SPC) = A
Bedrock Acceleration Coefficient (A) = 4.0% g
Site Coefficient (S) = 1.0

LOADING HS20-44

Allow 50#/sq. ft. for future wearing surface.

DESIGN SPECIFICATIONS

2002 AASHTO

DESIGN STRESSES

FIELD UNITS

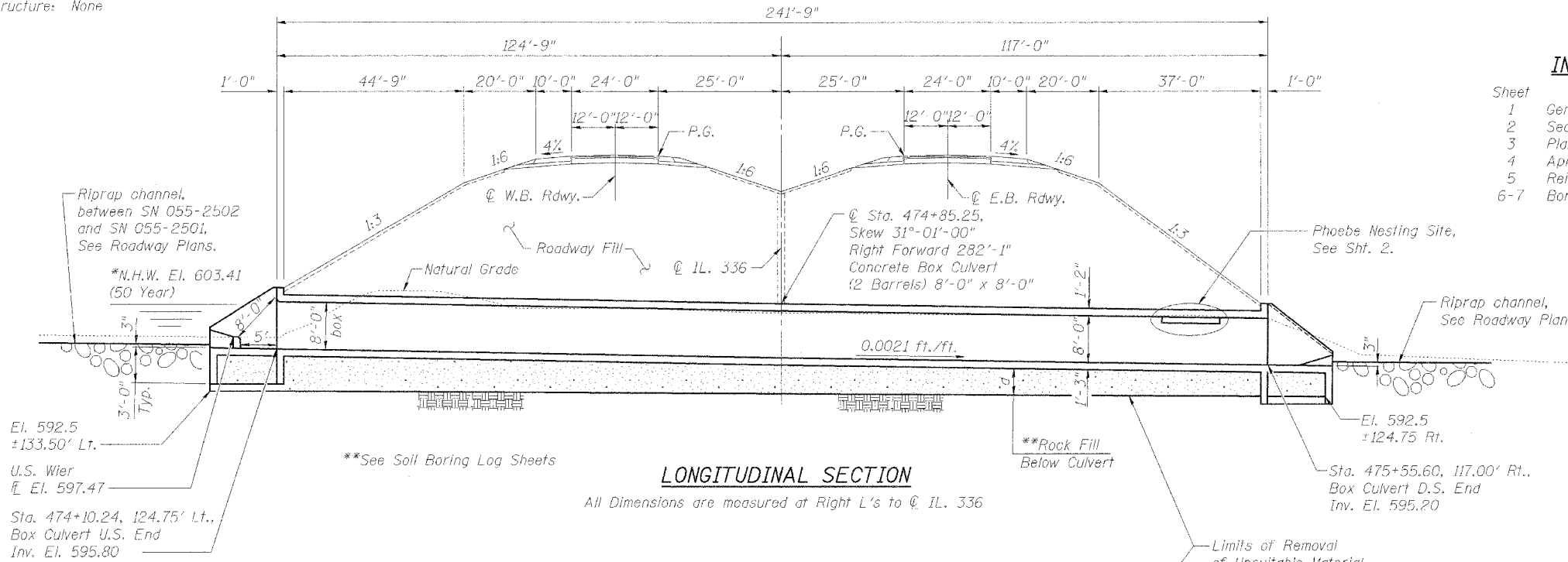
$f'_c = 3,500$ psi
 $f_y = 60,000$ psi (Reinf.)

WATERWAY INFORMATION

Drainage Area = 1.33 sq. mi. Low Grade Elev. 616.98 @ Sta. 479+53.10

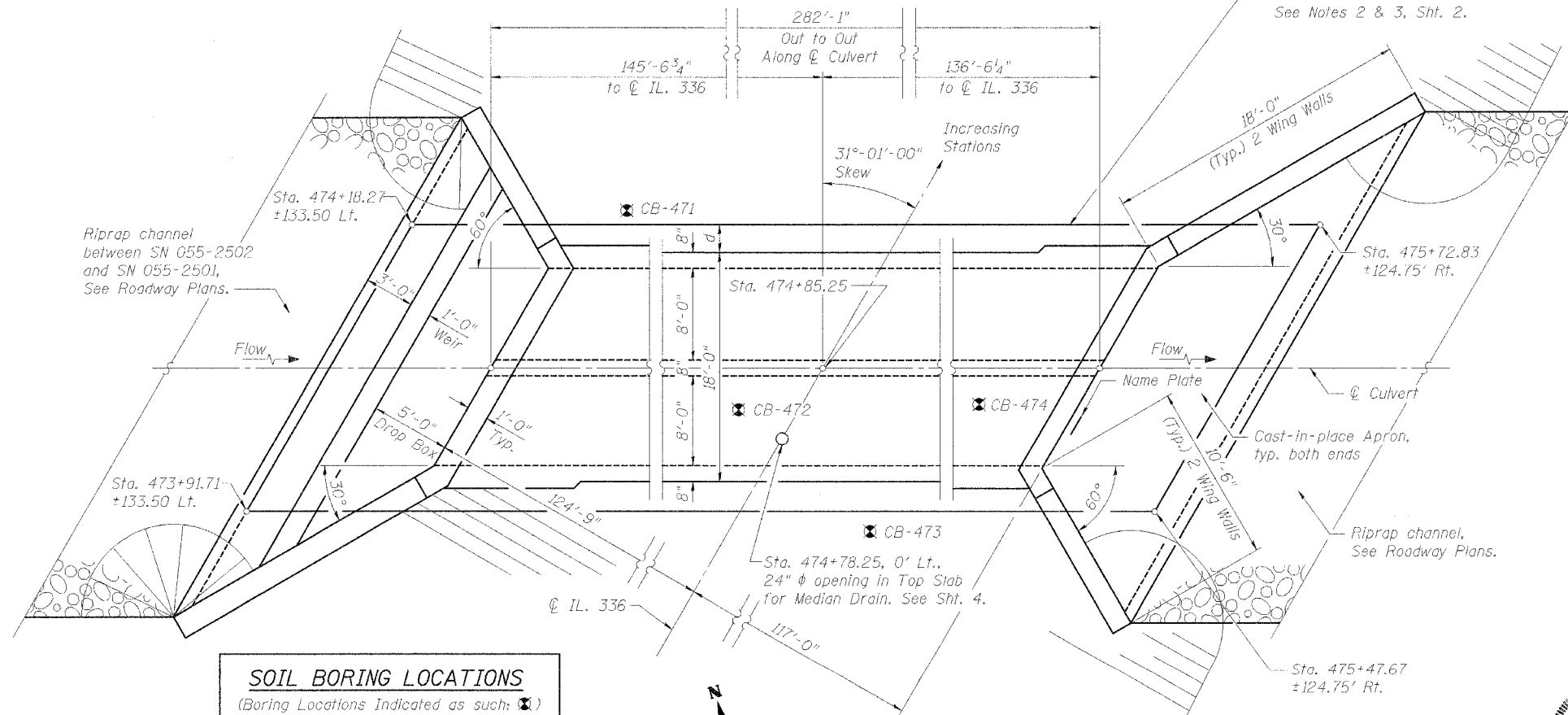
Flood	Freq. Yr.	Q C.F.S.	Opening Sq. Ft.		*Nat. H.W.E.	Head - Ft.		Headwater El.	
			Exist.	Prop.		Exist.	Prop.	Exist.	Prop.
Design	50	857	-	128	603.41	-	0.28	-	603.69
Base	100	1007	-	128	603.60	-	0.85	-	604.45
Overtopping	-	-	-	-	-	-	-	-	-
Max. Calc.	500	1218	-	128	603.86	-	1.69	-	605.55

* upstream face of culvert



LONGITUDINAL SECTION

All Dimensions are measured at Right L's to CL 336



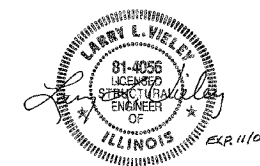
PLAN

STATION 474+85.25
BUILT 200_ BY
STATE OF ILLINOIS
F.A.P. RT. 315 SEC. 55-2
LOADING HS20
STR. NO. 055-2501

NAME PLATES
(See Std. 515001)

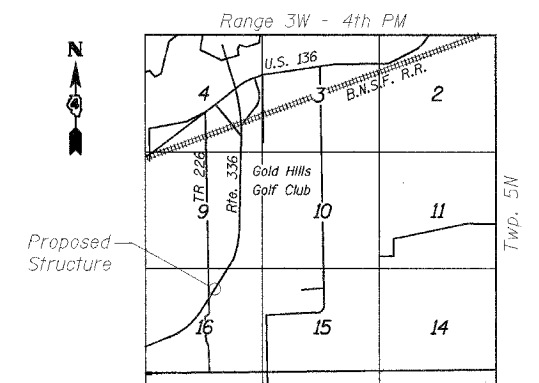
APPROVED
FOR STRUCTURAL ADEQUACY ONLY

Ralph E. Anderson
ENGINEER OF BRIDGES AND STRUCTURES



Larry L. Vieley
Illinois Licensed Structural Engineer
NO. 081-004056
License Expires: November 30, 2006

Date: 3/30/2006



LOCATION SKETCH

GENERAL PLAN & ELEVATION
IL. ROUTE 336 OVER
TRIBUTARY TO KILLJORDAN CREEK
IL. ROUTE 336
F.A.P. ROUTE 315 SECT. 55-2
McDONOUGH COUNTY
STATION 474+85.25
STRUCTURE NO. 055-2501



DESIGNED	LLV
CHECKED	PJL
DRAWN	MGM
CHECKED	LLV

SOIL BORING LOCATIONS

(Boring Locations Indicated as such: ⊗)

- ⊗ CB-471 Sta. 474+30.15 120' Lt. (N.T.S.)
- ⊗ CB-472 Sta. 474+54.10 38.4' Lt. (N.T.S.)
- ⊗ CB-473 Sta. 474+90.84 45.3' Rt. (N.T.S.)
- ⊗ CB-474 Sta. 475+47.27 109.3' Rt. (N.T.S.)