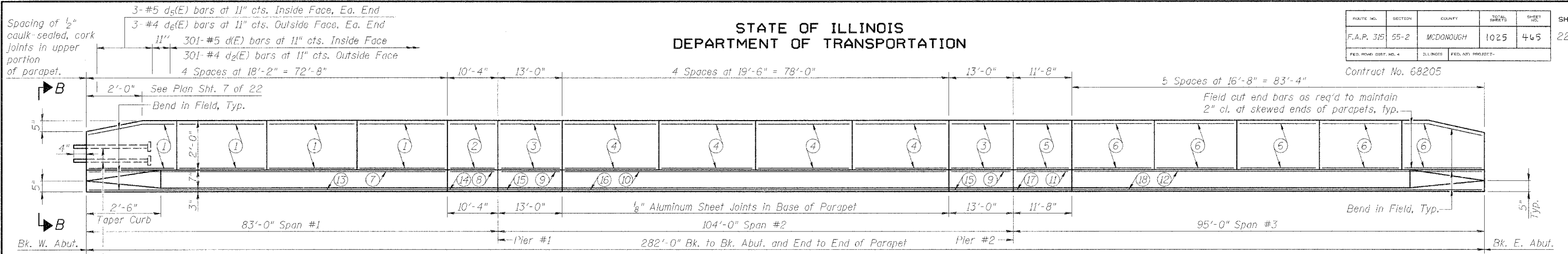


STATE OF ILLINOIS
DEPARTMENT OF TRANSPORTATION

ROUTE NO.	SECTION	COUNTY	TOTAL SHEETS	SHEET NO.
F.A.P. 315	55-2	MCDONOUGH	1025	465
FED. ROAD DIST. NO. 4		ILLINOIS	FED. AID PROJECT	

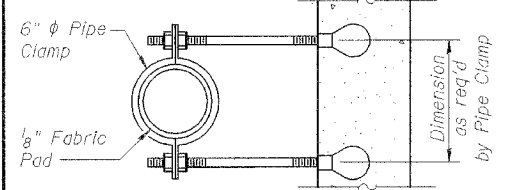
SHEET NO. 9
22 SHEETS



1" φ Anchor Bolts. Cost included with Concrete Superstructure At exit end only. N & S Parapets (E. End EB, W. End WB)

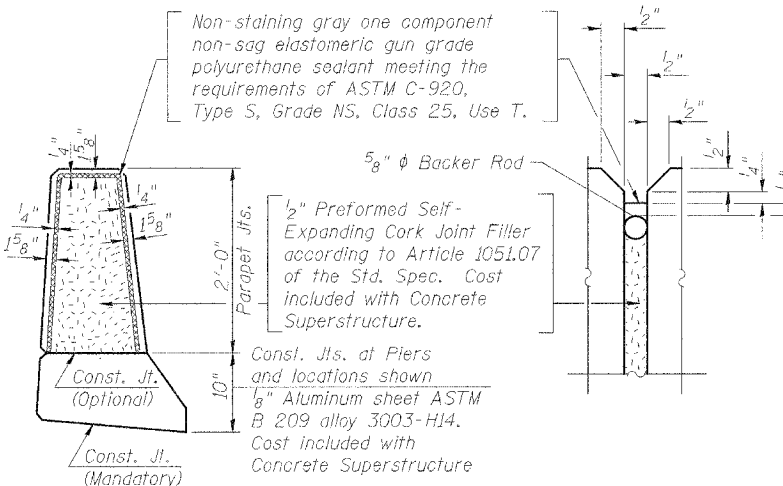
PARAPET HORIZONTAL REINFORCEMENT CALLOUTS
Reinforcement shall not pass thru joints.

Top of Parapet 3-#4 bars each face	① 3-#4 e ₁ (E) Bars Each Face, Typ. 4 Panels ② 3-#4 e ₁ (E) Bars Each Face ③ 3-#4 e ₂ (E) Bars Each Face ④ 3-#4 e ₃ (E) Bars Each Face, Typ. 4 Panels ⑤ 3-#4 e ₄ (E) Bars Each Face ⑥ 3-#4 e ₅ (E) Bars Each Face, Typ. 5 Panels
Top of Curb 2-#8 bars lap 4'-6"	⑦ 1 x 2-#8 e ₆ (E) Bars Each Face ⑧ 1-#8 e ₇ (E) Bar Each Face ⑨ 1-#8 e ₈ (E) Bar Each Face ⑩ 1 x 3-#8 e ₉ (E) Bars Each Face ⑪ 1-#8 e ₁₀ (E) Bar Each Face ⑫ 1 x 3-#8 e ₁₁ (E) Bars Each Face
Bottom of Curb 2-#5 bars lap 2'-2"	⑬ 1 x 2-#5 e ₁₂ (E) Bars Each Face ⑭ 1-#5 e ₁₃ (E) Bar Each Face ⑮ 1-#5 e ₁₄ (E) Bar Each Face ⑯ 1 x 2-#5 e ₁₅ (E) Bars Each Face ⑰ 1-#5 e ₁₆ (E) Bar Each Face ⑱ 1 x 3-#5 e ₁₇ (E) Bars Each Face



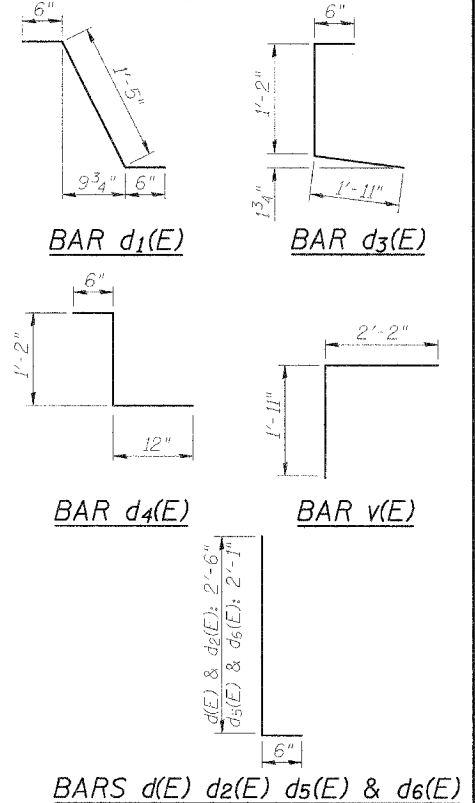
SECTION A-A

INSIDE ELEVATION OF PARAPET
Dimensions given along curb line at base of parapet
North parapet shown, South similar



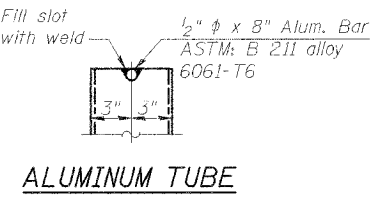
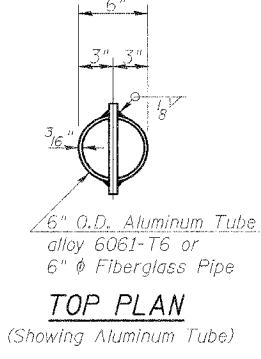
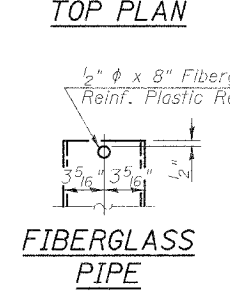
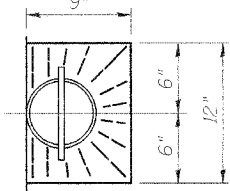
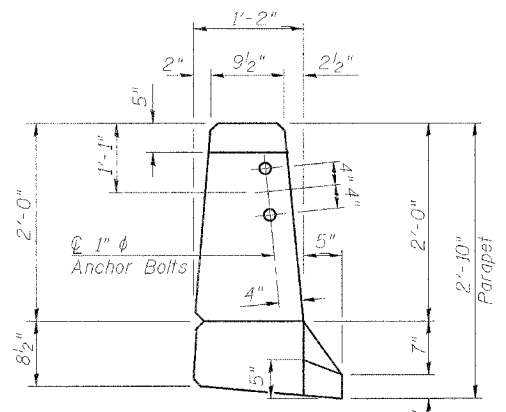
SUPERSTRUCTURE BILL OF MATERIAL
Two Bridges

Bar No.	Size	Length	Shape
a(E)	676	#5 42'-6"	—
a ₁ (E)	676	#5 41'-8"	—
a ₂ (E)	672	#6 4'-6"	—
a ₃ (E)	8	#5 48'-0"	—
b(E)	920	#5 30'-2"	—
b ₁ (E)	344	#6 47'-9"	—
b ₂ (E)	748	#5 27'-7"	—
d(E)	1,204	#5 3'-0"	—
d ₁ (E)	1,204	#5 2'-5"	—
d ₂ (E)	1,204	#4 3'-0"	—
d ₃ (E)	1,228	#4 3'-7"	—
d ₄ (E)	24	#5 2'-8"	—
d ₅ (E)	24	#5 2'-7"	—
d ₆ (E)	24	#4 2'-7"	—
e(E)	96	#4 17'-10"	—
e ₁ (E)	24	#4 10'-0"	—
e ₂ (E)	48	#4 12'-8"	—
e ₃ (E)	96	#4 19'-2"	—
e ₄ (E)	24	#4 11'-4"	—
e ₅ (E)	120	#4 16'-4"	—
e ₆ (E)	16	#8 38'-5"	—
e ₇ (E)	8	#8 10'-0"	—
e ₈ (E)	16	#8 12'-8"	—
e ₉ (E)	24	#8 28'-11"	—
e ₁₀ (E)	8	#8 11'-4"	—
e ₁₁ (E)	24	#8 30'-8"	—
e ₁₂ (E)	16	#5 37'-3"	—
e ₁₃ (E)	8	#5 10'-0"	—
e ₁₄ (E)	16	#5 12'-8"	—
e ₁₅ (E)	16	#5 39'-11"	—
e ₁₆ (E)	8	#5 11'-4"	—
e ₁₇ (E)	24	#5 29'-2"	—
m(E)	16	#6 25'-3"	—
m ₁ (E)	24	#6 26'-2"	—
m ₂ (E)	64	#6 8'-7"	—
m ₃ (E)	84	#6 3'-6"	—
m ₄ (E)	8	#6 2'-5"	—
m ₅ (E)	168	#4 5'-1"	—
m ₆ (E)	32	#8 5'-10"	—
s(E)	136	#5 6'-0"	—
s ₁ (E)	136	#4 13'-0"	—
s ₂ (E)	112	#4 12'-9"	—
v(E)	168	#5 4'-1"	—



- Floor Drain Notes:**
- 1.) Fiberglass pipe shall conform to ASTM D2996, with short-time rupture strength hoop tensile stress of 30,000 p.s.i. minimum.
 - 2.) The exterior surfaces of the floor drains shall be coated or pigmented by the manufacturer with a color that matches the concrete.
 - 3.) The clamping device and inserts shall be galvanized according to AASHTO M 232.

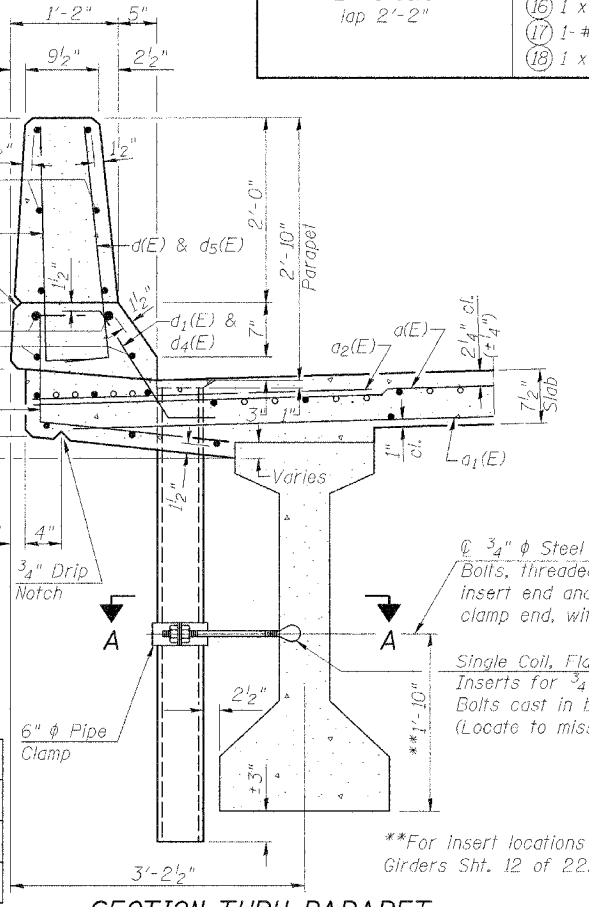
PARAPET JOINT DETAILS



Note: All edges shall have 3/4" chamfer, except as otherwise noted.

DESIGNED	PJL
CHECKED	LLV
DRAWN	MGM
CHECKED	PJL

SECTION THRU PARAPET



BRIDGE PARAPET DETAILS
IL. ROUTE 336 OVER
BURLINGTON NORTHERN
SANTA FE RAILROAD
F.A.P. ROUTE 315 SECT. 55-2
MCDONOUGH COUNTY
STATION 154+56.74
STRUCTURE NO. 055-0052 (EB)
STRUCTURE NO. 055-0053 (WB)

STS CONSULTANTS
111 NE Jefferson Ave.
Peoria, Illinois 61602
Ph (309) 676-8464
FAX (309) 676-5445
IL Design Firm Reg. No. 184-001518

Reinforcement bars designated (E) shall be epoxy coated.