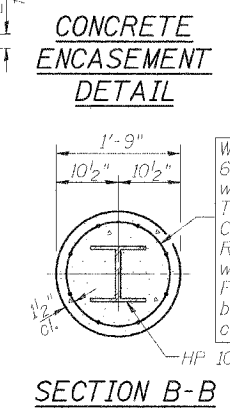
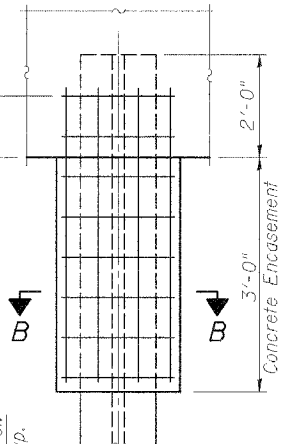
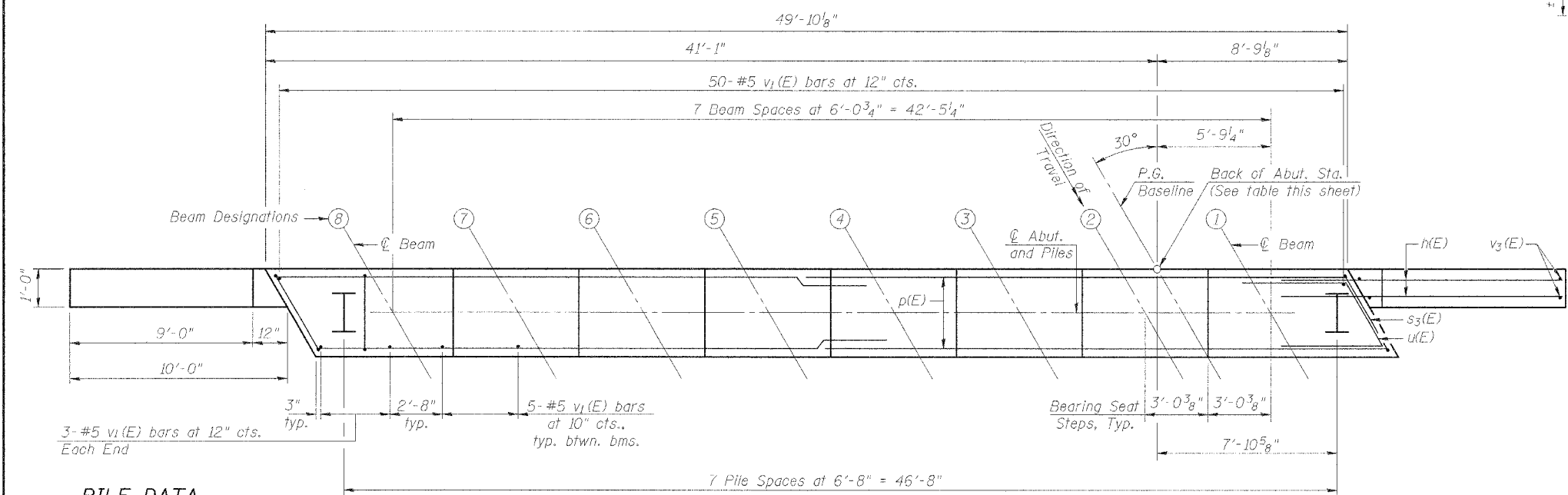
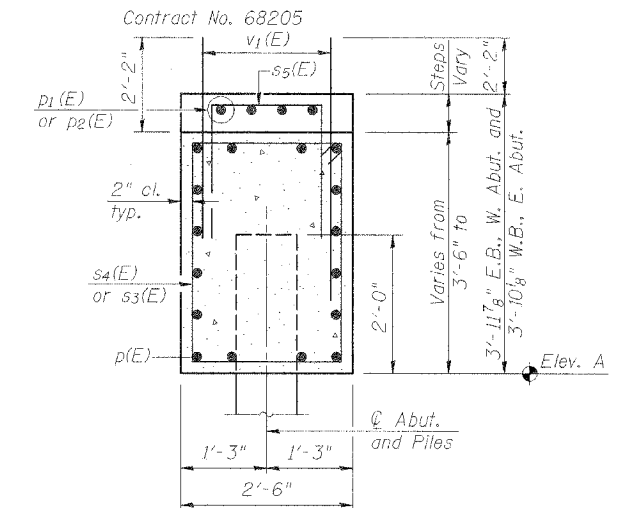
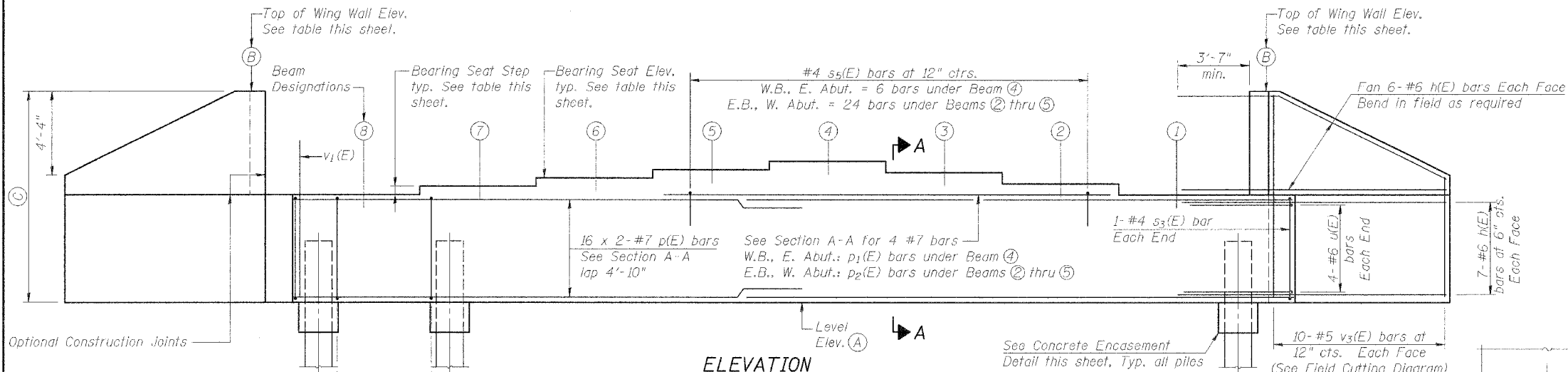


STATE OF ILLINOIS
DEPARTMENT OF TRANSPORTATION

ROUTE NO.	SECTION	COUNTY	DATE	SHEET	SHEET NO. 13
F.A.P. 315	55-2	MCDONOUGH	1025	469	22 SHEETS
FED. ROAD DIST. NO. 4	BLANDED	FED. AID PROJECT			

Notes:

- 1.) Four steps monolithically with cap.
- 2.) Reinforcement bars designated (E) shall be epoxy coated.
- 3.) Bars indicated thus: 16 x 2-#7 etc. indicates 16 lines of bars with 2 lengths per line.



ABUTMENT ELEVATIONS & DIMENSIONS

Location	E.B., W. Abut.		W.B., E. Abut.	
	N. Wing	S. Wing	N. Wing	S. Wing
Bk. of Abut. Sta. on P.G. ②	152+68.66		156+47.99	
① Bottom of Abut. Elev., Level	691.02		693.59	
② Top of Wing Wall Elev.	700.24	699.90	702.49	702.55
③ Wing Wall Height	9'-2 5/8"	8'-10 1/2"	8'-10 3/4"	8'-11 1/2"

BILL OF MATERIAL

(Two Abutments)

Bar	No.	Size	Length	Shape
h(E)	104	#6	13'-5"	
p(E)	64	#7	27'-2"	
D ₁ (E)	4	#7	5'-8"	
D ₂ (E)	4	#7	23'-10"	
s ₃ (E)	4	#4	12'-1"	□
s ₄ (E)	84	#4	11'-5"	□
s ₅ (E)	30	#4	5'-2"	□
u(E)	16	#6	9'-7"	
v ₁ (E)	182	#5	4'-4"	
v ₃ (E)	40	#5	12'-8"	
Concrete Structures		Cu. Yd.	47.1	
Reinforcement Bars, Epoxy Coated		Pound	8,250	
* Structure Excavation		Cu. Yd.	283	
Furnishing Steel Piles HP 10 x 57		Foot	1,272	
Driving Steel Piles		Foot	1,272	

* Estimated Structure Excavation quantity is identical for all abutments.

PILE DATA

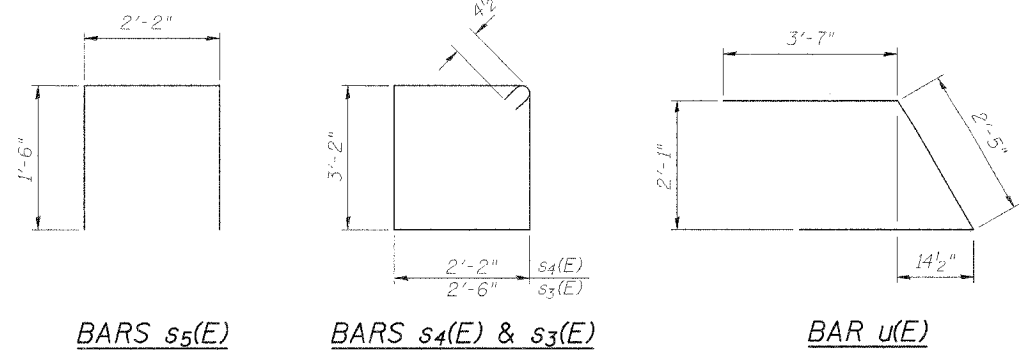
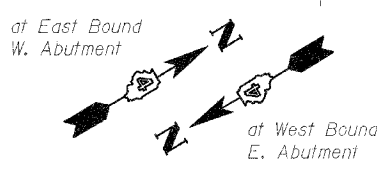
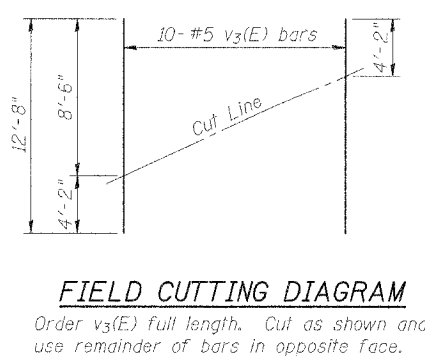
See this sheet for Pile Encasement Detail.

Type:	HP 10x57
Capacity:	Driven to Refusal
Number Required:	8
Estimated Length:	
E.B., W. Abut.	70'
W.B., E. Abut.	89'

BEARING SEATS

Beam	E.B., W. Abutment		W.B., E. Abutment	
	Elevation	Step Ht.	Elevation	Step Ht.
①	694.85	7 7/8"	697.15	1 3/8"
②	694.92	0"	697.26	1 1/8"
③	694.92	1 1/4"	697.35	1"
④	695.02	1 1/4"	697.43	3/4"
⑤	694.92	1 1/2"	697.37	1"
⑥	694.80	1 5/8"	697.29	1 1/8"
⑦	694.67	1 3/4"	697.20	1 3/8"
⑧	694.52		697.09	

DESIGNED	PJL
CHECKED	LLV
DRAWN	MGM
CHECKED	PJL



ABUTMENT DETAILS
IL. ROUTE 336 OVER
BURLINGTON NORTHERN
SANTA FE RAILROAD
F.A.P. ROUTE 315 SECT. 55-2
MCDONOUGH COUNTY
STATION 154+56.74
STRUCTURE NO. 055-0052 (EB)
STRUCTURE NO. 055-0053 (WB)

STS CONSULTANTS
111 NE Jefferson Ave.
Peoria, Illinois 61602
Ph (309) 676-8464
FAX (309) 676-5445
IL Design Firm Reg. No. 184-001518