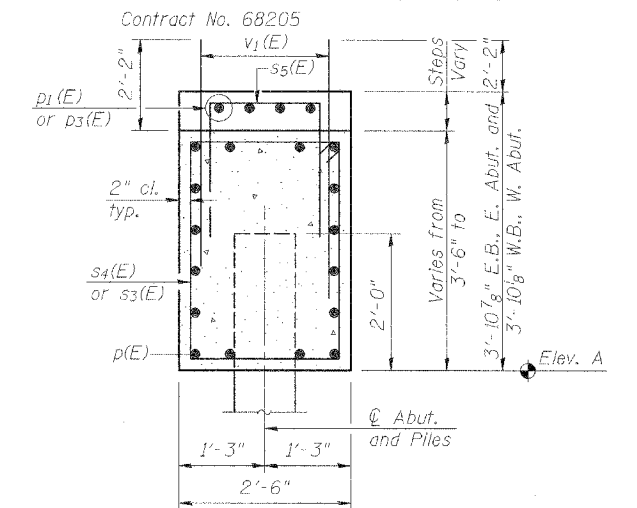
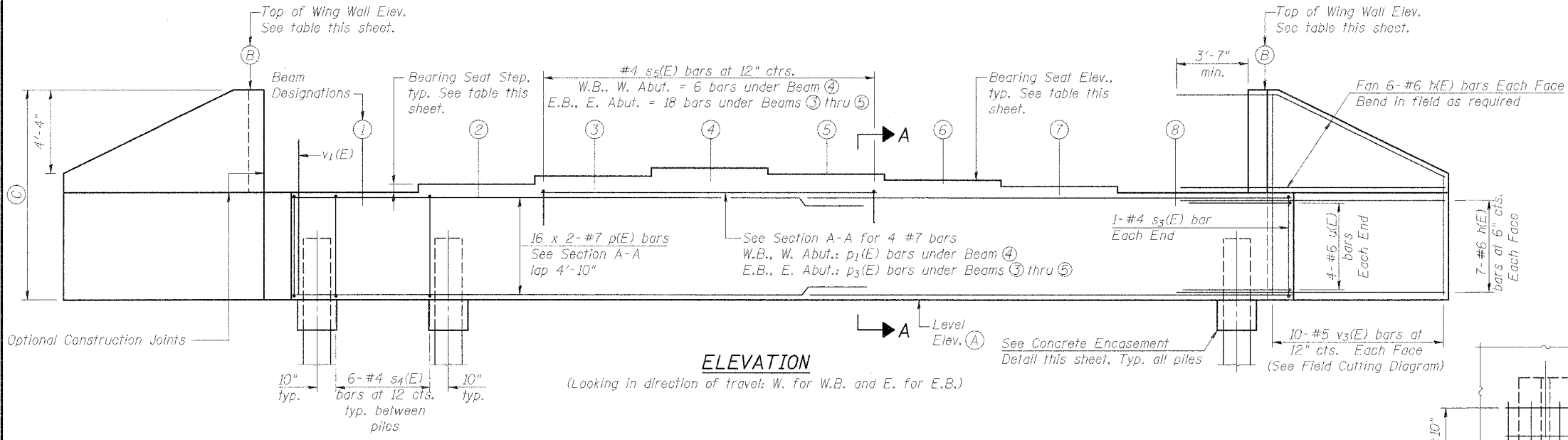


STATE OF ILLINOIS
DEPARTMENT OF TRANSPORTATION

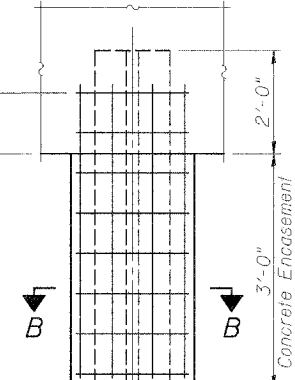
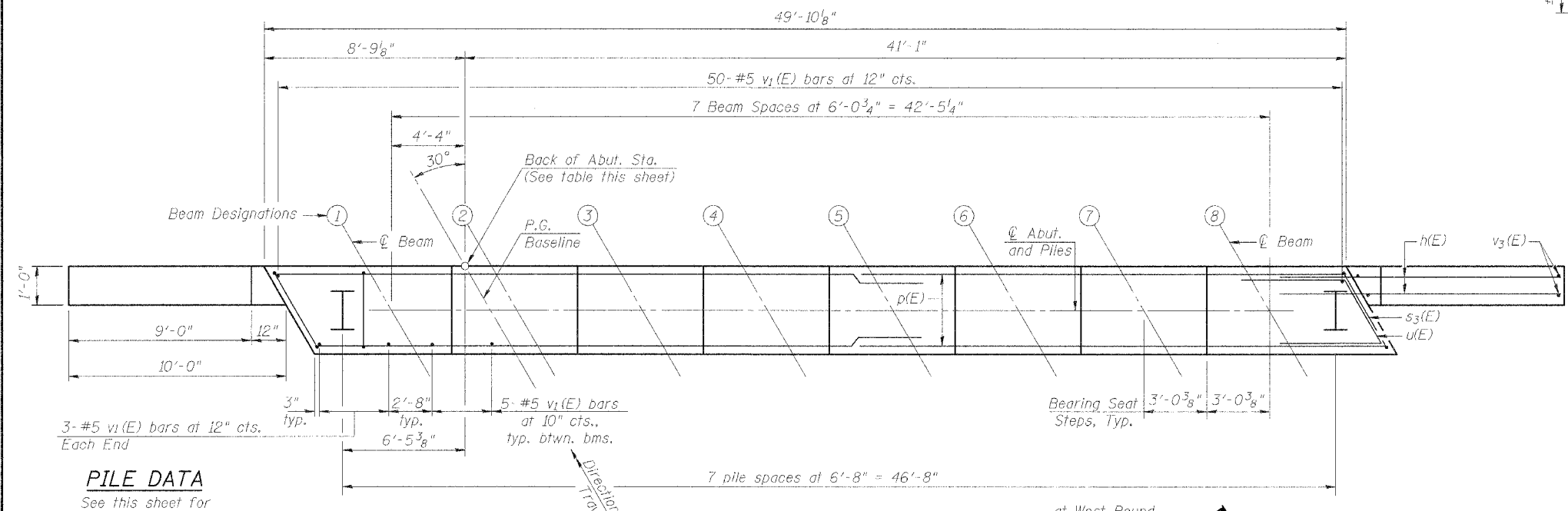
ROUTE NO.	SECTION	COUNTY	DATE	SHEET NO.
F.A.P. 315	55-2	MCDONOUGH	1025	470
SHEET NO. 14		22 SHEETS		

Notes:
1.) Pour steps monolithically with cap.
2.) Reinforcement bars designated (E) shall be epoxy coated.
3.) Bars indicated thus: 16 x 2-#7 etc. indicates 16 lines of bars with 2 lengths per line.

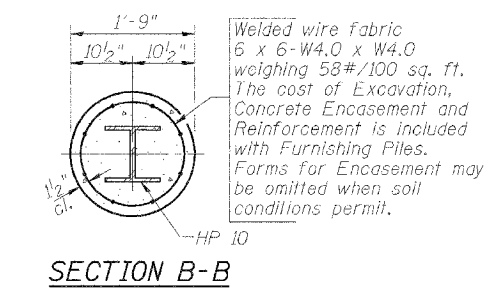


SECTION A-A
ABUTMENT ELEVATIONS & DIMENSIONS

Location	W.B., W. Abut.		E.B., E. Abut.	
	N. Wing	S. Wing	N. Wing	S. Wing
Bk. of Abut. Sta. on P.G. @	153+65.99		155+50.66	
(A) Bottom of Abut. Elev., Level	692.26		693.25	
(B) Top of Wing Wall Elev.	701.25	701.14	702.33	702.15
(C) Wing Wall Height	8'-11 7/8"	8'-10 1/2"	9'-1"	8'-10 3/4"



CONCRETE ENCASUREMENT DETAIL



BILL OF MATERIAL
(Two Abutments)

Bar No.	Size	Length	Shape
h(E)	#6	13'-5"	—
p(E)	#7	27'-2"	—
p ₁ (E)	#7	5'-8"	—
p ₃ (E)	#7	17'-10"	—
s ₃ (E)	#4	12'-1"	□
s ₄ (E)	#4	11'-5"	□
s ₅ (E)	#4	5'-2"	□
u(E)	#6	9'-7"	—
v ₁ (E)	#5	4'-4"	—
v ₃ (E)	#5	12'-8"	—
Concrete Structures	Cu. Yd.	46.8	
Reinforcement Bars, Epoxy Coated	Pound	8,180	
* Structure Excavation	Cu. Yd.	283	
Furnishing Steel Piles HP 10 x 57	Foot	1,183	
Driving Steel Piles	Foot	1,183	
Test Piles, HP 10 x 57	Each	2	

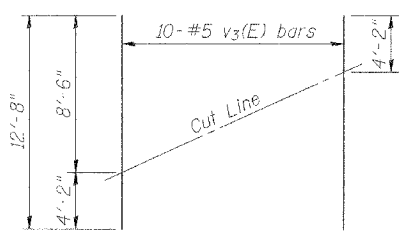
* Estimated Structure Excavation quantity is identical for all abutments.

PILE DATA
See this sheet for Pile Encasement Detail.

Type:	HP 10x57
Capacity:	Driven to Refusal
Number Required:	7 (+ 1 test pile)
Estimated Length:	
E.B., E. Abut.	93'
W.B., W. Abut.	76'

BEARING SEATS

Beam	W.B., W. Abutment		E.B., E. Abutment	
	Elevation	Step Ht.	Elevation	Step Ht.
①	695.76	1 5/8"	696.92	1 1/8"
②	695.89	1 3/8"	697.01	7/8"
③	696.00	1 1/4"	697.08	7/8"
④	696.10	1 1/8"	697.15	1"
⑤	696.01	0"	697.07	1 1/8"
⑥	696.01	7/8"	696.98	1 3/8"
⑦	695.94	1 1/8"	696.87	1 1/2"
⑧	695.85	1 1/8"	696.75	1 1/2"



FIELD CUTTING DIAGRAM

BARS s₅(E)

BARS s₄(E) & s₃(E)

BAR u(E)

DESIGNED	PJL
CHECKED	LLV
DRAWN	MGM
CHECKED	PJL

ABUTMENT DETAILS
IL. ROUTE 336 OVER
BURLINGTON NORTHERN
SANTA FE RAILROAD
F.A.P. ROUTE 315 SECT. 55-2
MCDONOUGH COUNTY
STATION 154+56.74
STRUCTURE NO. 055-0052 (EB)
STRUCTURE NO. 055-0053 (WB)

STS CONSULTANTS
111 N. Jefferson Ave.
Peoria, Illinois 61602
Ph (309) 676-8464
FAX (309) 676-5445
IL Design Firm Reg. No. 184-001518