

- Notes:
 1.) Space Reinforcement in cap to miss piles and anchor bolts.
 2.) Pour steps monolithically with cap.
 3.) Min. laps: #6 bar 3'-7", #7 bar 4'-10"
 4.) Bars indicated thus: 16 x 2-#7 etc. indicates 16 lines of bars with 2 lengths per line.

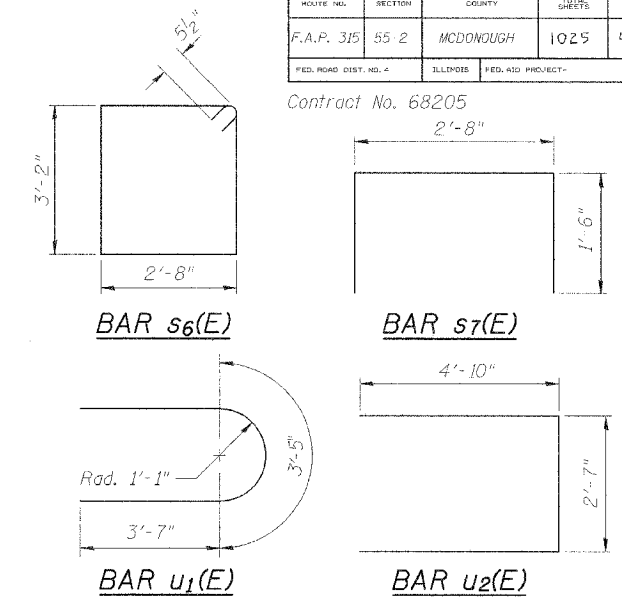
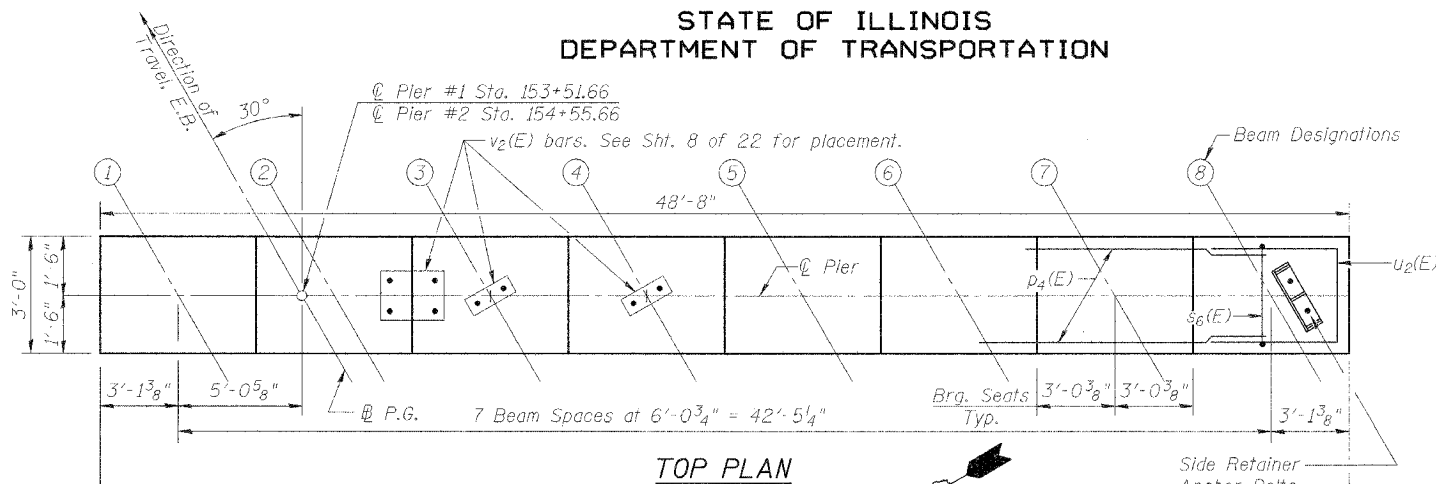
STATE OF ILLINOIS
 DEPARTMENT OF TRANSPORTATION

ROUTE NO.	SECTION	COUNTY	SHEET NO.	SHEET	SHEET NO.
F.A.P. 315	55-2	MCDONOUGH	1025	471	22 SHEETS
FED. ROAD DIST. NO. 4	ILLINOIS	FED. AID PROJECT			

Contract No. 68205

BEARING SEATS

Beam	Pier #1		Pier #2	
	Elevation	Step Ht.	Elevation	Step Ht.
①	695.66	1"	696.45	1 1/8"
②	695.74	0"	696.54	3/4"
③	695.74	1 3/8"	696.60	3/4"
④	695.85	1 1/8"	696.66	1"
⑤	695.76	1 3/8"	696.58	1 1/4"
⑥	695.65	1 5/8"	696.48	1 1/2"
⑦	695.52	1 3/4"	696.36	1 5/8"
⑧	695.38	1 3/4"	696.23	1 5/8"



PIER ELEVATIONS & DIMENSIONS

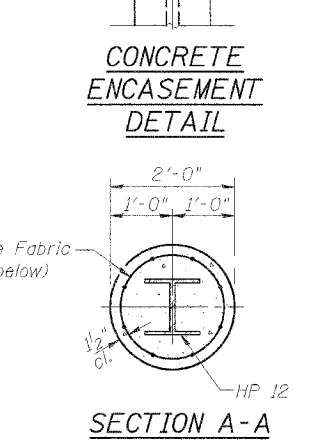
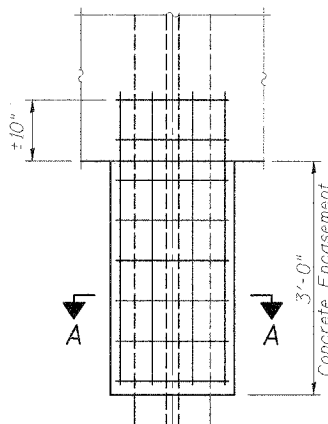
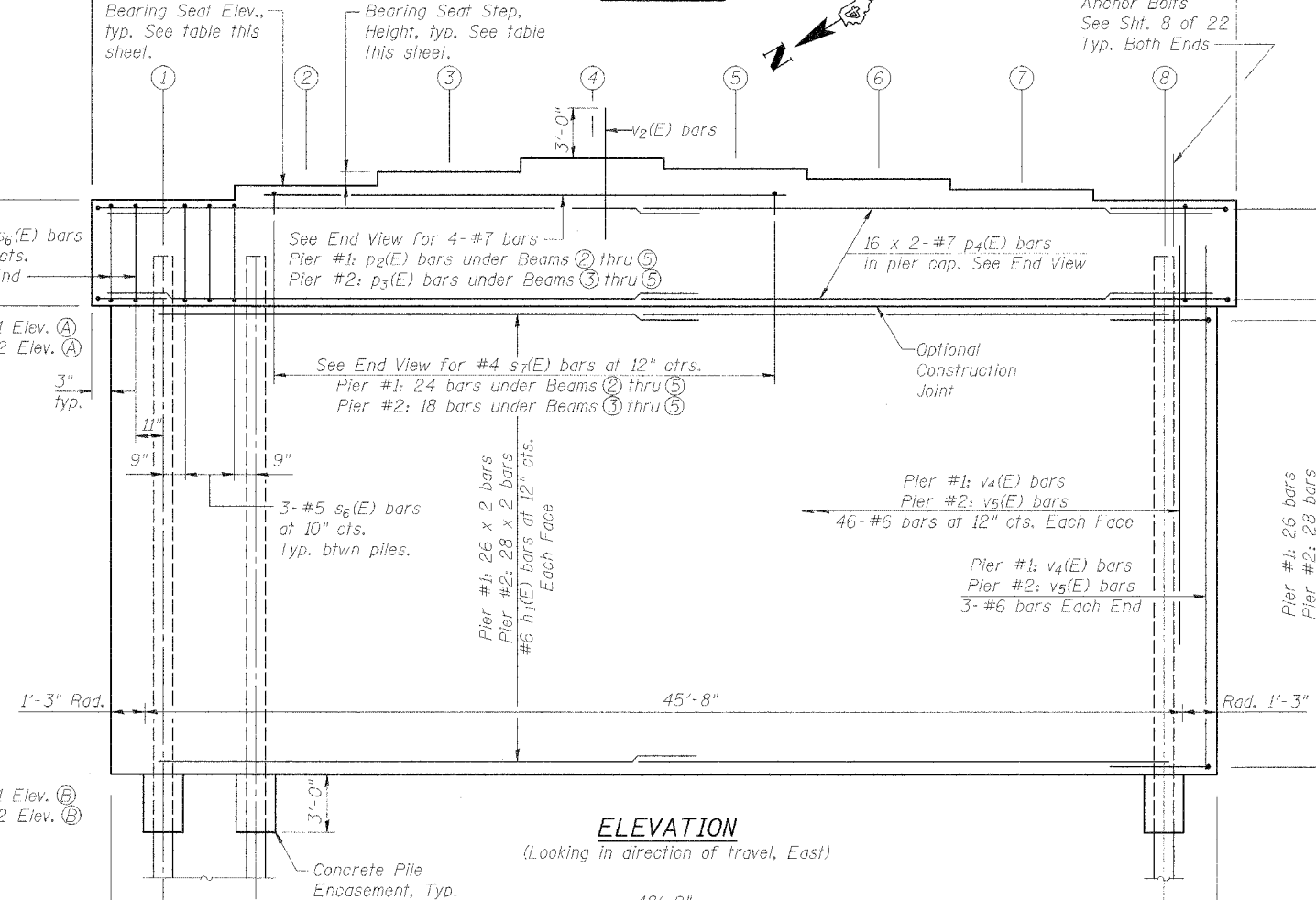
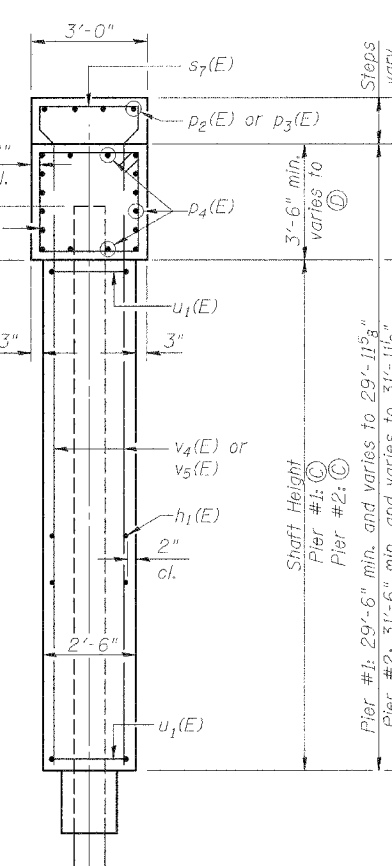
Location	Pier #1	Pier #2
(A) Bottom of Cap Elev.	691.88	692.73
(B) Bottom of Pier Shaft Elev.	665.88	664.73
(C) Pier Shaft Height	26'-0"	28'-0"
(D) Pier Cap Max Height	3'-11 5/8"	3'-11 1/8"
** Structure Excavation	136 cu. yd.	125 cu. yd.

BILL OF MATERIAL

(Two Piers)

Bar	No.	Size	Length	Shape
h1(E)	216	#6	24'-8"	—
p2(E)	4	#7	23'-10"	—
p3(E)	4	#7	17'-10"	—
p4(E)	64	#7	26'-7"	—
s6(E)	92	#5	12'-8"	□
s7(E)	42	#4	5'-8"	□
u1(E)	108	#6	10'-7"	—
u2(E)	24	#7	12'-3"	—
v2(E)	84	#8	6'-0"	—
v4(E)	98	#6	28'-0"	—
v5(E)	98	#6	30'-0"	—
Concrete Structures		Cu. Yd.	278.9	
Reinforcement Bars, Epoxy Coated		Pound	25,400	
** Structure Excavation		Cu. Yd.	261	
Furnishing Steel Piles		Foot	2,545	
HP 12 x 63		Foot	2,545	
Driving Steel Piles		Foot	2,545	
Test Piles, HP 12 x 63		Each	1	

PIER DETAILS (EB)
 IL. ROUTE 336 OVER
 BURLINGTON NORTHERN
 SANTA FE RAILROAD
 F.A.P. ROUTE 315 SECT. 55-2
 MCDONOUGH COUNTY
 STATION 154+56.74
 STRUCTURE NO. 055-0052 (EB)



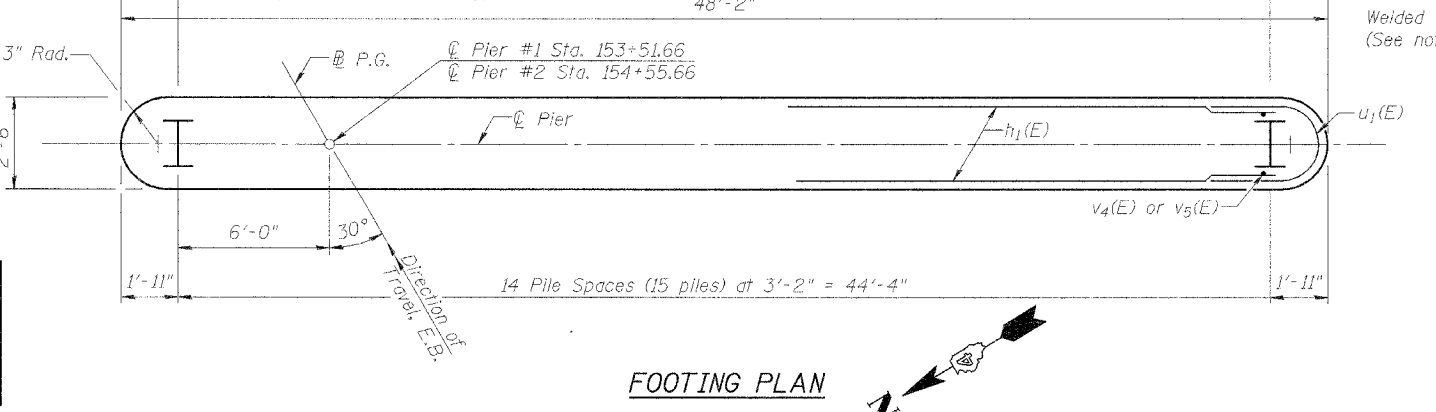
Note:
 Welded wire fabric 6 x 6-W4.0 x W4.0 weighing 58#/100 sq. ft. The cost of Excavation, Concrete Encasement and Reinforcement is included with Furnishing Piles. Forms for Encasement may be omitted when soil conditions permit.

PILE DATA

See this sheet for Pile Encasement Detail.

Type:	HP 12 x 63	
Capacity:	Driven to Refusal	
Location	No. of Piles	Est. Length
Pier #1	14 (+1 test pile)	80'
Pier #2	15	95'

DESIGNED	P.J.L.
CHECKED	LLV
DRAWN	MGM
CHECKED	P.J.L.



STS CONSULTANTS
 111 NE Jefferson Ave.
 Peoria, Illinois 61602
 Ph(309)676-8464
 FAX(309)676-5445
 IL Design Firm Reg. No. 184-001518