

STATE OF ILLINOIS
DEPARTMENT OF TRANSPORTATION

ROUTE NO.	SECTION	COUNTY	TOTAL SHEETS	SHEET NO.
F.A.P. 315	55-2	MCDONOUGH	1025	472
FED. ROAD DIST. NO. 4	T.L.D.M.S.	FED. AID PROJECT		

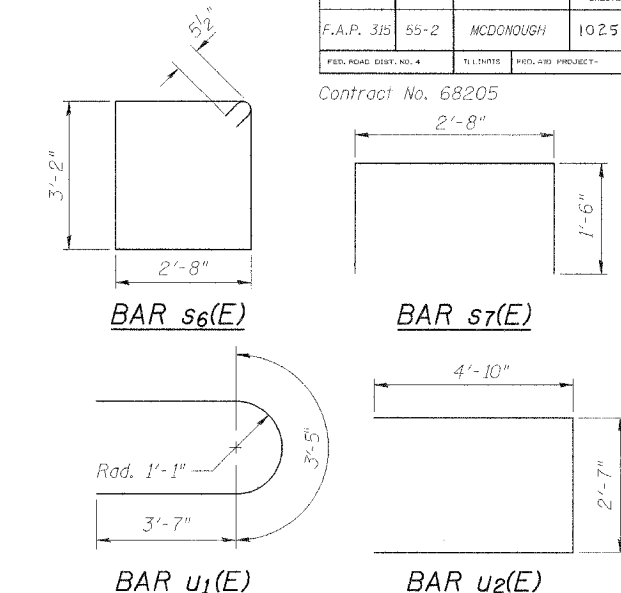
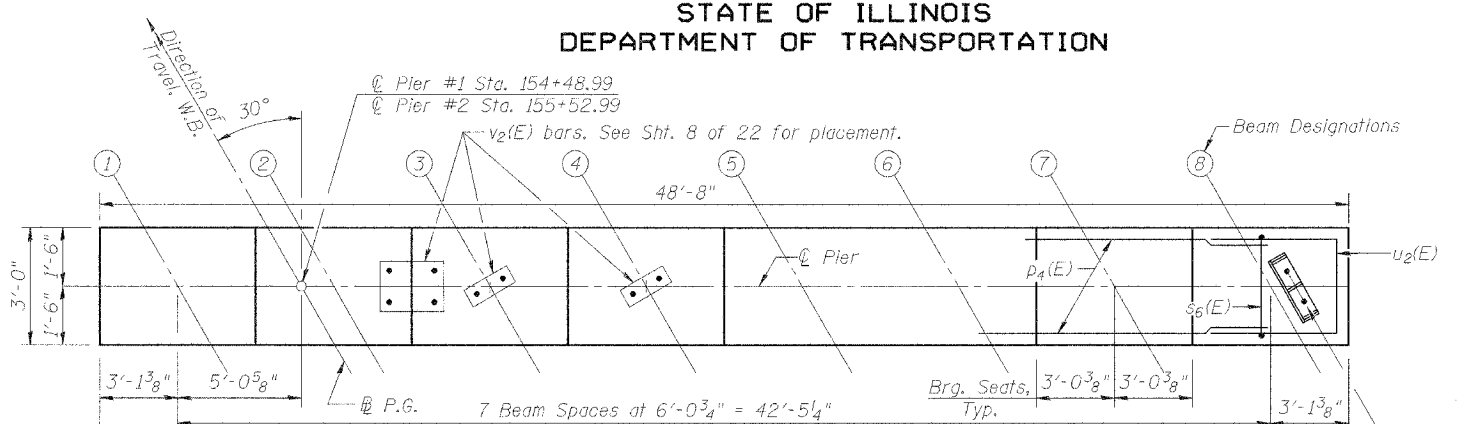
SHEET NO. 16
22 SHEETS

Contract No. 68205

- Notes:
1.) Space Reinforcement in cap to miss piles and anchor bolts.
2.) Pour steps monolithically with cap.
3.) Min. laps: #6 bar 3'-7", #7 bar 4'-10"
4.) Bars indicated thus: 16 x 2-#7 etc. indicates 16 lines of bars with 2 lengths per line.

BEARING SEATS

Beam	Pier #1		Pier #2	
	Elevation	Step Ht.	Elevation	Step Ht.
①	696.37	1 1/2"	696.91	1 1/2"
②	696.50	1 1/4"	697.03	1 1/8"
③	696.60	1 1/4"	697.12	1 1/8"
④	696.70	1 3/8"	697.21	1 1/2"
⑤	696.59	0"	697.09	0"
⑥	696.59	7/8"	697.09	1 1/8"
⑦	696.52		697.00	
⑧	696.42	1 1/4"	696.90	1 1/4"



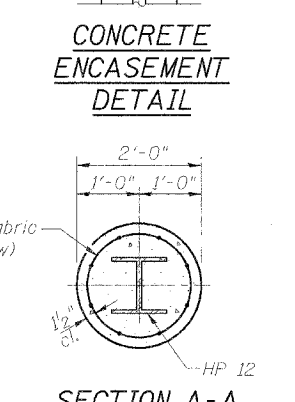
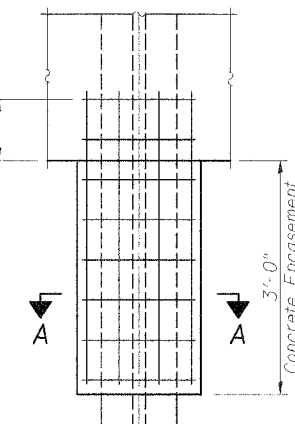
PIER ELEVATIONS & DIMENSIONS

Location	Pier #1	Pier #2
(A) Bottom of Cap Elev.	692.87	693.40
(B) Bottom of Pier Shaft Elev.	666.87	665.40
(C) Pier Shaft Height	26'-0"	28'-0"
(D) Pier Cap Max Height	3'-10"	3'-9 3/4"
** Structure Excavation	133 cu. yd.	127 cu. yd.

BILL OF MATERIAL

(Two Piers)

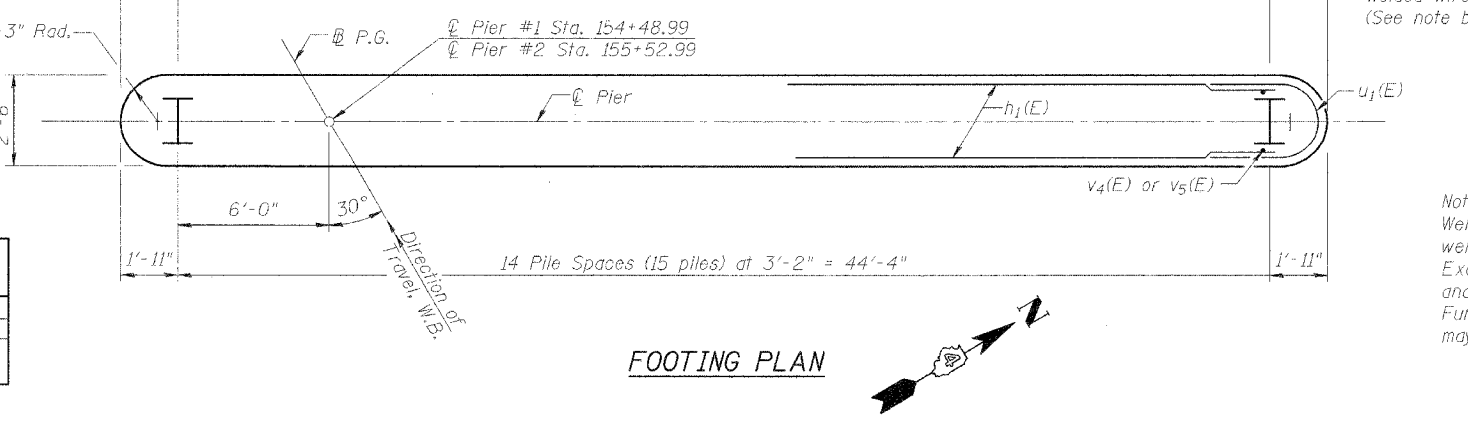
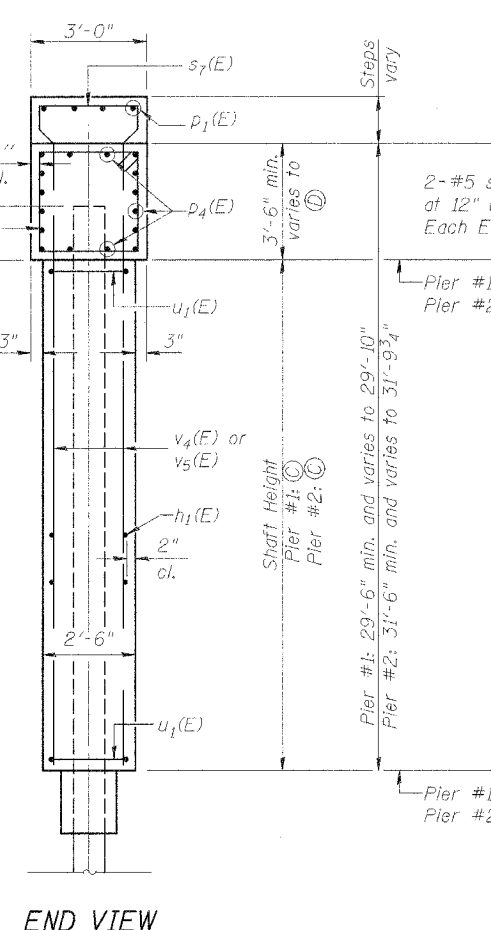
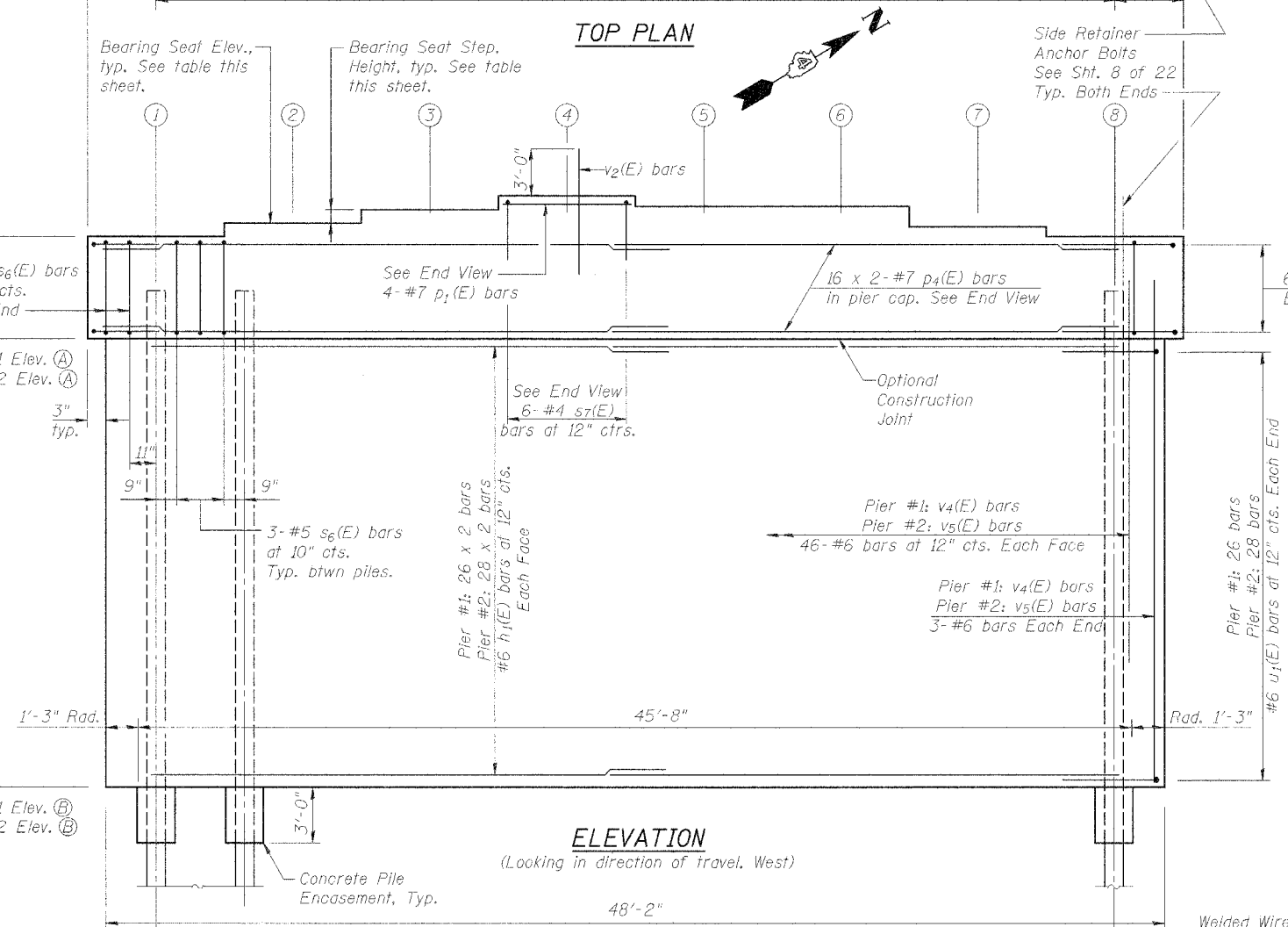
Bar	No.	Size	Length	Shape
h1(E)	216	#6	24'-8"	
p1(E)	8	#7	5'-8"	
p4(E)	64	#7	26'-7"	
s6(E)	92	#5	12'-8"	
s7(E)	12	#4	5'-8"	
u1(E)	108	#6	10'-7"	
u2(E)	24	#7	12'-3"	
v2(E)	84	#8	6'-0"	
v4(E)	98	#6	28'-0"	
v5(E)	98	#6	30'-0"	
Concrete Structures		Cu. Yd.	277.7	
Reinforcement Bars, Epoxy Coated		Pound	25,030	
** Structure Excavation		Cu. Yd.	260	
Furnishing Steel Piles		Foot	2,680	
HP 12 x 63				
Driving Steel Piles		Foot	2,680	
Test Piles, HP 12 x 63		Each	1	



Note:
Welded wire fabric 6 x 6-W4.0 x W4.0 weighing 58#/100 sq. ft. The cost of Excavation, Concrete Encasement and Reinforcement is included with Furnishing Piles. Forms for Encasement may be omitted when soil conditions permit.

PIER DETAILS (WB)
IL. ROUTE 336 OVER
BURLINGTON NORTHERN
SANTA FE RAILROAD
F.A.P. ROUTE 315 SECT. 55-2
MCDONOUGH COUNTY
STATION 154+56.74
STRUCTURE NO. 055-0053 (WB)

STS CONSULTANTS
111 NE Jefferson Ave.
Peoria, Illinois 61602
Ph (309) 676-8464
FAX (309) 676-8445
IL Design Firm Reg. No. 184-001518



PILE DATA

See this sheet for Pile Encasement Detail.

Type:	HP 12x63	
Capacity:	Driven to Refusal	
Location	No. of Piles	Est. Length
Pier #1	15	90'
Pier #2	14 (+1 test pile)	95'

DESIGNED	PJL
CHECKED	LLV
DRAWN	MGM
CHECKED	PJL

9/26/2005 8:25:00 AM