

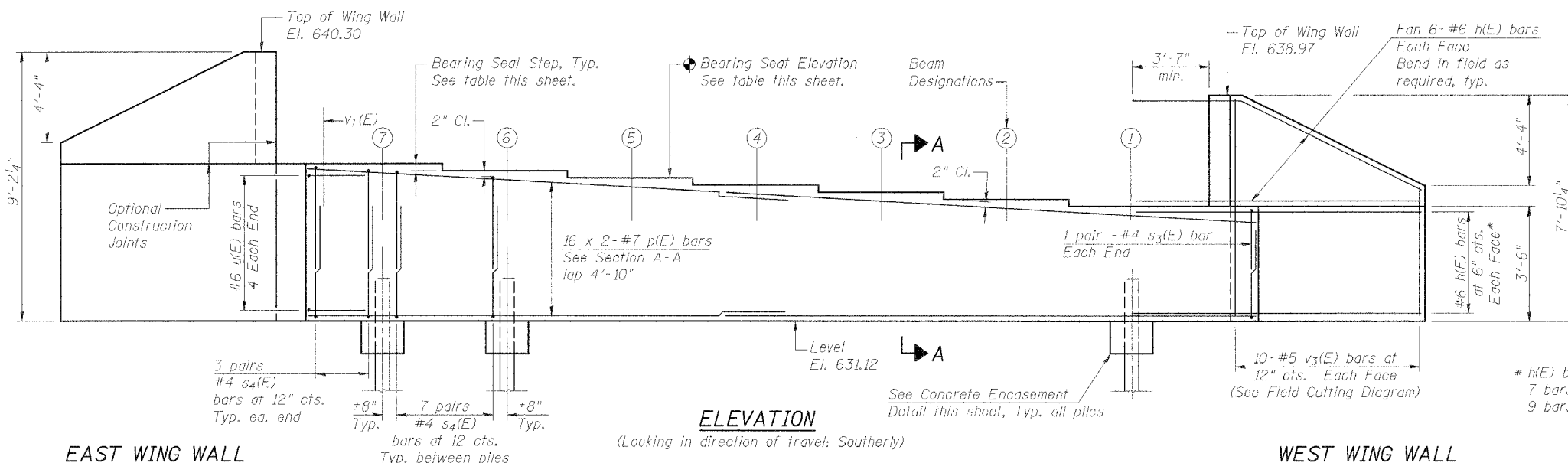
Notes:

- 1.) Pour steps monolithically with cap.
- 2.) Reinforcement bars designated (E) shall be epoxy coated.
- 3.) Bars indicated thus: 16 x 2-#7 etc. indicates 16 lines of bars with 2 lengths per line.
- 4.) Chamfer exposed edges $\frac{3}{4}$ "

STATE OF ILLINOIS
DEPARTMENT OF TRANSPORTATION

ROUTE NO.	SECTION	COUNTY	TOTAL SHEETS	SHEET NO.	SHEET NO. 13 22 SHEETS
F.A.P. 315	55-2	MCDONOUGH	1025	491	
FED. ROAD DIST. NO.	ILLINOIS	FED. AID PROJECT			

Contract No. 68205

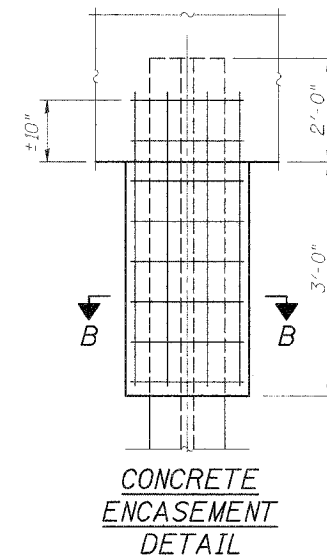


EAST WING WALL

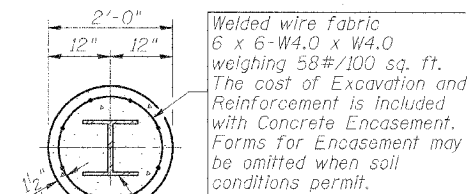
WEST WING WALL

ELEVATION

(Looking in direction of travel: Southerly)



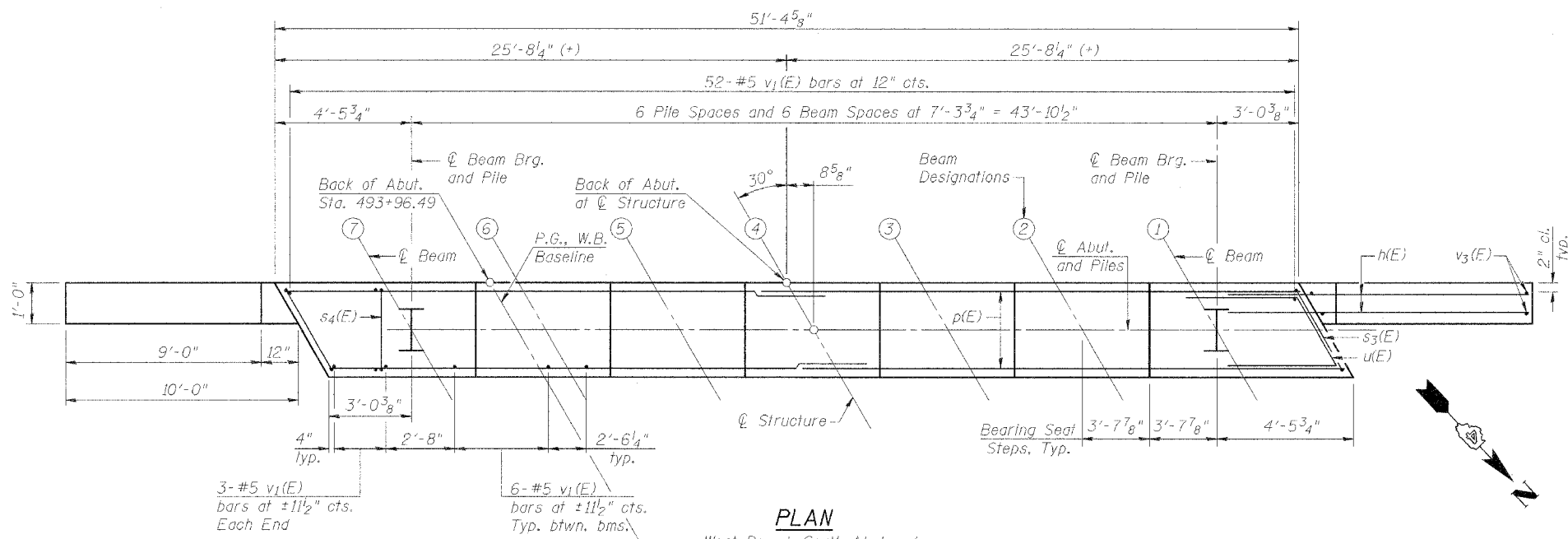
CONCRETE ENCASUREMENT DETAIL



SECTION B-B

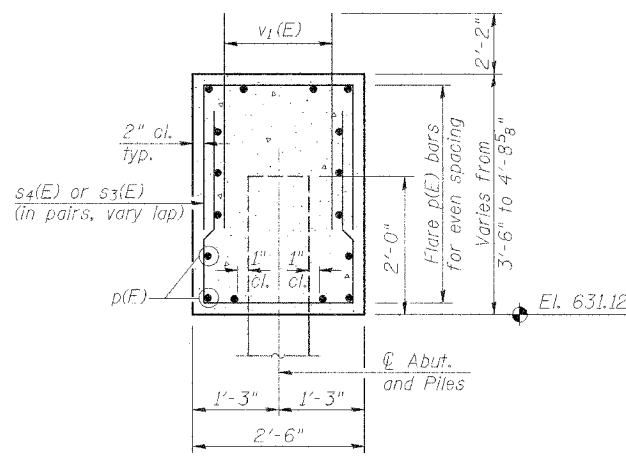
BILL OF MATERIAL

Bar	No.	Size	Length	Shape
h(E)	56	#6	13'-5"	—
p(E)	32	#7	28'-0"	—
s ₃ (E)	4	#4	8'-10"	U
s ₄ (E)	96	#4	8'-6"	U
u(E)	8	#6	9'-7"	—
v ₁ (E)	94	#5	4'-4"	—
v ₃ (E)	20	#5	11'-11"	—
Concrete Structures			Cu. Yd.	24.3
Reinforcement Bars, Epoxy Coated			Pound	4,320
Structure Excavation			Cu. Yd.	138
Furnishing Steel Piles				
HP 12 x 53			Foot	294
Driving Steel Piles			Foot	294
Test Piles, HP 12 x 53			Each	1
Concrete Encasement			Cu. Yd.	2.4



PLAN

West Bound, South Abutment



SECTION A-A

Note: #4 bar min. lap = 1'-8"

BEARING SEATS

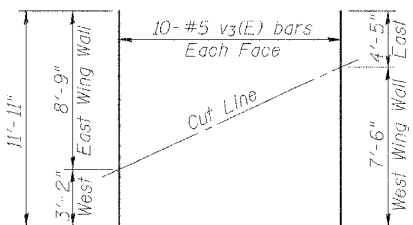
Beam	Elevation	Step Ht.
①	634.62	2 1/2"
②	634.82	2 3/8"
③	635.02	2 1/2"
④	635.23	2 3/8"
⑤	635.43	2 3/8"
⑥	635.64	2 1/2"
⑦	635.84	2 3/8"

PILE DATA

See this sheet for Pile Encasement Detail.

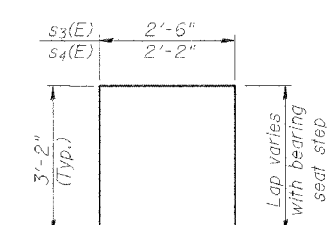
Type: HP 12 x 53
Capacity: Driven to Refusal
Number Required: 6 (+1 test pile)
Estimated Length: 49'

DESIGNED	PJL
CHECKED	LLV
DRAWN	MGM
CHECKED	PJL



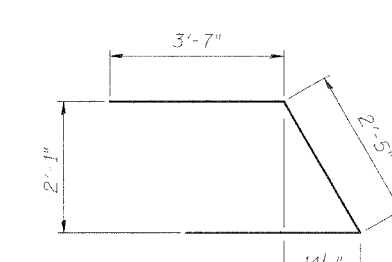
FIELD CUTTING DIAGRAM

Order v₃(E) full length. Cut as shown and use remainder of bars in opposite wing wall.



BARS s₃(E) & s₄(E)

(Used in pairs with variable lap)



BAR u(E)

SOUTH ABUTMENT DETAILS (WB)
IL. ROUTE 336 OVER
TRIBUTARY TO
KILLJORDAN CREEK
F.A.P. ROUTE 315 SECT. 55-2
MCDONOUGH COUNTY
STATION 494+75.00
STRUCTURE NO. 055-0061 (WB)

STS CONSULTANTS
111 NE Jefferson Ave.
Peoria, Illinois 61602
Ph (309) 676-8464
FAX (309) 676-5445
IL Design Firm Reg. No. 184-001518