

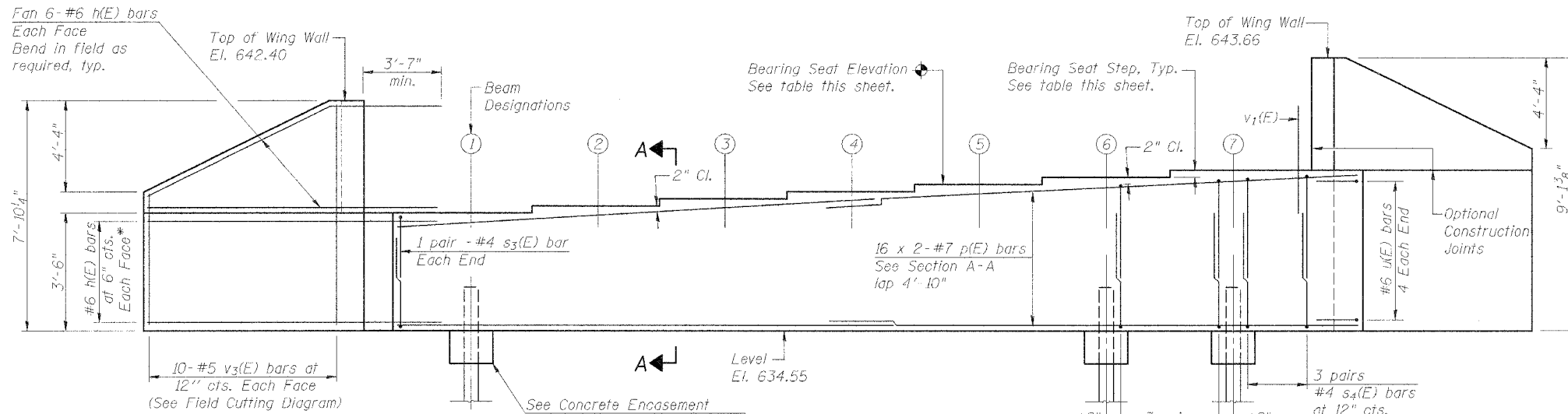
STATE OF ILLINOIS  
DEPARTMENT OF TRANSPORTATION

ROUTE NO.	SECTION	COUNTY	TOTAL SHEETS	SHEET NO.
F.A.P. 315	55-2	MCDONOUGH	1025	493
FED. ROAD DIST. NO. 4	SUBURBS	FED. AID PROJECT-		

SHEET NO. 15  
22 SHEETS

Contract No. 68205

- Notes:  
1.) Pour steps monolithically with cap.  
2.) Reinforcement bars designated (E) shall be epoxy coated.  
3.) Bars indicated thus: 16 x 2-#7 etc. indicates 16 lines of bars with 2 lengths per line.  
4.) Chamfer exposed edges 3/4".

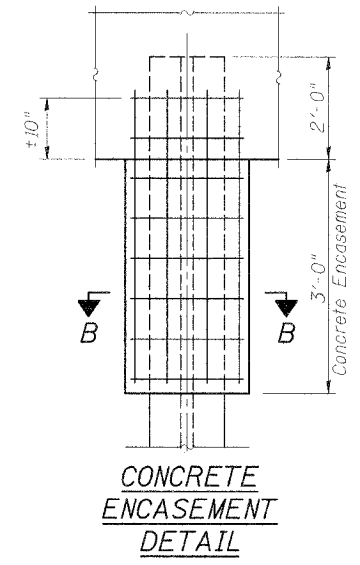


\*h(E) bars:  
7 bars in West Wing Wall  
9 bars in East Wing Wall

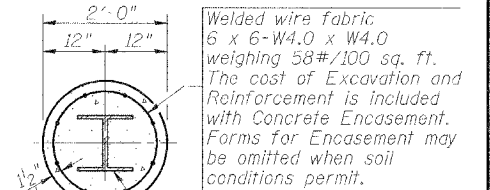
WEST WING WALL

ELEVATION  
(Looking opposite to direction of travel: Northerly)

EAST WING WALL



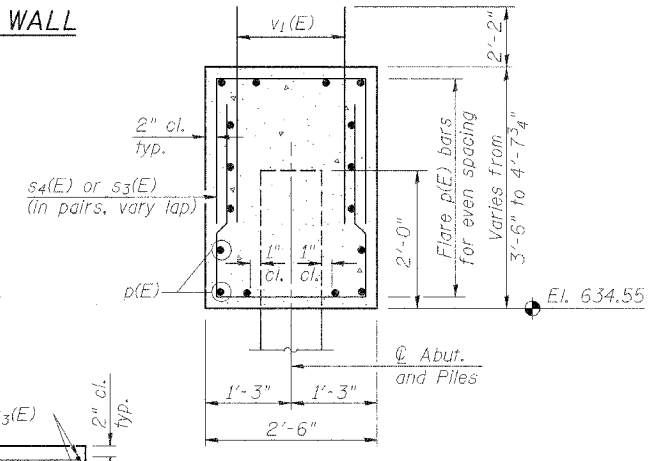
CONCRETE  
ENCASEMENT  
DETAIL



SECTION B-B

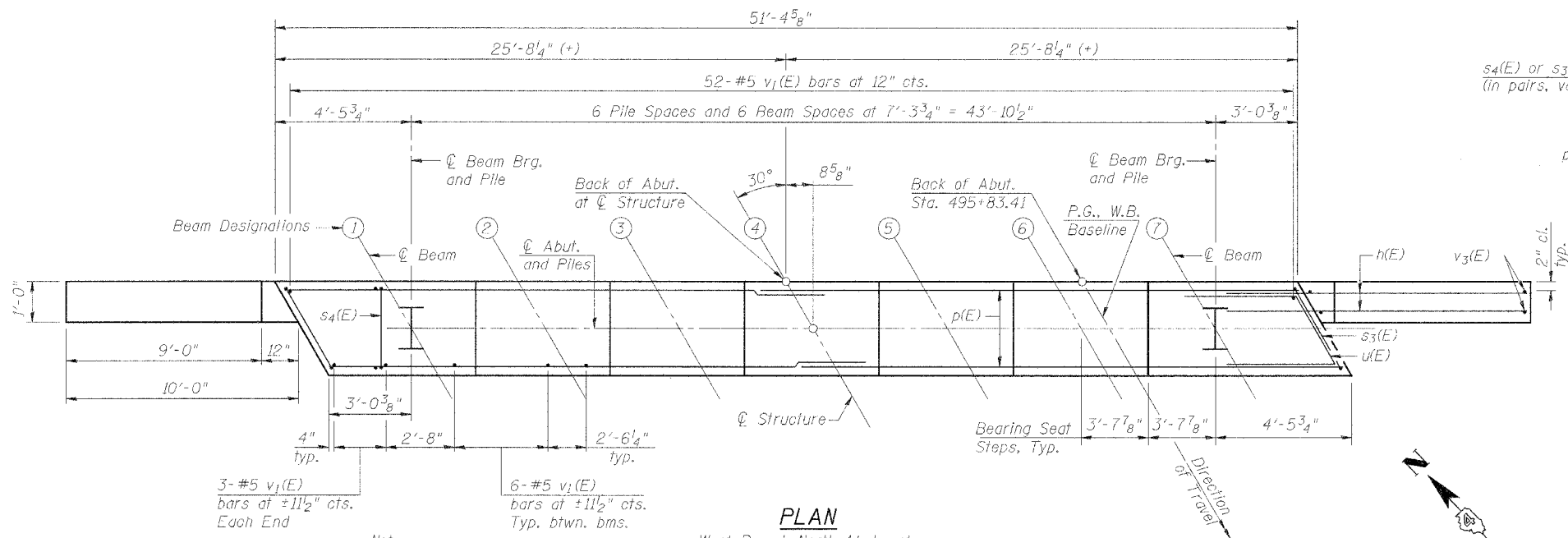
BILL OF MATERIAL

Bar No.	Size	Length	Shape
h(E)	#6	13'-5"	—
p(E)	#7	28'-0"	—
s3(E)	#4	8'-10"	□
s4(E)	#4	8'-6"	□
u(E)	#6	9'-7"	—
v1(E)	#5	4'-4"	—
v3(E)	#5	11'-11"	—
Concrete Structures		Cu. Yd.	24.0
Reinforcement Bars, Epoxy Coated		Pound	4,320
Structure Excavation		Cu. Yd.	138
Furnishing Steel Piles HP 12 x 53		Foot	312
Driving Steel Piles		Foot	312
Test Piles, HP 12 x 53		Each	1
Concrete Encasement		Cu. Yd.	2.4



SECTION A-A

Note: #4 bar min. lap = 1'-8"



PLAN

West Bound, North Abutment

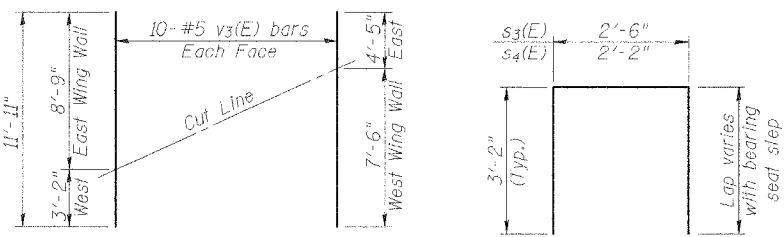
BEARING SEATS

Beam	Elevation	Step Ht.
①	638.05	2 1/4"
②	638.24	2 1/4"
③	638.43	2 1/4"
④	638.62	2 1/4"
⑤	638.81	2 3/8"
⑥	639.01	2 3/8"
⑦	639.20	2 3/8"

PILE DATA

See this sheet for Pile Encasement Detail.

Type: HP 12 x 53  
Capacity: Driven to Refusal  
Number Required: 6 (+1 test pile)  
Estimated Length: 52'



FIELD CUTTING DIAGRAM

Order v3(E) full length. Cut as shown and use remainder of bars in opposite wing wall.

BARS s3(E) & s4(E)

(Used in pairs with variable lap)

BAR u(E)

DESIGNED	PJL
CHECKED	LLV
DRAWN	MGM
CHECKED	PJL

NORTH ABUTMENT DETAILS (WB)  
IL. ROUTE 336 OVER  
TRIBUTARY TO  
KILLJORDAN CREEK  
F.A.P. ROUTE 315 SECT. 55-2  
MCDONOUGH COUNTY  
STATION 494+75.00  
STRUCTURE NO. 055-0061 (WB)

**STS CONSULTANTS**  
111 NE Jefferson Ave.  
Peoria, Illinois 61602  
Ph (309) 676-8464  
FAX (309) 676-5445  
IL Design Firm Reg. No. 184-001518