

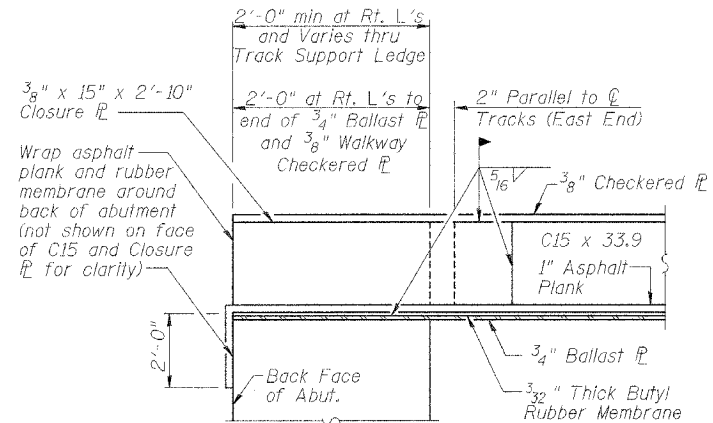
STATE OF ILLINOIS
DEPARTMENT OF TRANSPORTATION

ROUTE NO.	SECTION	COUNTY	DATE	SHEET	SHEET NO. 3
F.A.P. 315	55-2	McDONOUGH	1025	503	16 SHEETS
FED. ROAD DIST. NO. 4	ILLINOIS	FED. AID PROJECT			

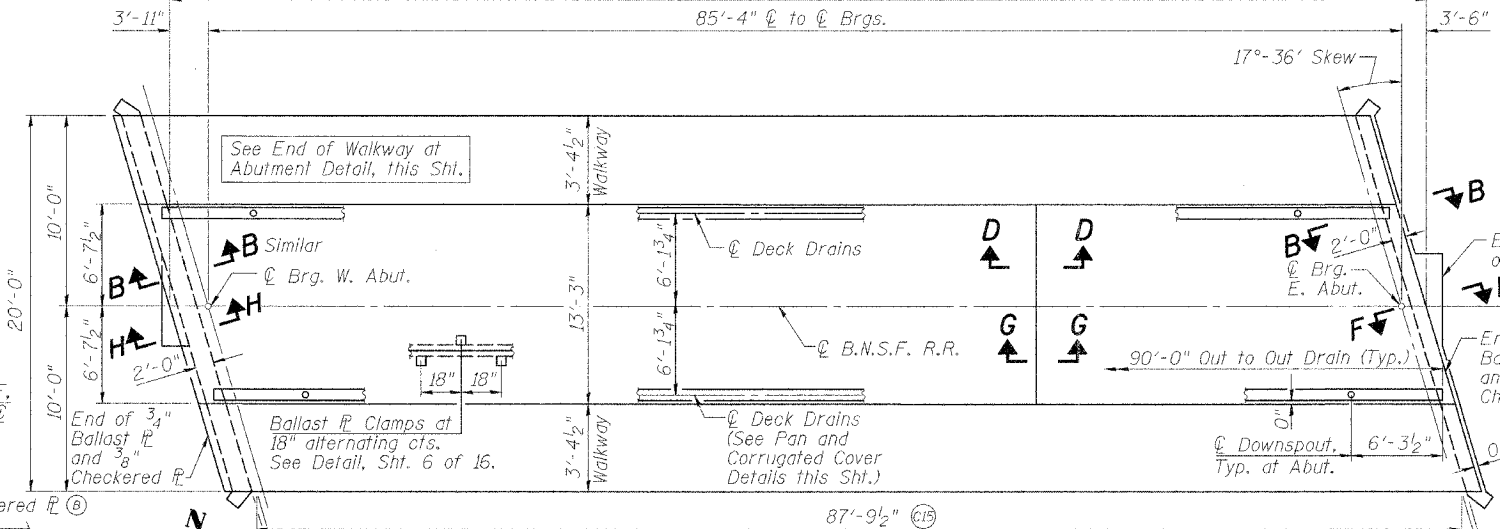
92'-9" Ballast Plate and Walkway Checkered Plate
85'-4" to ϕ Brgs.

$\frac{1}{2}$ " x 1'-10" x 3'-5 $\frac{1}{2}$ " Skewed Masonry Plate beneath both Walkways at W. Abut., attached to Top of Abutment using 6 - 7/8" x 9" Anchor Bolts in an 8" x 12" Pattern, similar to Masonry Plate below Ballast Plate. See Section H-H for Additional Details.

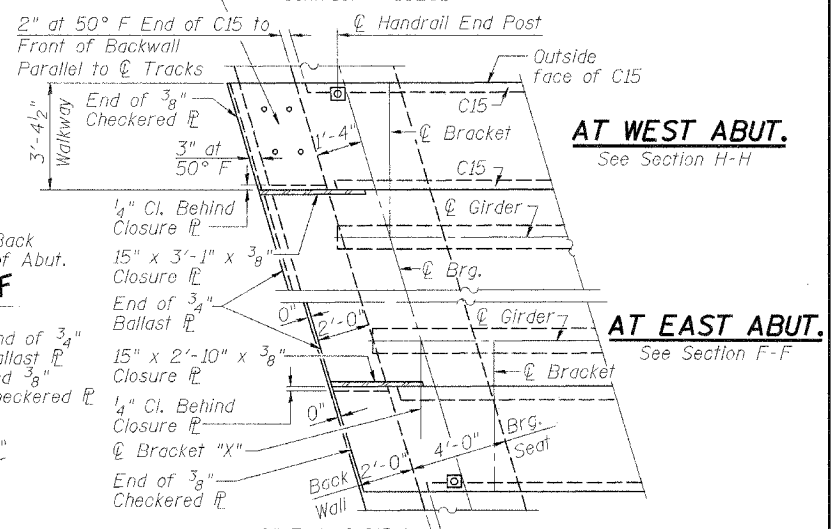
Contract # 68205



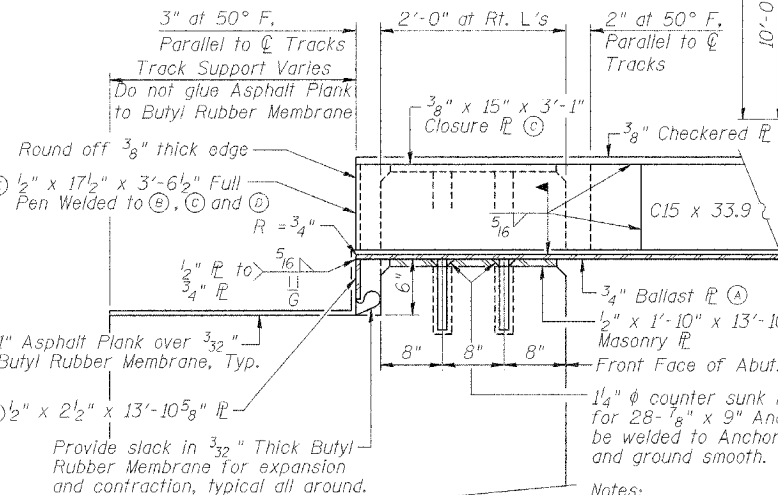
SECTION F-F
At East Abutment



DECK PLAN
(Showing Deck Drainage System)

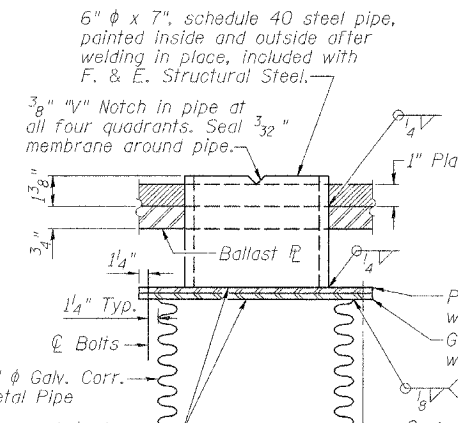


END OF WALKWAY AT ABUTMENT DETAIL



SECTION H-H
At West Abutment

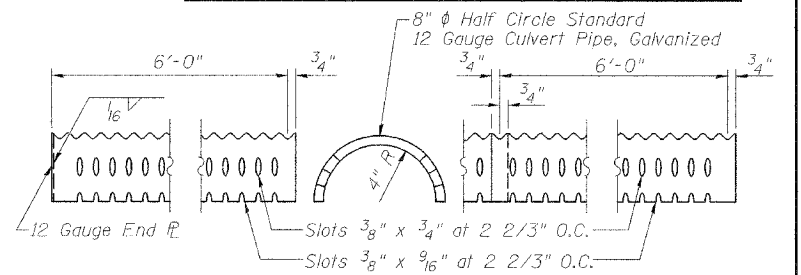
Notes:
1. Deck Expansion Joint at West Abutment.
2. Shown thru track support, similar elsewhere.
Wrap membrane and asphalt plank 2'-0" around back of abutment.



DETAIL G

NOTES

1. Cement butyl membrane along edges of ballast plate, but do not cement to ballast plate, except when spliced. Cement membrane to C15 x 33.9.
2. Furnishing and placing butyl membrane and asphalt planks are included in the item Membrane Waterproofing.
3. Work this sheet with Sht. 4 and 5 of 16.
4. See Notes Sht. 5 of 16 for steel requirements.

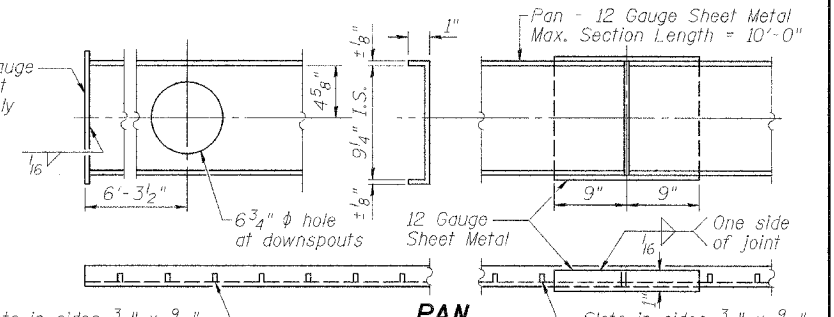


END SECTION

INTERIOR SECTION

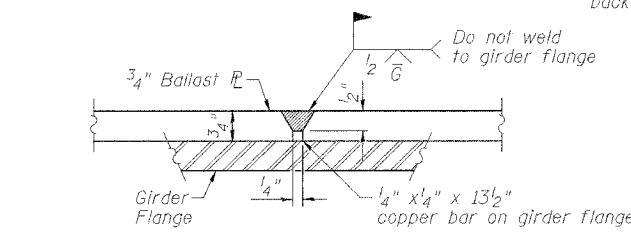
CORRUGATED COVER

Cost Included In "Ballast Drains"

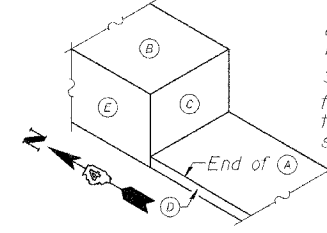


PAN

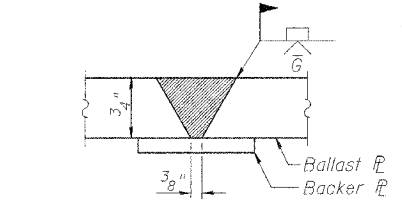
- 1.) Cost Included In "Ballast Drains" at 2 2/3" O.C.
- 2.) Galvanized



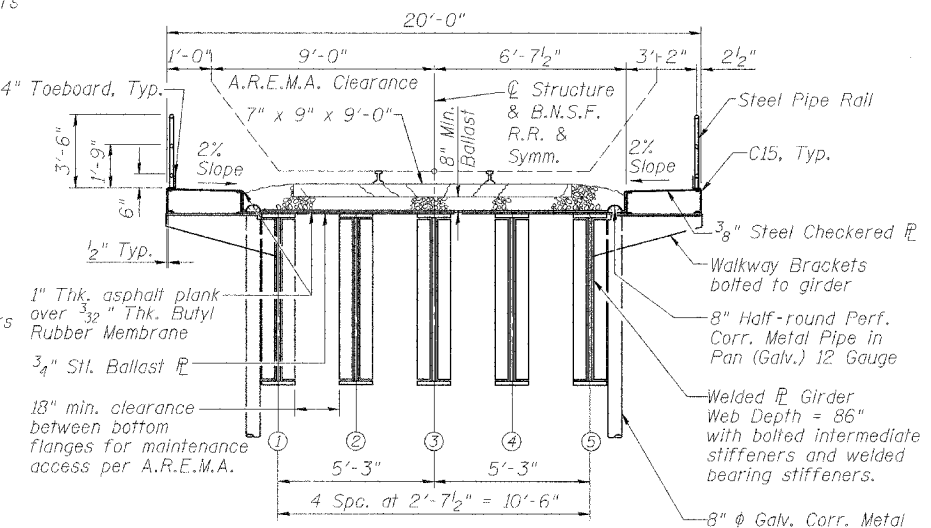
SECTION G-G
Ballast Weld at girders



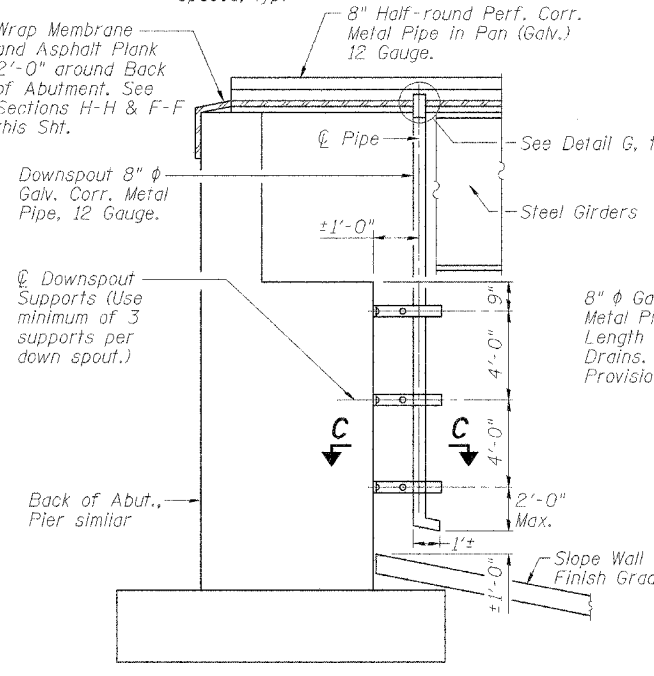
END DETAIL



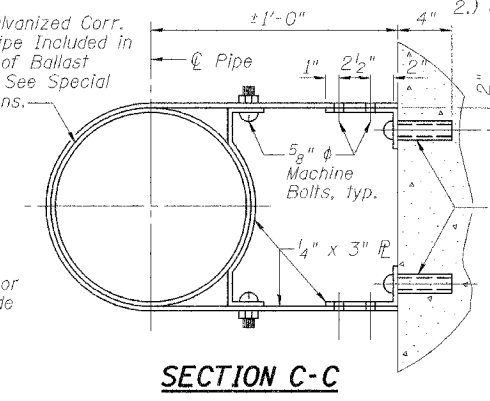
SECTION D-D
Transverse to Girder Span between girders



TYPICAL SECTION
(Looking Northeast)



SECTION B-B



SECTION C-C

Cost of Downspout Supports to be incidental to cost of "Ballast Drains".

DESIGNED	PJL
CHECKED	WDL
DRAWN	MGM
CHECKED	PJL

DECK DETAILS
BURLINGTON NORTHERN
SANTA FE RAILROAD OVER
RAMP I
F.A.P. ROUTE 315 SECT. 55-2
McDONOUGH COUNTY
STATION 21+61.48
STRUCTURE NO. 055-9902
B.N.S.F. LINE SEGMENT 0011
B.N.S.F. BRIDGE NO. 206.13

STS CONSULTANTS
111 NE Jefferson Ave.
Peoria, Illinois 61602
Ph (309) 676-8464
FAX (309) 676-5445
IL Design Firm Reg. No. 224-001522